

CARBON<sup>®</sup>  
CRAFT

MADE WITH UPCYCLED CARBON



“Pollution is nothing but the resources we are not harvesting. We allow them to disperse because we’ve been ignorant of their value.”

**- R. Buckminster Fuller**



# About Us

# WE BUILD PRODUCTS BY UPCYCLING CARBON

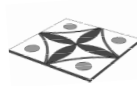
**Carbon Craft design** is a Goa based design and material innovation company started in 2016. We are a group of architects and engineers developing **carbon upcycled products** to mitigate air pollution at scale.



Air Pollution



Impact



Craft



Local Empowerment



# Our product

# CARBON TILE



One sqm of  
**Carbon Tile**



Prevents 15 min  
**of car pollution**





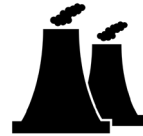


# DESIGN DIRECTION

The amalgamation of an evident character with a natural element associated with the city or industry.



**IDENTILE**  
SERIES



**INDUSTILE**  
SERIES



# IDENTILE SERIES

## STANDARD RANGE

IdenTile series is an expression of our coexistence with nature. The patterns are symbolic art form of contemporary taste with a modern twist for living space.

DELHI + Mughal



BEIJING + Mountains



LONDON + Water



NEW YORK + Central Park





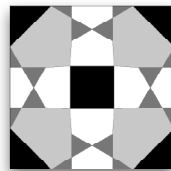
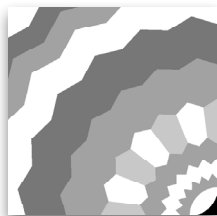
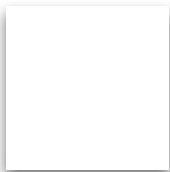
# DELHI

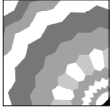
## TARA

---

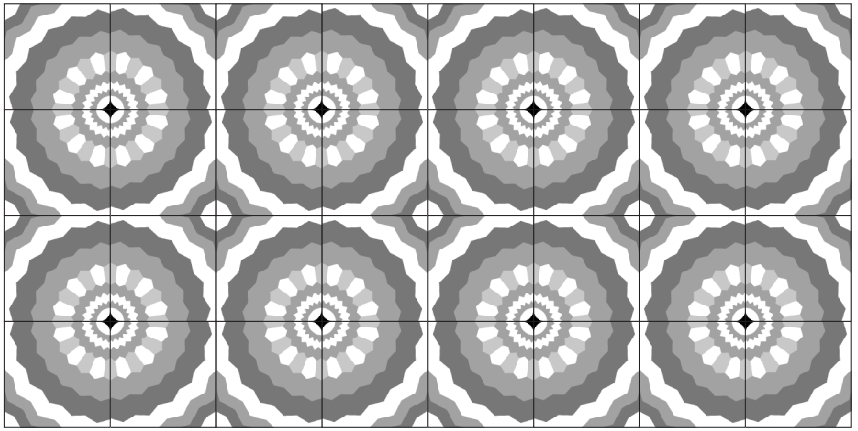


Domes that make you stop in wonder  
Endless arches that make you stay forever  
The Delhi that took our breath away

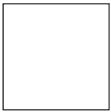
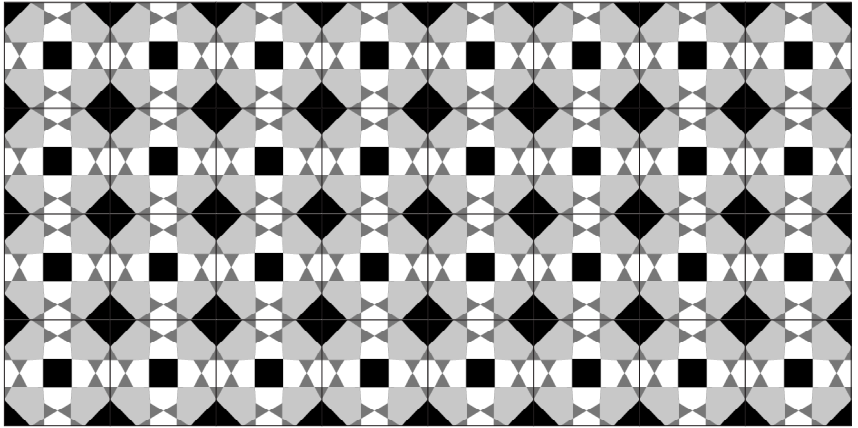




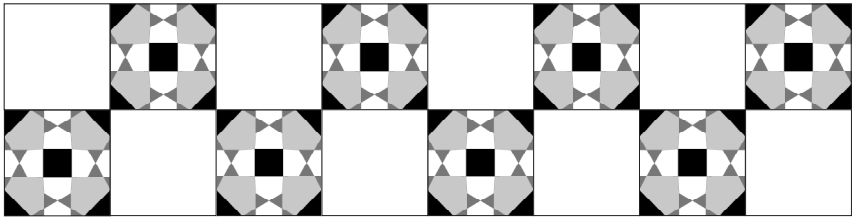
CC101



CC102



CC006



## Tile Specifications

**Thickness** - 20mm to 30mm

**Square**



300mmX300mm



250mmX250mm



200mmX200mm



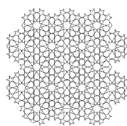




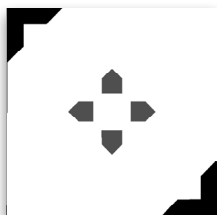
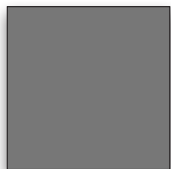
# DELHI

## SAAR

---



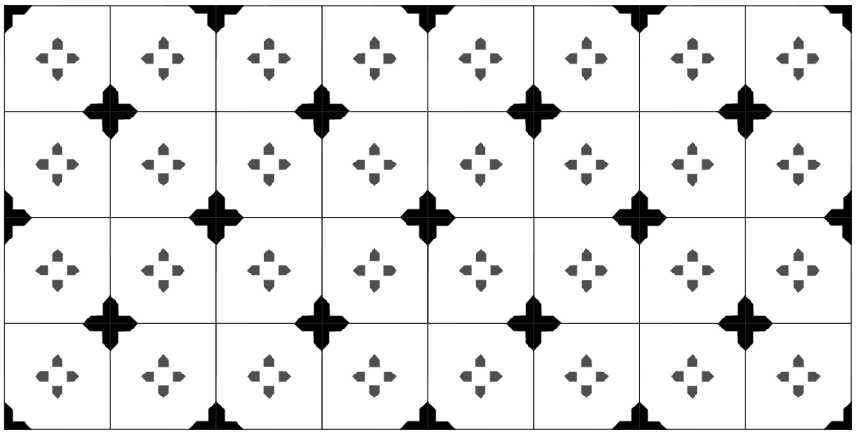
I see a star, you see a flower  
I see a circle, you see a hexagon  
I see shadows, you see the light in between



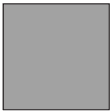
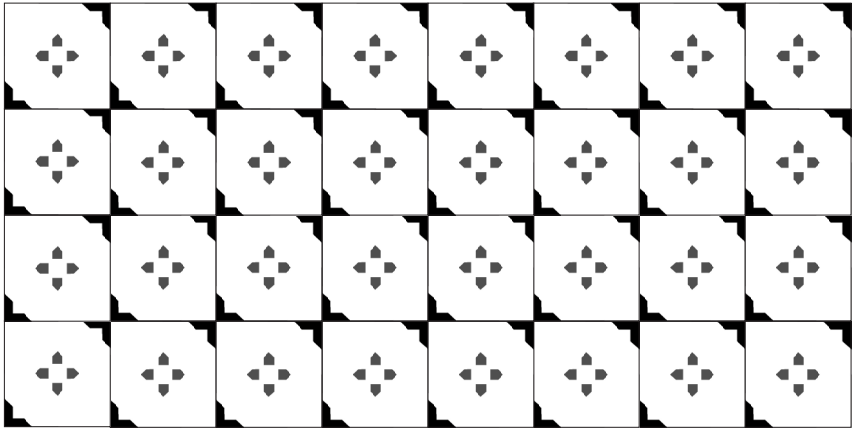




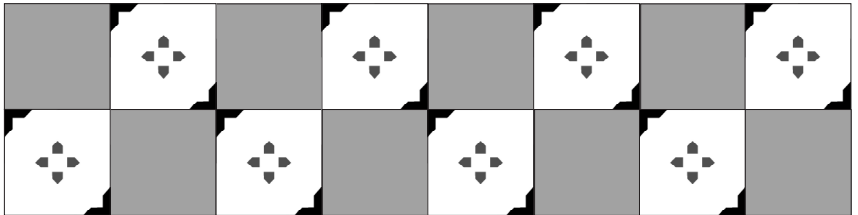
CC111



CC111



CC004



## Tile Specifications

**Thickness** - 20mm to 30mm

**Square**



300mmX300mm



250mmX250mm



200mmX200mm







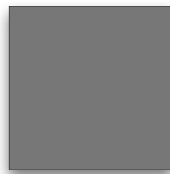
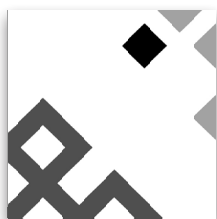
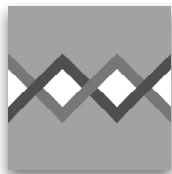
# BEIJING

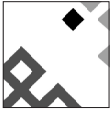
## INFINITY

---

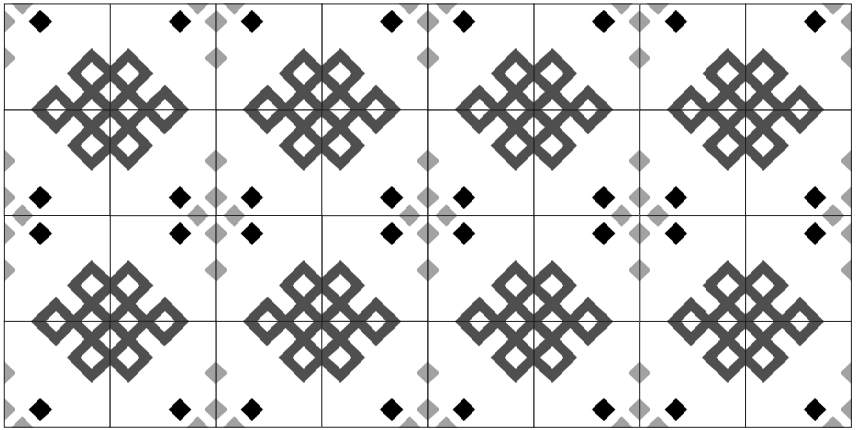


The good luck that weaves over & above,  
Through and through, on and on  
Beginning or end, I have no clue

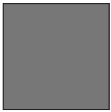
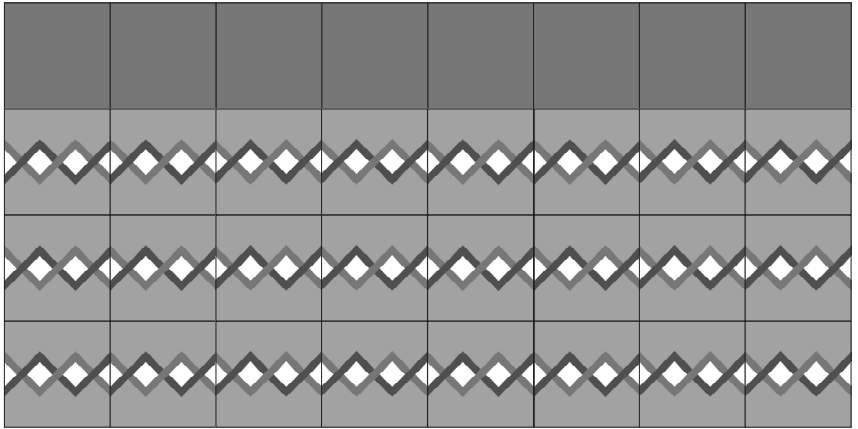




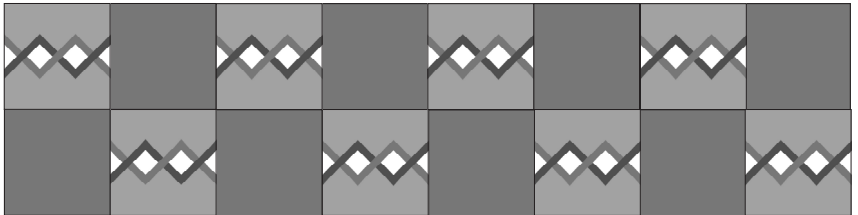
CC121



CC122



CC003



## Tile Specifications

**Thickness** - 20mm to 30mm

**Square**



300mmX300mm



250mmX250mm



200mmX200mm







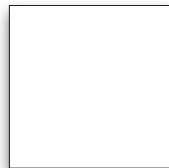
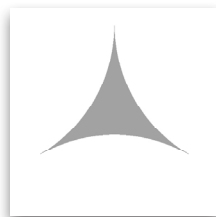
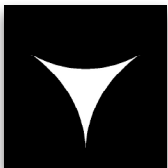
# BEIJING

## PRISM

---



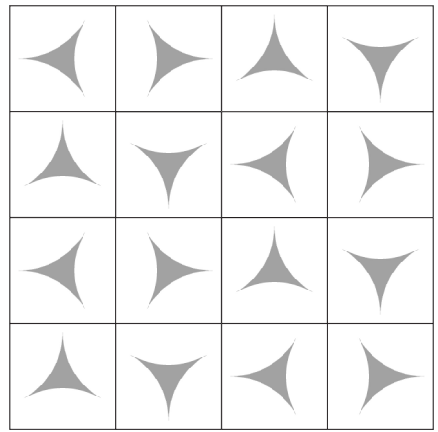
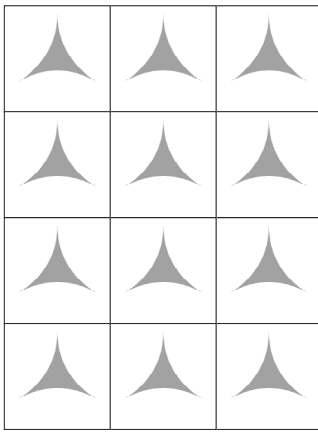
A paper fan rustles silk kimonos  
Under a curved sloping roof  
In the shade of sharp mountain peaks



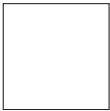
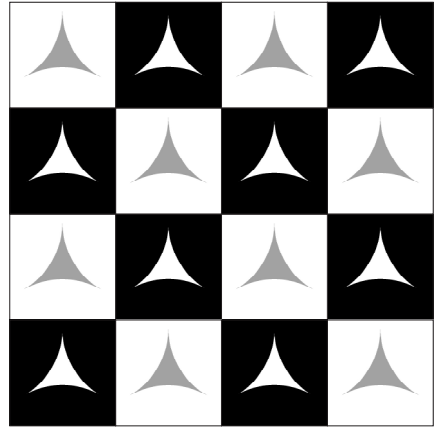
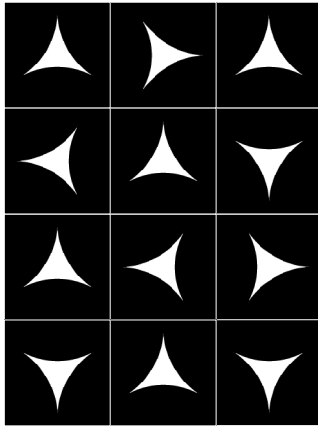




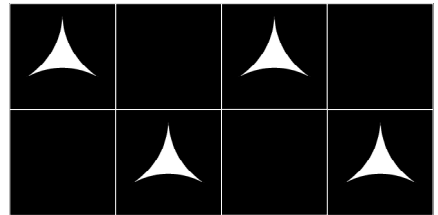
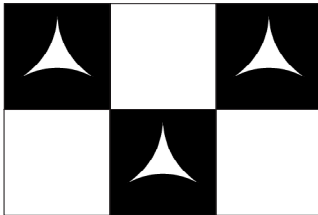
CC131



CC132



CC006



## Tile Specifications

**Thickness** - 20mm to 30mm

**Square**



300mmX300mm



250mmX250mm



200mmX200mm







# LONDON

## CONNECT

---

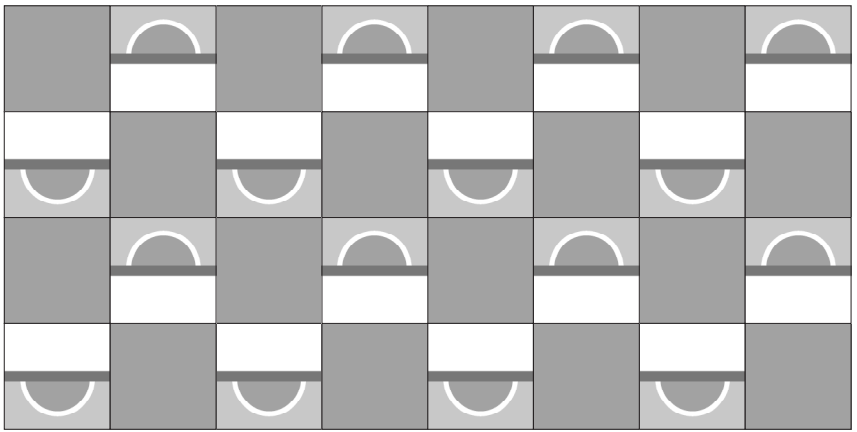


The Eye catches them everywhere  
At every nook and corner  
Going round and round

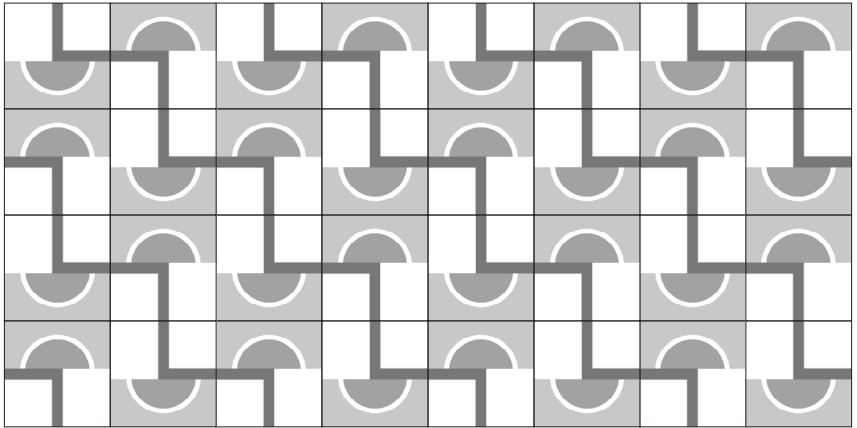




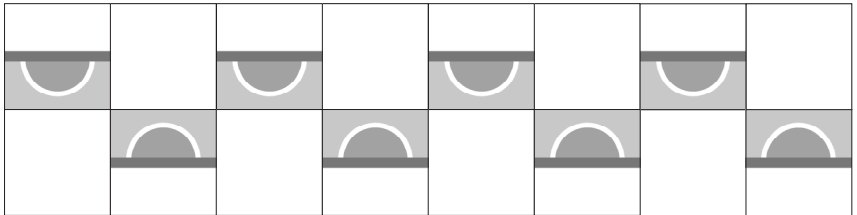
CC141



CC142



CC143



## Tile Specifications

**Thickness** - 20mm to 30mm

**Square**



300mmX300mm



250mmX250mm



200mmX200mm







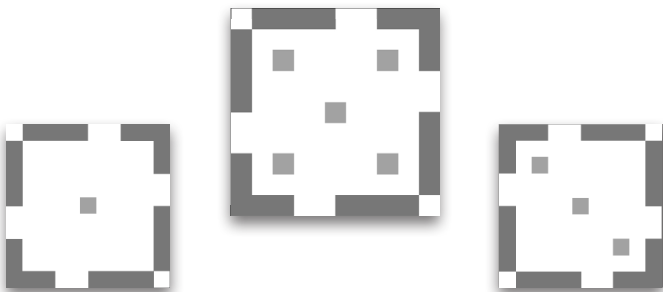
# LONDON

## THREAD

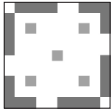
---



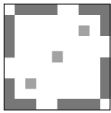
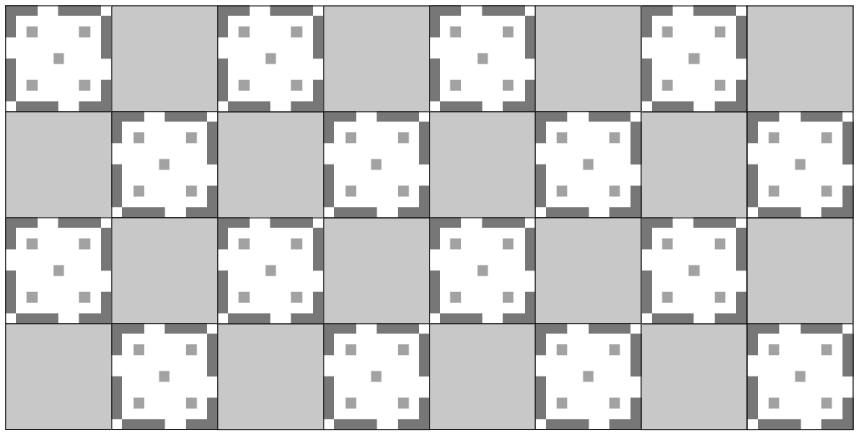
Step One, Three, Five  
Sidestep. Zigzag. Mind the gap!  
The Underground Tap dance



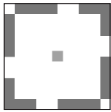
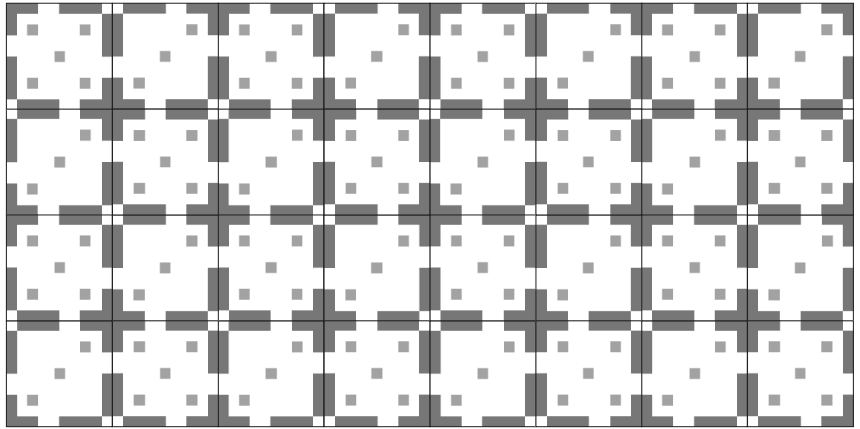




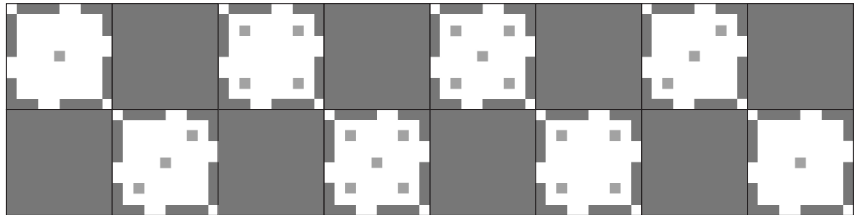
CC155



CC153



CC151



## Tile Specifications

**Thickness** - 20mm to 30mm

**Square**



300mmX300mm



250mmX250mm



200mmX200mm







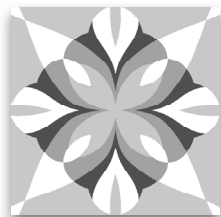
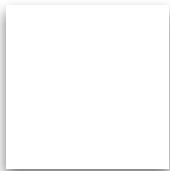
# NEW YORK

## DECO

---

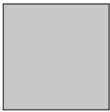
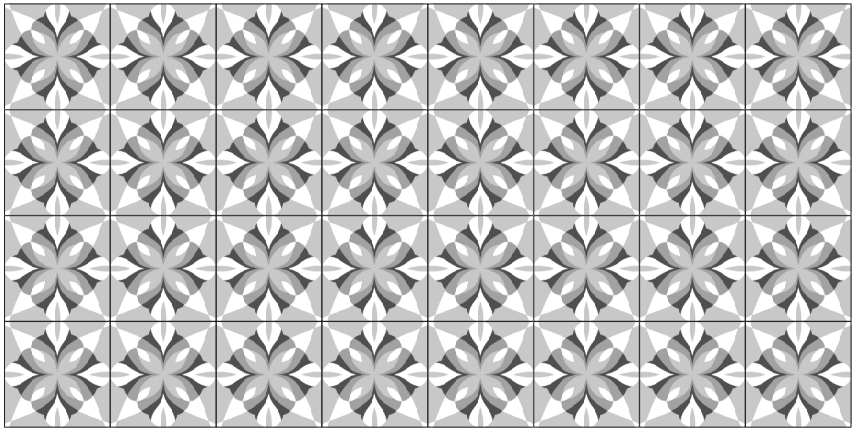


Where dreams met the sky  
Wealth met glass  
And curves met right angles

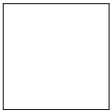
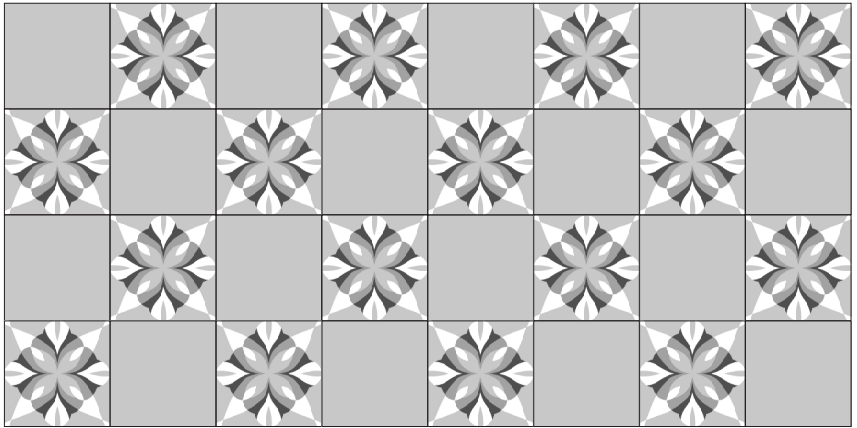




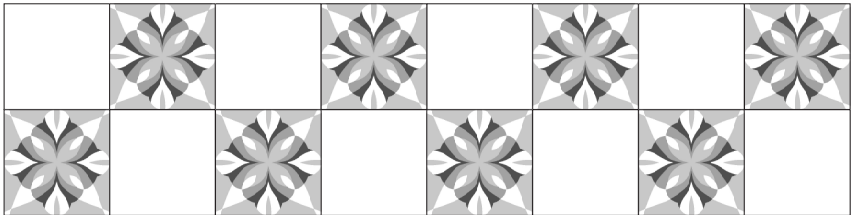
CC161



CC005



CC006



## Tile Specifications

**Thickness** - 20mm to 30mm

**Square**



300mmX300mm



250mmX250mm



200mmX200mm





Vivaldi



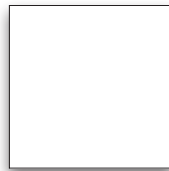
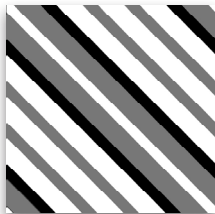
# NEW YORK

## JAZZ

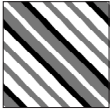
---



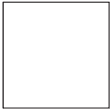
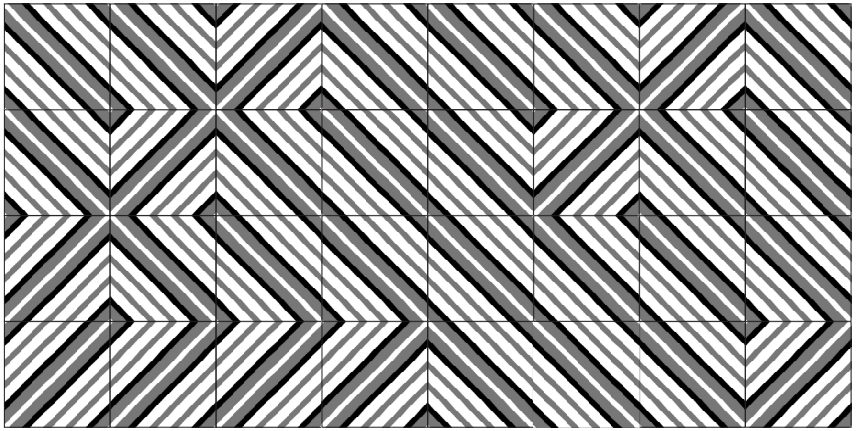
With a soft saxophone  
in a dim speakeasy,  
The Big Apple gave me  
A kiss to build a dream on



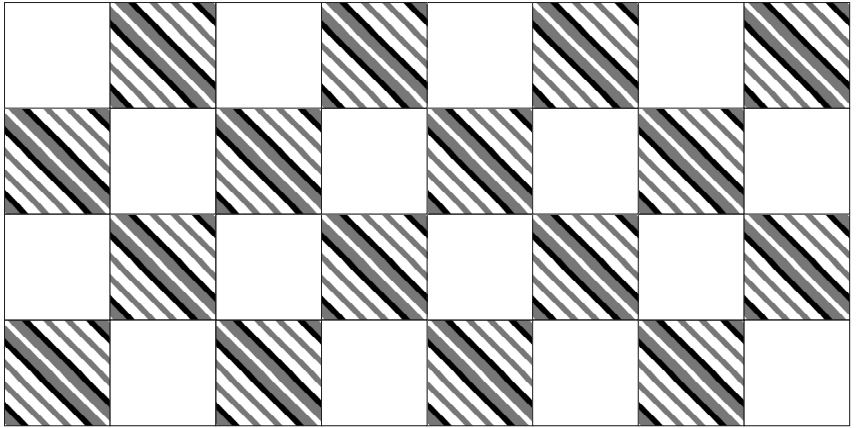




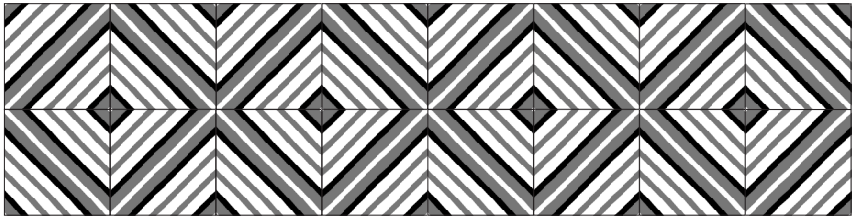
CC171



CC006



CC171



## Tile Specifications

**Thickness** - 20mm to 30mm

**Square**



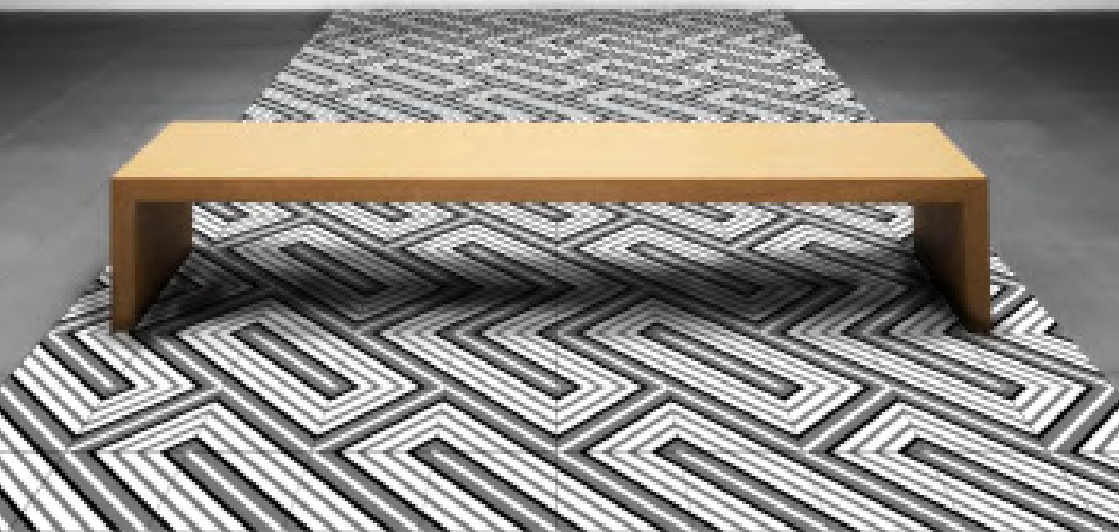
300mmX300mm



250mmX250mm



200mmX200mm







# INDUSTILE SERIES

## PREMIUM RANGE

Industries have brought historical changes in our progress as a species on Earth. Inspired by the magnitude of our consumption of natural resources, we designed IndusTile series to communicate the resulting consequences.

PAPER

+

Plants



TRANSPORT

+

Air



TANNERY

+

Leather



OIL

+

Sun

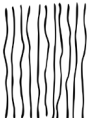




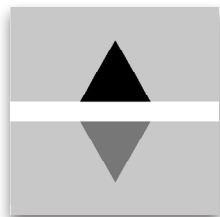
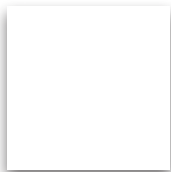
# PAPER

## DEMI

---

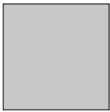
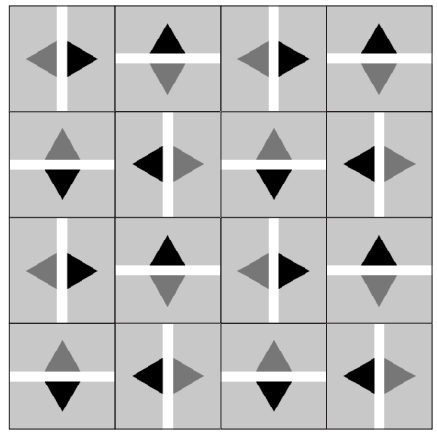
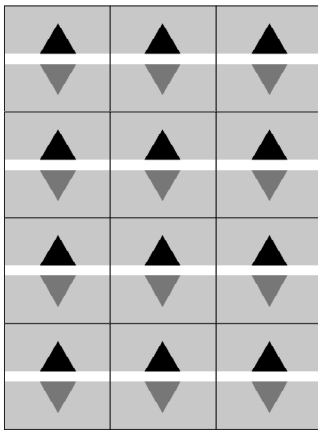


With high shoots and deep roots,  
The Papyrus remains  
The canvas to our life

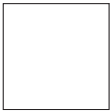
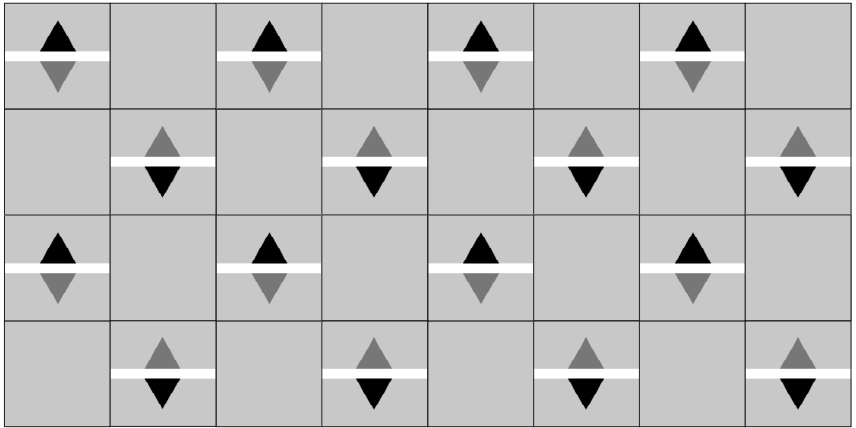




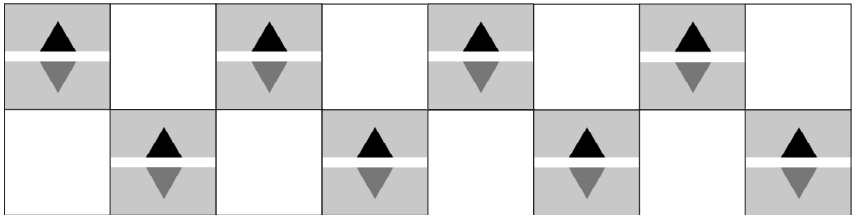
CC201



CC005



CC006



## Tile Specifications

**Thickness** - 20mm to 30mm

**Square**



300mmX300mm



250mmX250mm



200mmX200mm









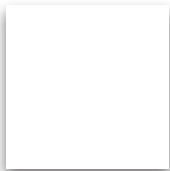
# PAPER

## FRACTAL

---

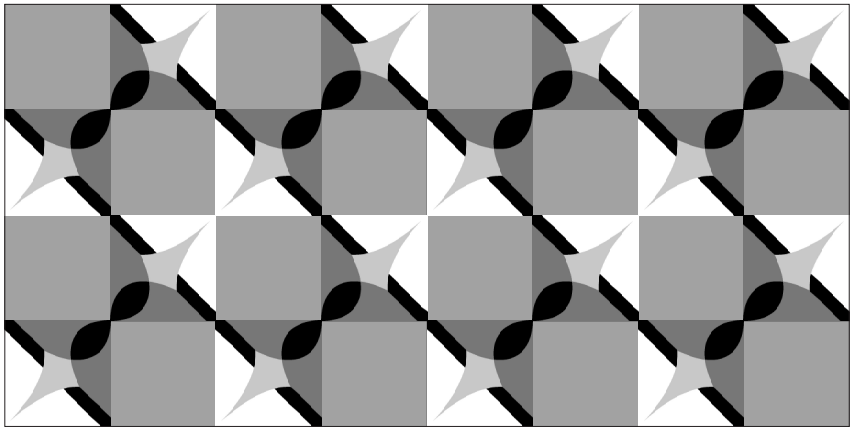


The canopy sighed  
A shower of leaves  
Every blade a masterpiece

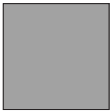
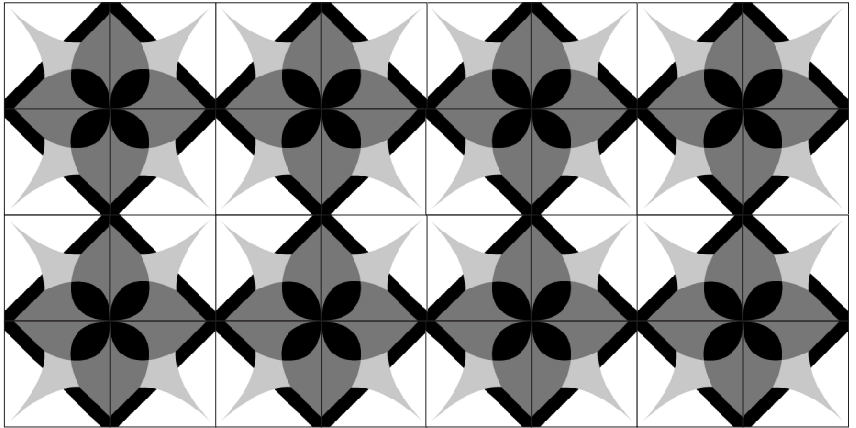




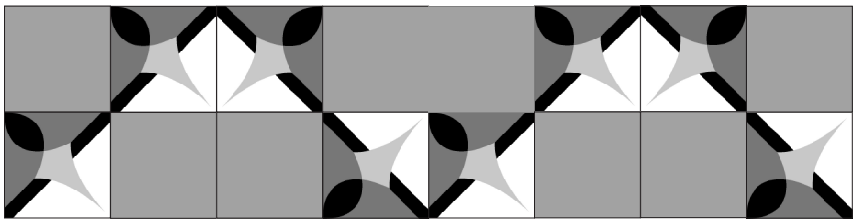
CC211



CC211



CC004



## Tile Specifications

**Thickness** - 20mm to 30mm

**Square**



300mmX300mm



250mmX250mm



200mmX200mm



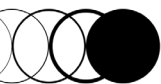




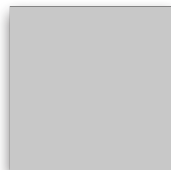
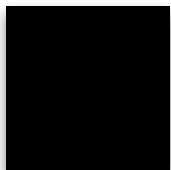
# TRANSPORT

## PIVOT

---

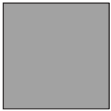
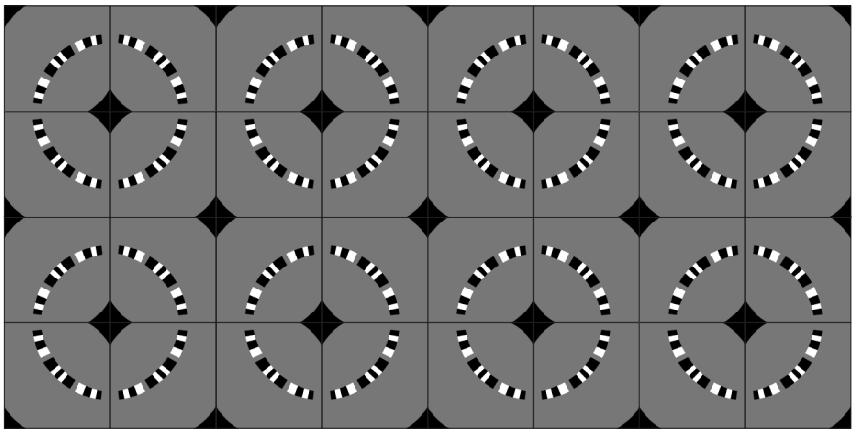


The line around a point  
The curve that moves the world  
The greatest invention by Man

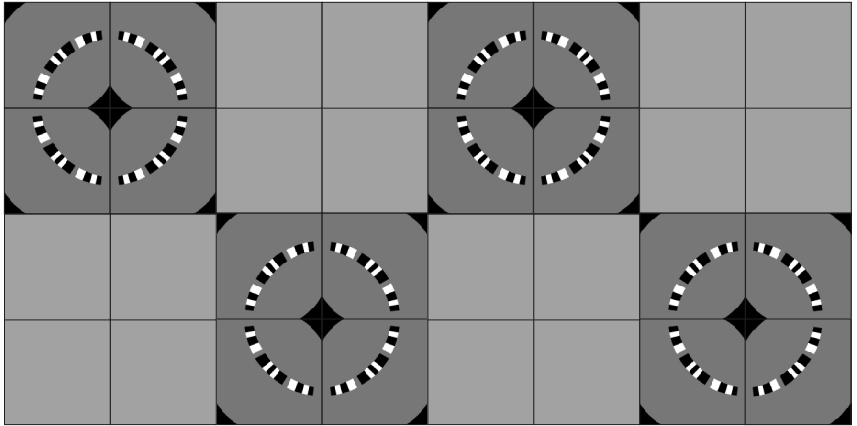




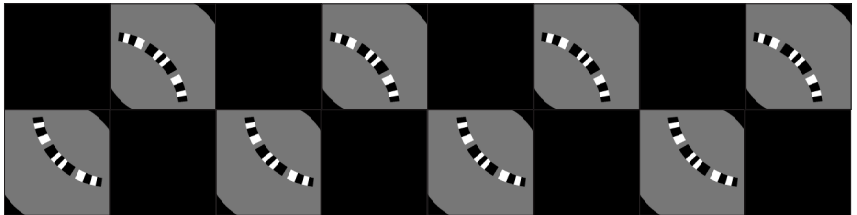
CC221



CC004



CC001



## Tile Specifications

**Thickness** - 20mm to 30mm

**Square**



300mmX300mm



250mmX250mm



200mmX200mm





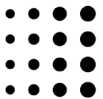




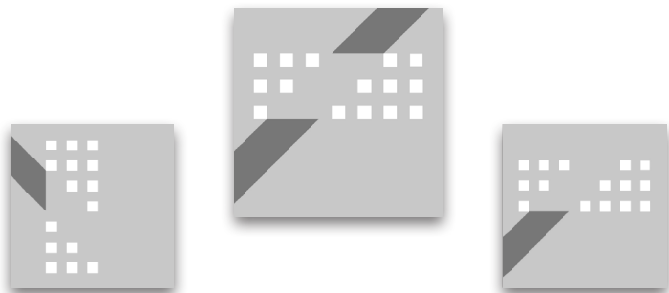
# TRANSPORT

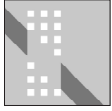
## PIXELS

---

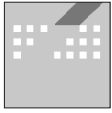
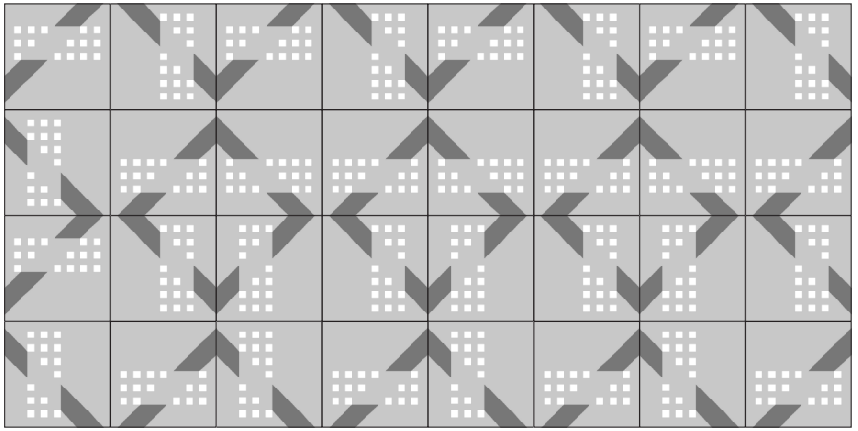


The wind on your face  
The thrum of wheels under your feet  
Watching life blur past: wanderlust

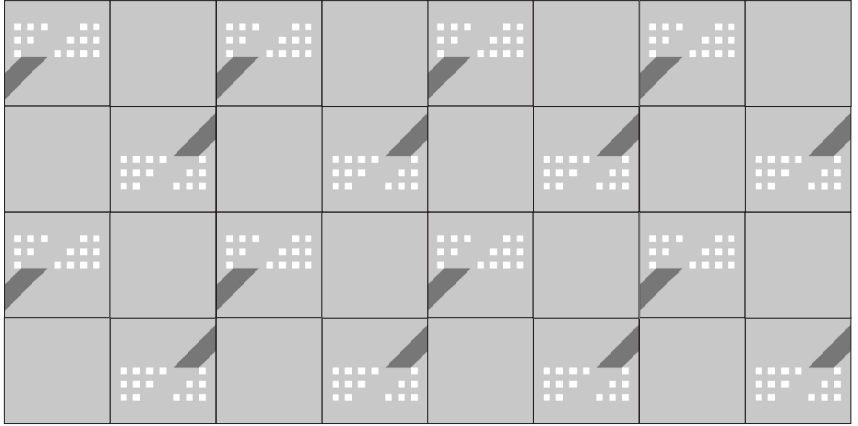




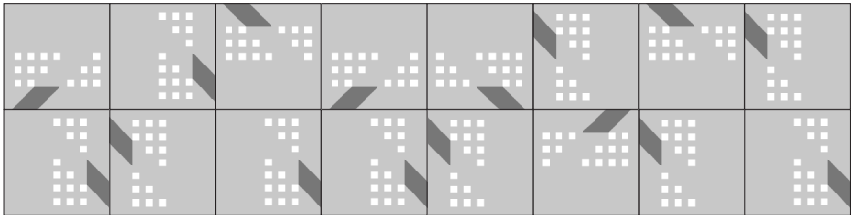
CC231



CC232



CC233



## Tile Specifications

**Thickness** - 20mm to 30mm

**Square**



300mmX300mm



250mmX250mm



200mmX200mm





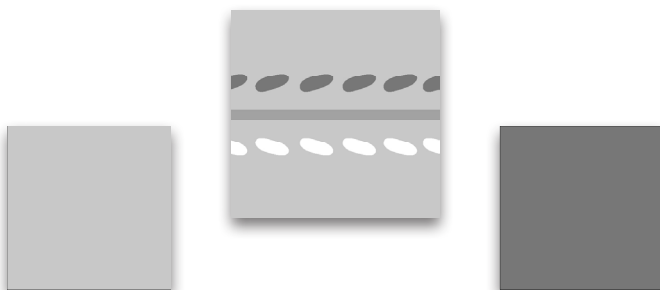
# TANNERY

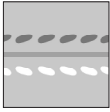
## WEAVE

---

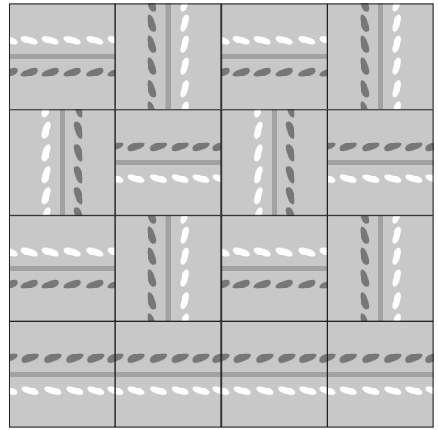
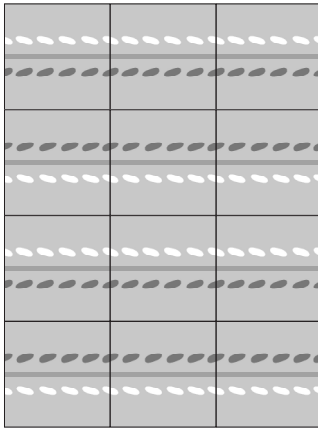


The classic suede seam  
The aristocratic border  
The edge of luxury

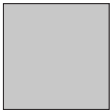
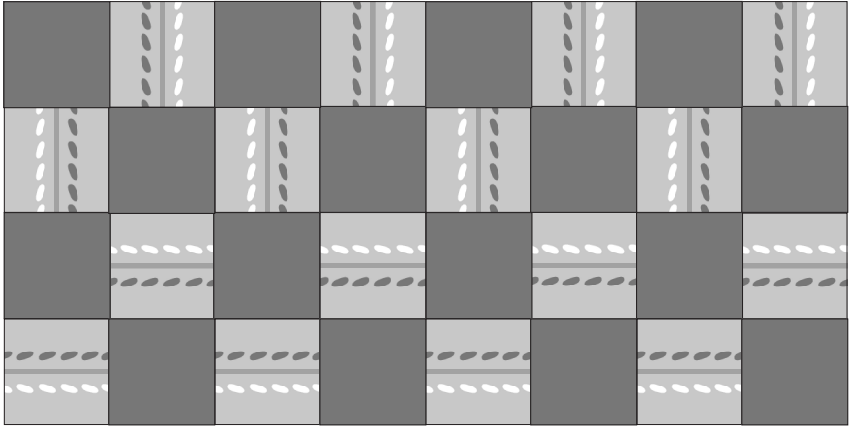




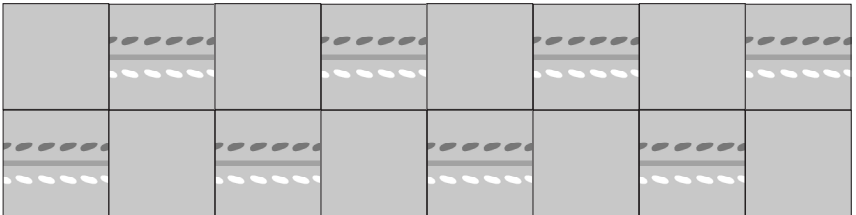
CC241



CC003



CC005



## Tile Specifications

**Thickness** - 20mm to 30mm

**Square**



300mmX300mm



250mmX250mm



200mmX200mm

**30**

**CARBON CRAFT DESIGN**









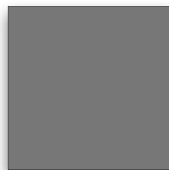
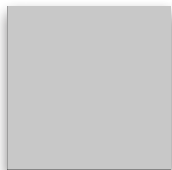
# TANNERY

## HIDE

---

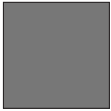
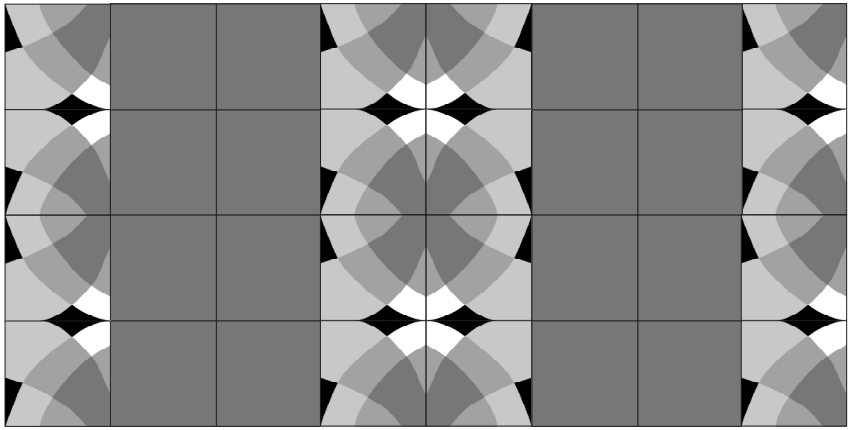


Sensitive the sense is  
Random the wrinkle is  
Playful the touch is

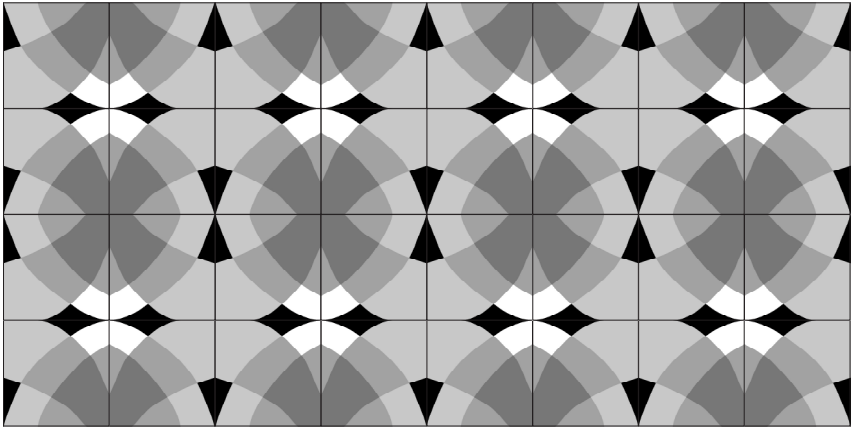




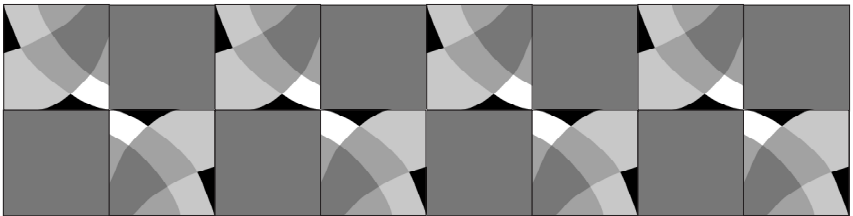
CC251



CC003



CC003



## Tile Specifications

**Thickness** - 20mm to 30mm

**Square**



300mmX300mm



250mmX250mm



200mmX200mm







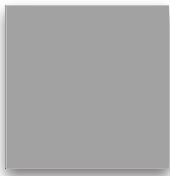
# OIL

## DRIP

---

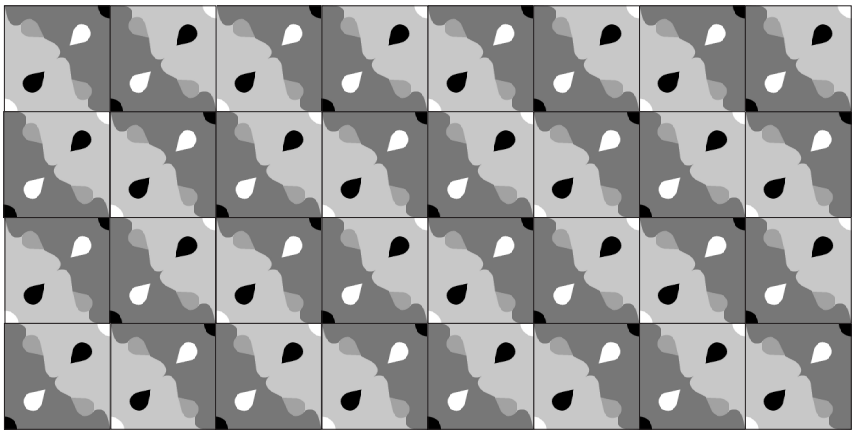


It fell from the sky  
A drop of golden Sun  
And the course was altered

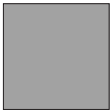
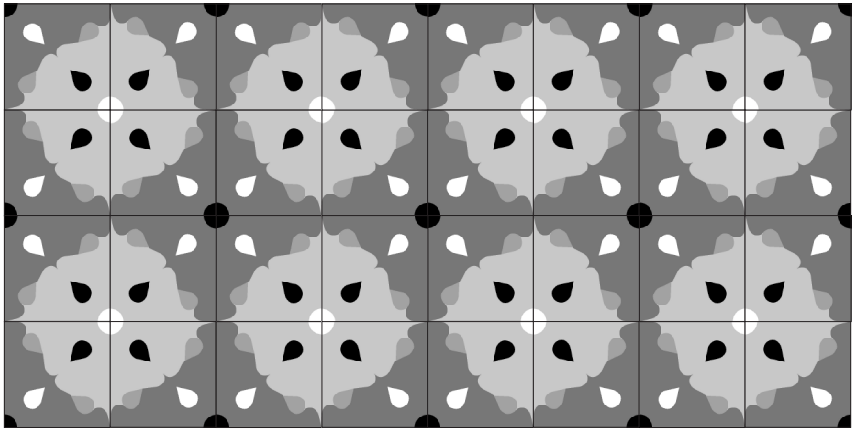




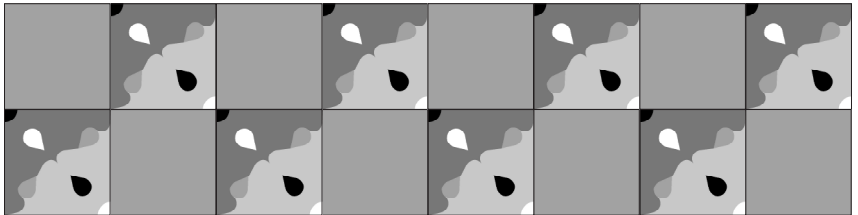
CC261



CC261



CC004



## Tile Specifications

**Thickness** - 20mm to 30mm

**Square**



300mmX300mm



250mmX250mm



200mmX200mm









# OIL

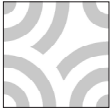
## EMBRACE

---

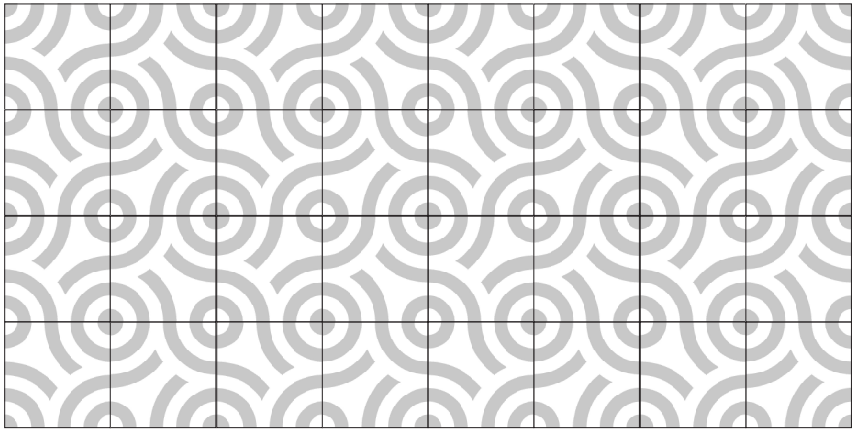


Substance that is formless  
Movement that is flawless  
Bonds that are endless

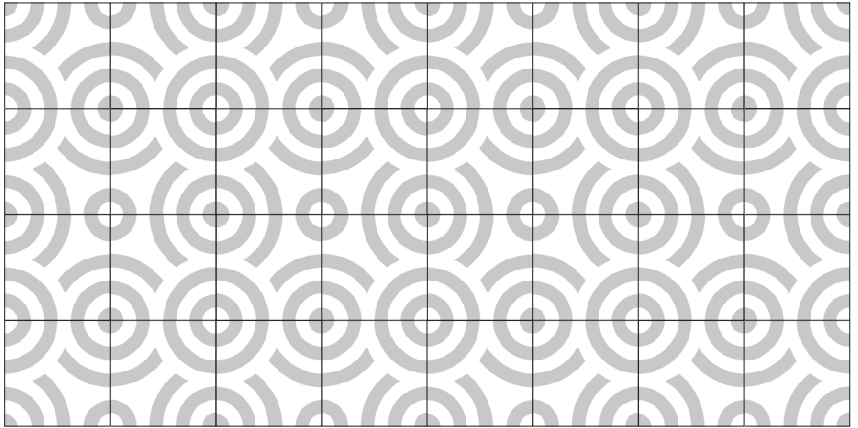




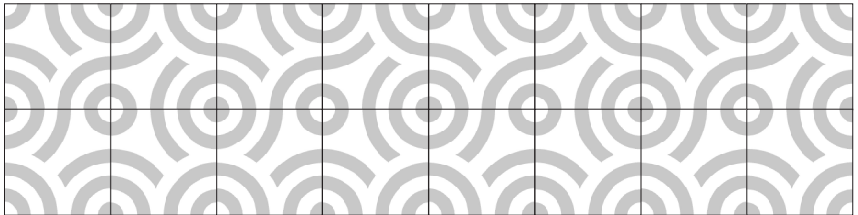
CC271



CC271



CC271



## Tile Specifications

---

**Thickness** - 20mm to 30mm

**Square**



300mmX300mm



250mmX250mm



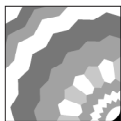
200mmX200mm



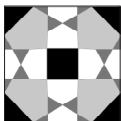


# IDENTILE CATALOGUE

**DELHI**



CC101



CC102



CC111

**BEIJING**



CC121



CC122



CC131



CC132

**LONDON**



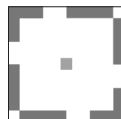
CC141



CC142



CC143

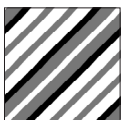


CC151

**NEWYORK**



CC161



CC171

**PLAIN**



CC001



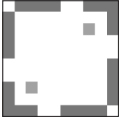
CC002



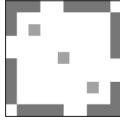
CC003



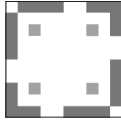
CC004



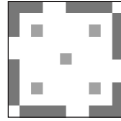
**CC152**



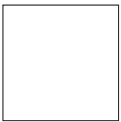
**CC153**



**CC154**



**CC155**



**CC005**

# INDUSTILE CATALOGUE

## PAPER



CC201

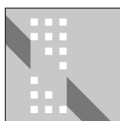


CC211

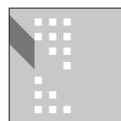
## TRANSPORT



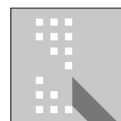
CC221



CC231

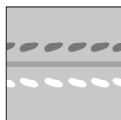


CC232



CC233

## TANNERY



CC241



CC251

## OIL



CC261



CC271

## PLAIN



CC001



CC002

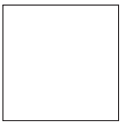


CC003



CC004





**CC005**



# FAQs

## WHAT IS CARBON TILE?

Carbon Tile is the first Tile to be made with Air Pollution that aims to offset the world's carbon emissions at scale through a conventional construction material.

## HOW IS THE POLLUTION COLLECTED AND USED IN THE CARBON TILE?

We collaborate with carbon capturing/ collecting companies who are experts at recovering carbon from multiple sources. We follow a 3 stage process of Collect - Process - Build. We collect the carbon from various partners around India then process the carbon and standardise it at our facility. This carbon is then ready to be used in the making of Carbon Tiles.

## HOW DO I REDUCE AIR POLLUTION BY CHOOSING CARBON TILES?

1 Carbon Tile is equivalent to preventing 30,000 litres of air from being polluted. That is how much an average adult person breathes for a day. More the area, more the amount of carbon emissions is offsetted from the environment.

## IS IT SAFE TO USE THESE TILES?

Yes, Carbon Tiles are perfectly safe like any other tiles. In fact, they are composed of natural materials like marble chips, marble powder and stone dust. We have RoHS certification for our Carbon Tiles. After polishing, an additional coating could be applied for finish and surface protection. Also, refer to Caution under Maintenance and Care.

## WHAT IS THE REQUIRED LEAD TIME?

Upon order confirmation, the standard range of tiles will be delivered in 30-40 days. Custom Designs and Designer tiles will require upto 60 days.

## WHY ARE THE JOINT LINES VISIBLE ONCE THE TILES ARE LAID?

Tiles are laid in very close vicinity with a 1-2mm gap for the grouting material which is necessary to keep tiles intact along with the bottom bedding material.

## WHY ARE THERE SLIGHT DIFFERENCES IN THE TILES?

Carbon Tiles are handcrafted which results in their slight variations such as edge splinters and color smudging. This is what gives it the exquisite appeal of handmade products. The minor color variations in tiles of different batches may arise due to the very random nature of carbon particles.

## Technical Details

---

### Wet Transverse Strength

3N/mm<sup>2</sup>

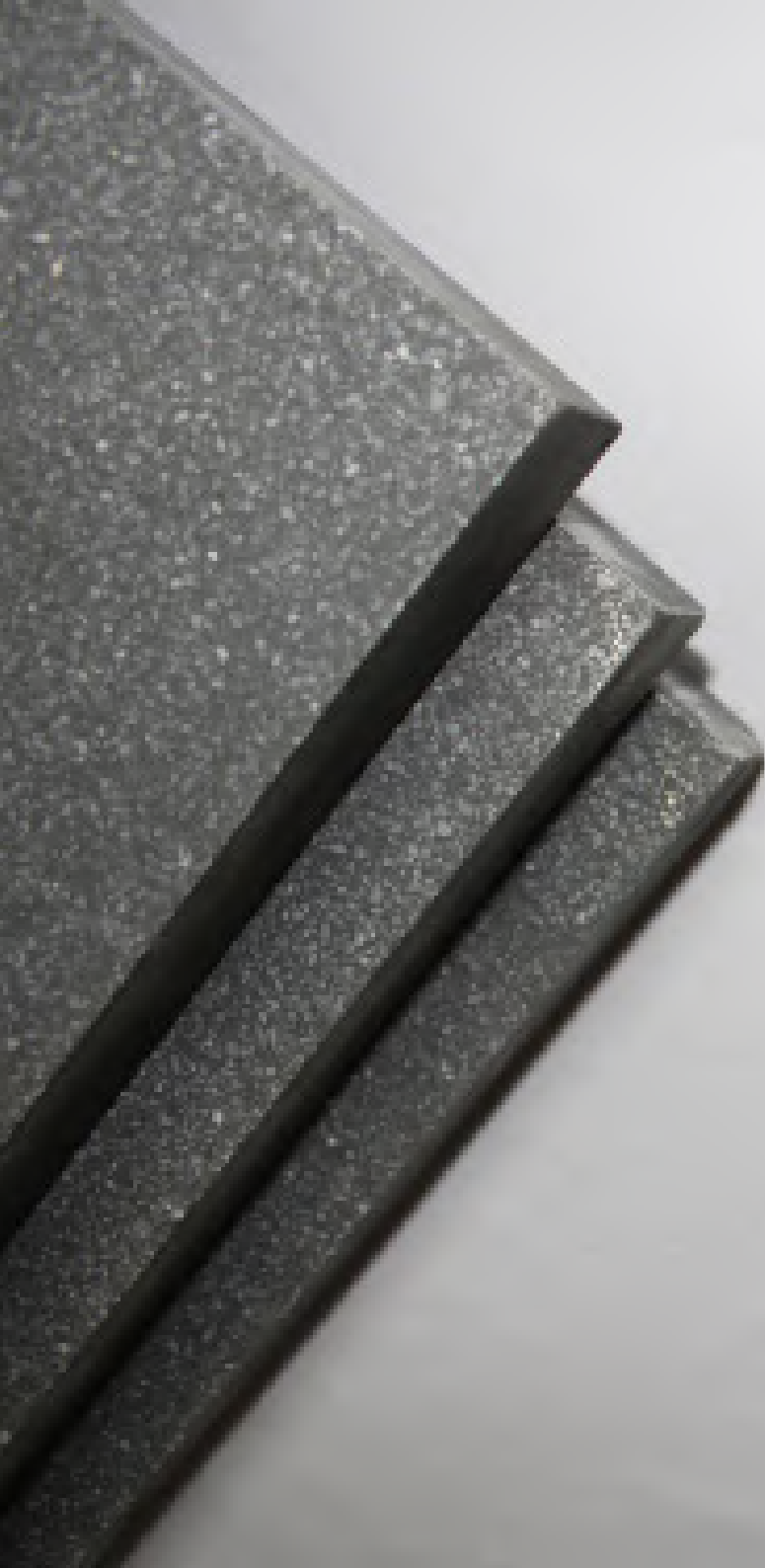


40

### Water Absorption

Below 10%





# MAINTENANCE & CARE

Carbon Tile floors can last up to 70 years if used and maintained properly. We took utmost care in crafting the tiles for your use. These are the series of measures for maintenance and usage of Carbon Tiles.

## **LAYING:**

There will be dimensional variations both in thickness and right angles as it is handmade. Variations will have to be adjusted accordingly by the mason to attain the desired layout.

## **APPLICATION:**

Carbon Tiles are recommended for horizontal and vertical surfaces in indoor spaces. Usage of these tiles in outdoor open areas may lead to a weathered appearance and loss of polish.

## **POLISHING:**

As per usage and footfall traffic, tiles may require repolishing to maintain the gleaming surface. Carbon Tiles can be repolished multiple times over its lifespan.

## **CAUTION:**

These tiles are not recommended for areas where there will be frequent spillage of oil or masalas such as kitchen countertops, and heavy wet areas like bathrooms.

## **ROUTINE:**

For daily maintenance, mop with normal water with attention to changing the water often. Please do not use harsh cleaning chemicals, phenyl, etc.

“As an architect you design for the present,  
with an awareness of the past for a future  
which is essentially unknown.”

— **Norman Foster**





Pavan Plaza, Ground Floor, Near Old Income Tax  
Office, Vidhya Nagar, Hubli - 580021

W : [www.carboncraftdesign.com](http://www.carboncraftdesign.com) E : [info@carboncraftdesign.com](mailto:info@carboncraftdesign.com) M : 0836 3560298