



BEAUTY
AND
DEEP
BREATH
OF
NATURE

15x90cm | Porcelain Tiles



Nueva Arté

collection is a ceramic surface with a distinctive style and personality. inspired by the **Mexican Culture** with unique appeal of resin, it comes in an on-trend color palette in which natural tones encounter unexpected influences from the world of arte stones.





**BEAUTY
AND THE
DEEP
BREATH OF
NATURE**



SUITABLE
FOR HOME &
OFFICE, SHOWROOM,
PATHWAY AND
EVEN FOR
WALL/FLOOR DECOR

15x90cm
150x900mm
Porcelain Tiles

10mm
THICKNESS

-  Floor tiles
-  Anti-slip
-  Wall tiles



WHAT'S ORIGINAL MOULD TILE?

मूल मोल्ड टाइल क्या है?

IN THE PAST, THERE ARE 2 KINDS OF TILE: **RECTIFIED TILE** AND **ORIGINAL MOULD TILE**.
अतीत में, 2 प्रकार की टाइलें होती हैं: संशोधित टाइल और मूल मोल्ड टाइल।

WHAT'S
THE
DIFFERENCES



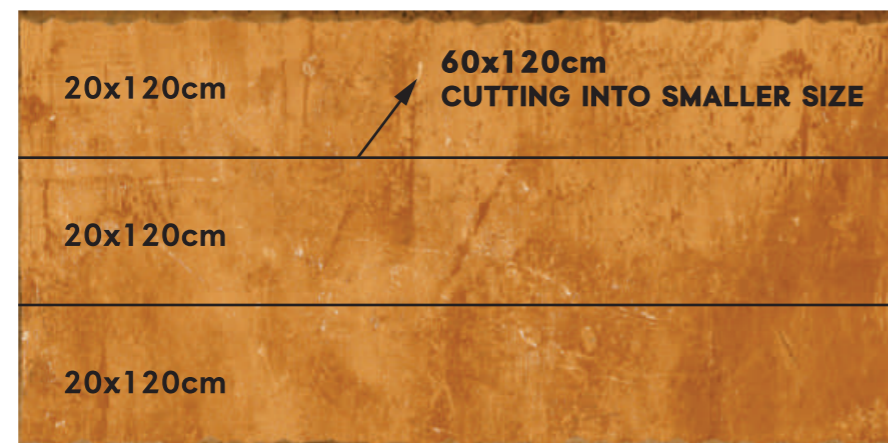
1

RECTIFIED TILE

FACTORY PRODUCED THE BIGGER SIZE WOOD TILE FIRST,
THEN CUT INTO THE RIGHT SIZE.

FOR **20X120CM** EXAMPLE, IT IS CUTTED FROM **60X120CM**

फैक्ट्री ने पहले बड़े आकार की टाइल का उत्पादन किया,
फिर सही आकार में काट लें।
20X120CM उदाहरण के लिए, इसे 60X120CM से काटा गया है



2

ORIGINAL MOULD TILE

TRADITIONAL RECTIFIED TILES IS CUTTING FROM BIG SIZE,
IT IS EASY TO BEND.

BUT THE ORIGINAL MOULD TILE WILL NOT.

पारंपरिक सुधारित टाइलें बड़े आकार से कट रही हैं,
झुकना आसान है।

लेकिन मूल मोल्ड टाइल नहीं होगी।



WHY ORIGINAL MOULD TILE MUCH BETTER

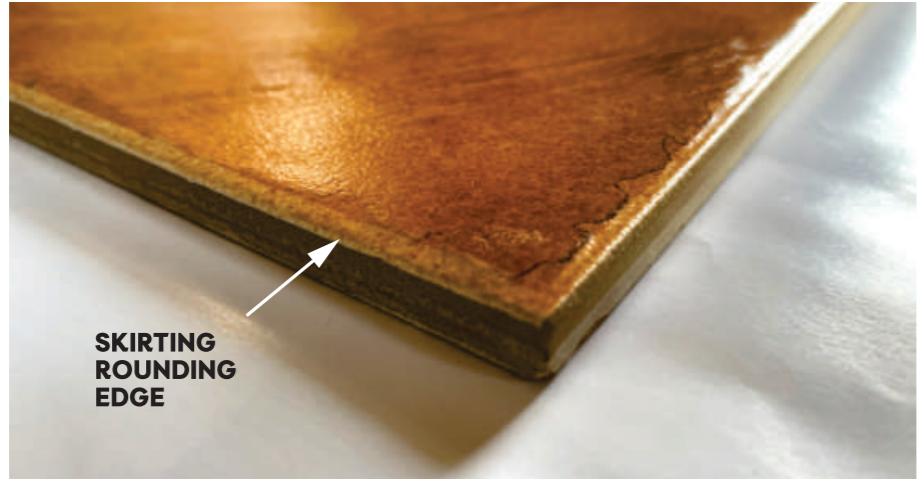
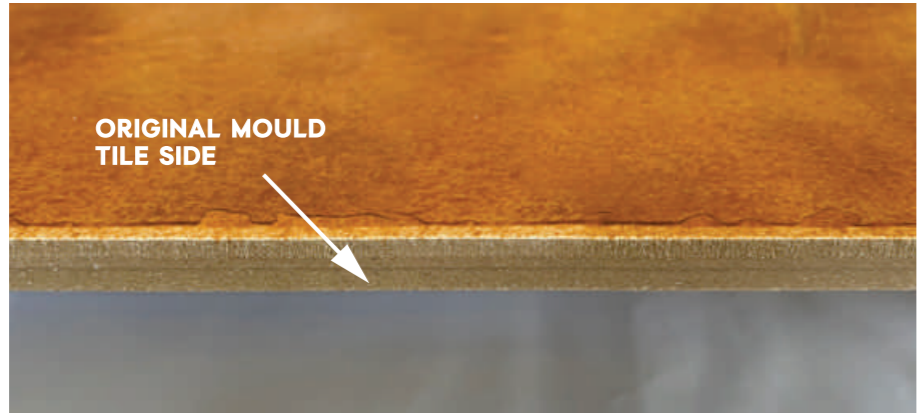
क्यों है मूल मोल्ड टाइल काफी बेहतर ?



1

SOLVE BEND DEFECT, HIGH HARDNESS
NEW TECHNOLOGY, ADVANCED EQUIPMENTS

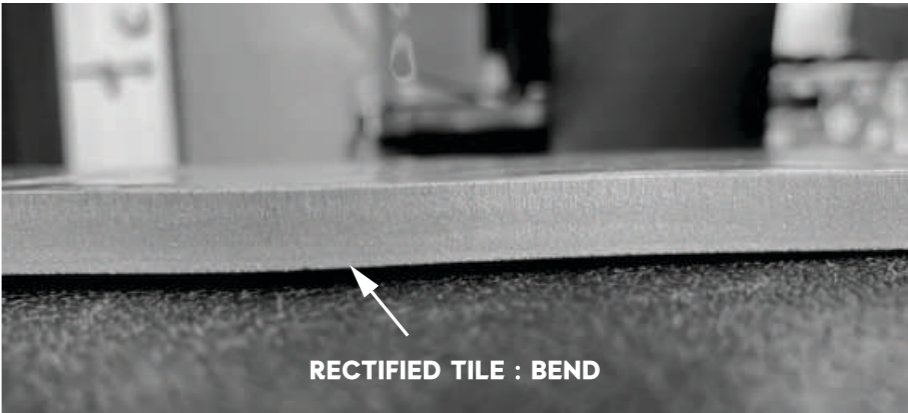
बेंड दोष को हल करें, उच्च कठोरता
नई टेक्नोलॉजी, उन्नत उपकरण



2

STRAIGHT, BEND DEFECT SOLVED.

सीधा, झुकना दोष हल किया।





HANNAH NARANZA

BASE



DECORE



HANNAH NARANZA



Nueva Arté Inspired Mexican Trend
 FORMAT: **15x90cm** - PORCELAIN TILES





HANNAH CHOCO

BASE



DECORE



HANNAH CHOCO



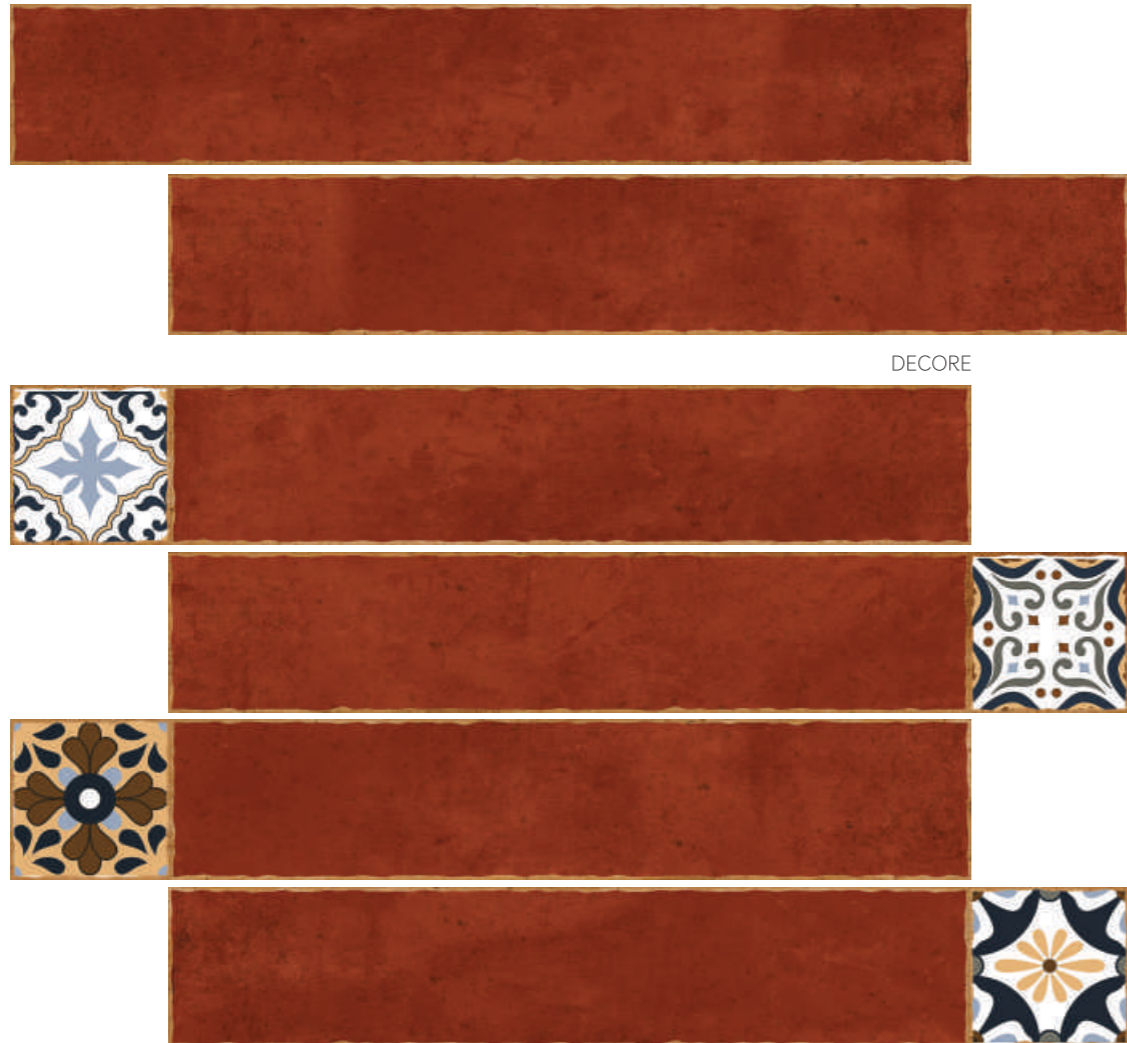
Nueva Arté Inspired Mexican Trend
FORMAT: 15x90cm - PORCELAIN TILES





HANNAH MARRON

BASE



DECORE

HANNAH
MARRON



Nueva Arté Inspired Mexican Trend
FORMAT: 15x90cm - PORCELAIN TILES



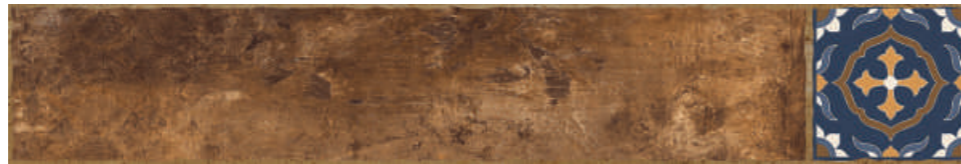
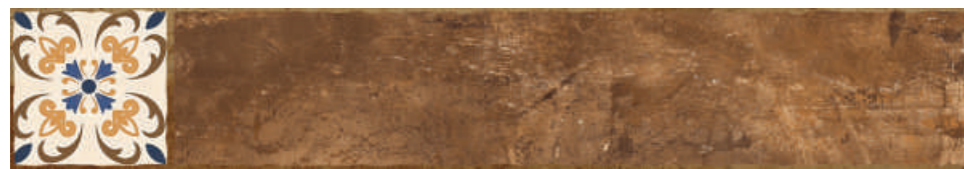


HANNAH NUT

BASE



DECORE



HANNAH
NUT



Nueva Arté Inspired Mexican Trend
FORMAT: 15x90cm - PORCELAIN TILES





HANNAH GRIS

BASE



DECORE

HANNAH
GRIS



Nueva Arté Inspired Mexican Trend
FORMAT: **15x90cm** - PORCELAIN TILES





HANNAH OSCURA

BASE



DECORE



HANNAH
OSCURA



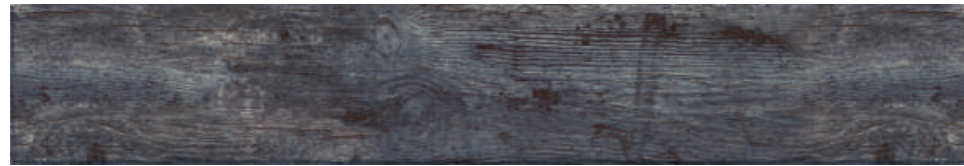
Nueva Arté Inspired Mexican Trend
FORMAT: **15x90cm** - PORCELAIN TILES



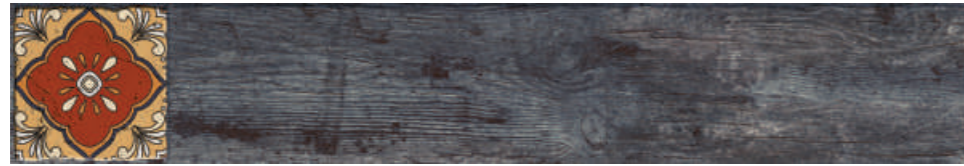


SEQUOIA AZUL

BASE



DECORE



SEQUOIA
AZUL



Nueva Arté Inspired Mexican Trend
FORMAT: 15x90cm - PORCELAIN TILES





SEQUOIA NUT

BASE



DECORE



SEQUOIA
NUT



Nueva Arté Inspired Mexican Trend
FORMAT: **15x90cm** - PORCELAIN TILES



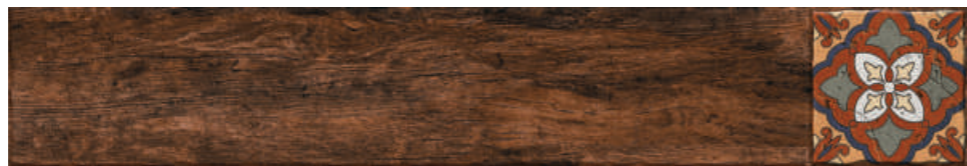
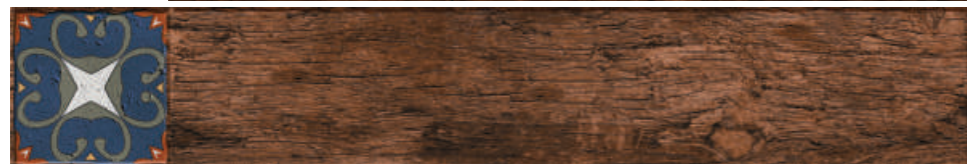


SEQUOIA MARRON

BASE



DECORE



SEQUOIA
MARRON



Nueva Arté Inspired Mexican Trend
FORMAT: 15x90cm - PORCELAIN TILES





CICILIA VERDE

BASE



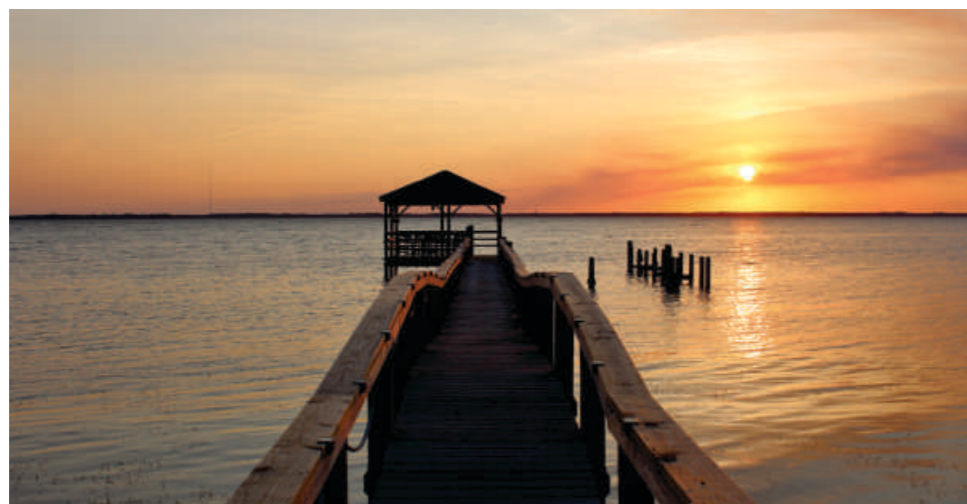
DECORE



Nueva Arté Inspired Mexican Trend
 FORMAT: 15x90cm - PORCELAIN TILES

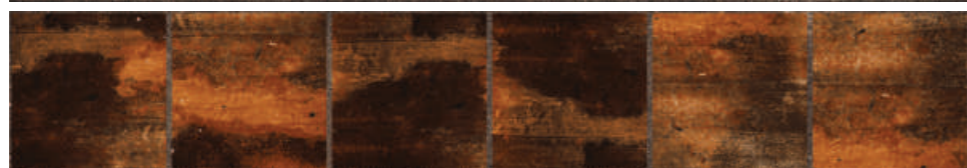
CICILIA
 VERDE





CICILIA CHOCO

BASE



DECORE



CICILIA
CHOCO



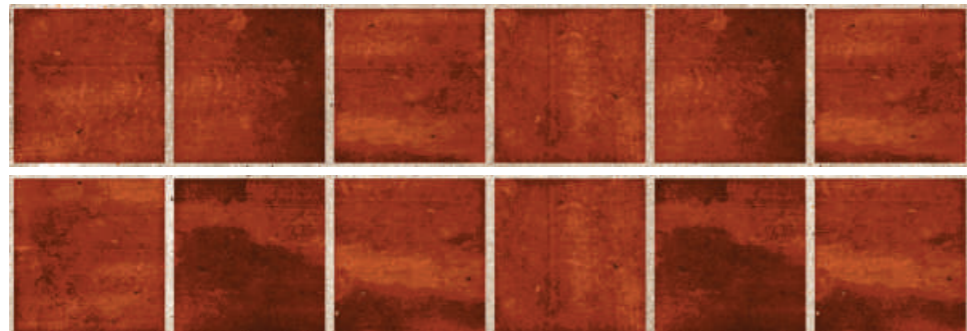
Nueva Arté Inspired Mexican Trend
FORMAT: **15x90cm** - PORCELAIN TILES





CICILIA MARRON

BASE



DECORE



CICILIA
MARRON



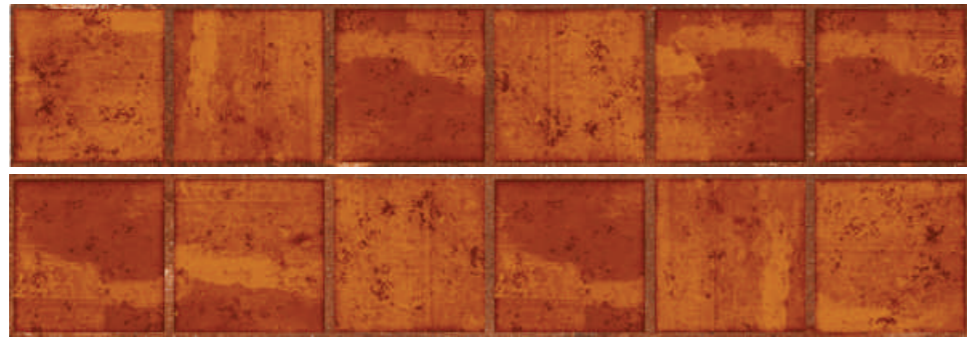
Nueva Arté Inspired Mexican Trend
FORMAT: 15x90cm - PORCELAIN TILES





CICILIA NARANZA

BASE



DECORE



CICILIA NARANZA



Nueva Arté Inspired Mexican Trend
FORMAT: **15x90cm** - PORCELAIN TILES





PENNY AMBER

BASE



DECORE



PENNY
AMBER



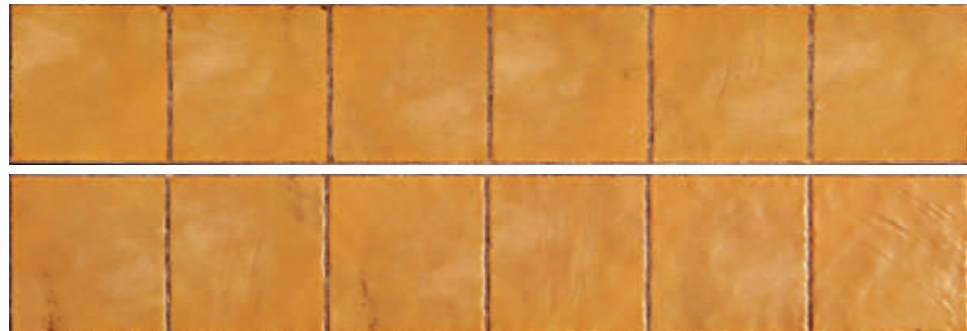
Nueva Arté Inspired Mexican Trend
FORMAT: **15x90cm** - PORCELAIN TILES





PENNY MARFIL

BASE



DECORE



PENNY
MARFIL



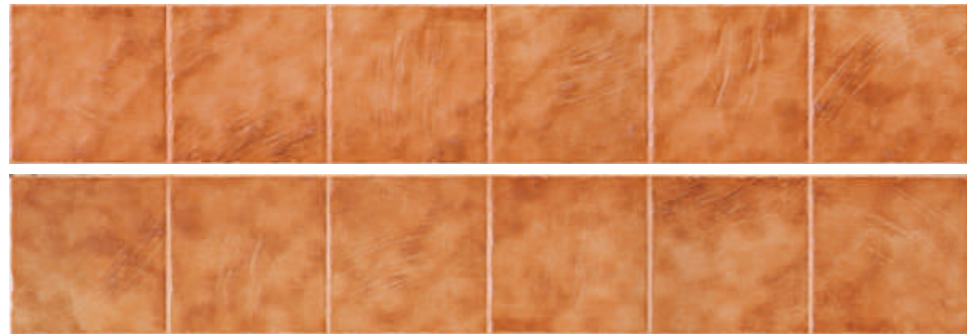
Nueva Arté Inspired Mexican Trend
FORMAT: **15x90cm** - PORCELAIN TILES





PENNY BEIGE

BASE



DECORE



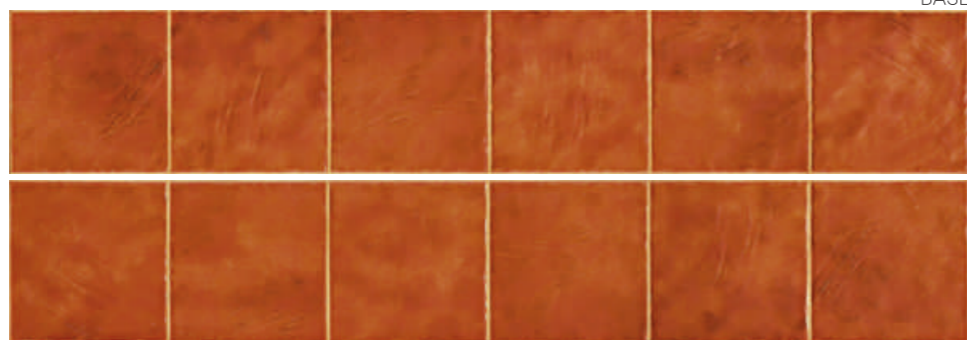
Nueva Arté Inspired Mexican Trend
FORMAT: 15x90cm - PORCELAIN TILES

PENNY
BEIGE





PENNY BROWN



BASE



DECORE

PENNY BROWN



Nueva Arté Inspired Mexican Trend
 FORMAT: **15x90cm** - PORCELAIN TILES





GLORIA ROSSA



GLORIA
ROSSA



Nueva Arté Inspired Mexican Trend
FORMAT: **15x90cm** - PORCELAIN TILES





MEXICO FLORA



MEXICO
FLORA



Nueva Arté Inspired Mexican Trend
FORMAT: 15x90cm - PORCELAIN TILES





ENCORE



ENCORE

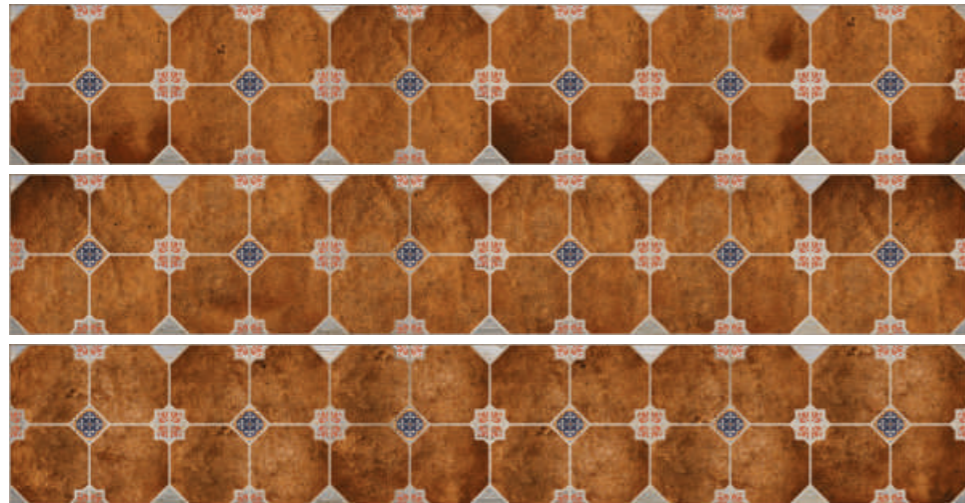


Nueva Arté Inspired Mexican Trend
FORMAT: 15x90cm - PORCELAIN TILES





KAROLINA OXIDO



KAROLINA
OXIDO



Nueva Arté Inspired Mexican Trend
FORMAT: **15x90cm** - PORCELAIN TILES





FILLIPA BLOOM



FILLIPA
BLOOM



Nueva Arté Inspired Mexican Trend
FORMAT: **15x90cm** - PORCELAIN TILES





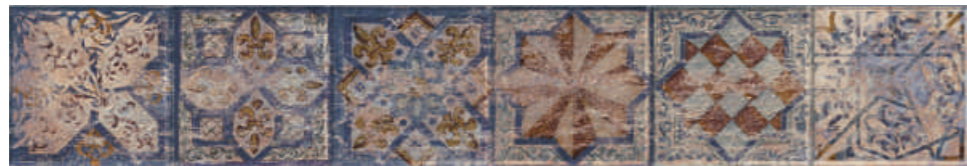
JANET



BASE



DECORE



JANET



Nueva Arté Inspired Mexican Trend
FORMAT: **15x90cm** - PORCELAIN TILES





NORAH



NORAH



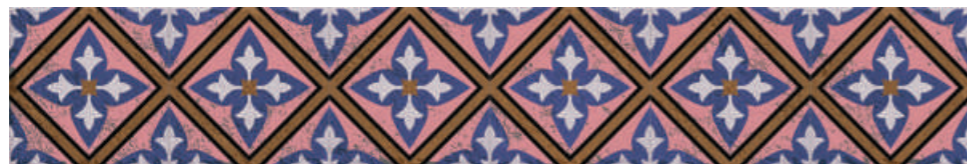
Nueva Arté Inspired Mexican Trend
FORMAT: **15x90cm** - PORCELAIN TILES





ALICE

ALICE



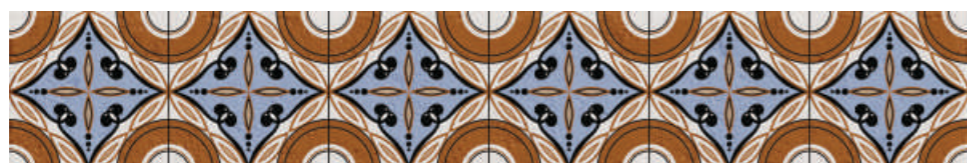
A



B



C



D



E



F



G



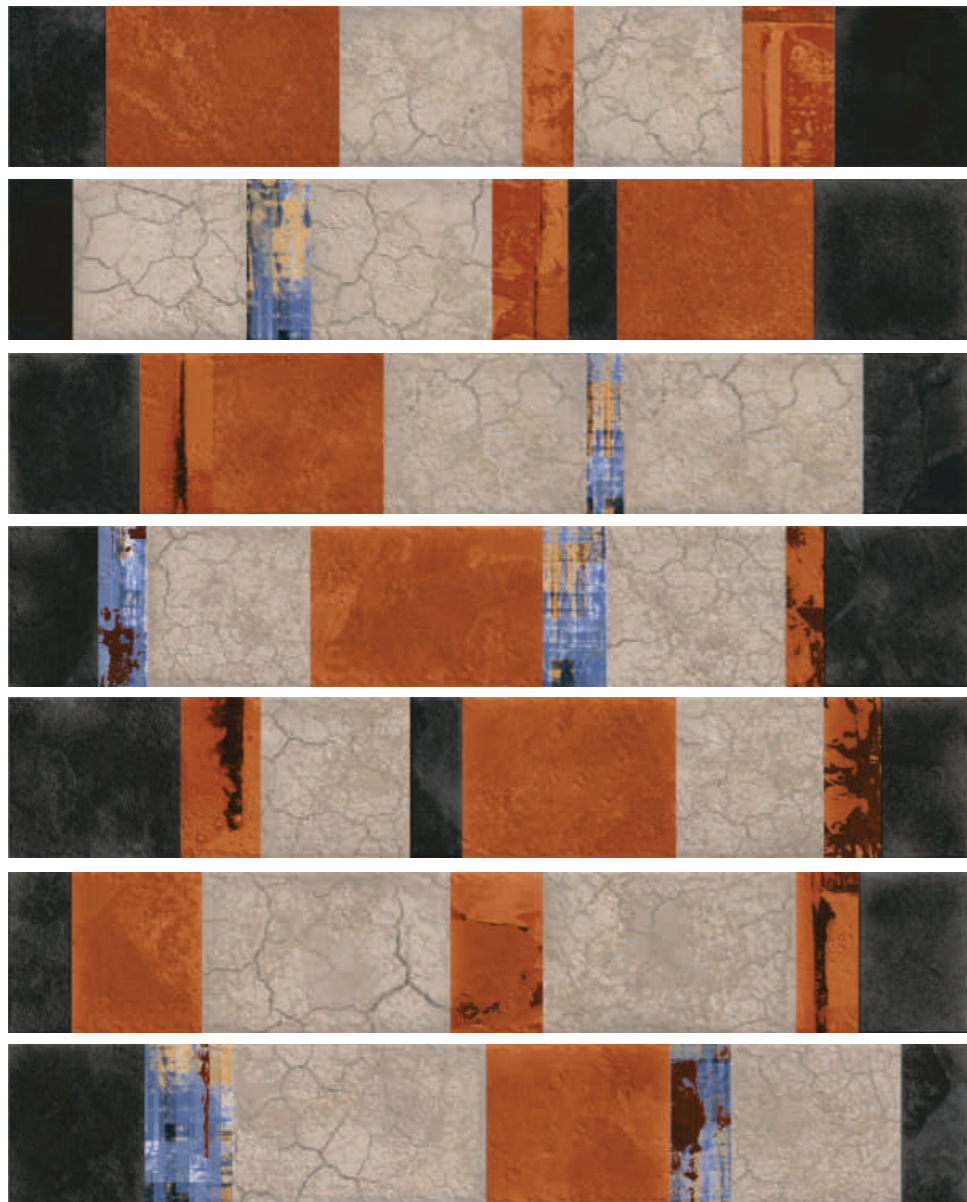
H

Nueva Arté Inspired Mexican Trend
 FORMAT: 15x90cm - PORCELAIN TILES





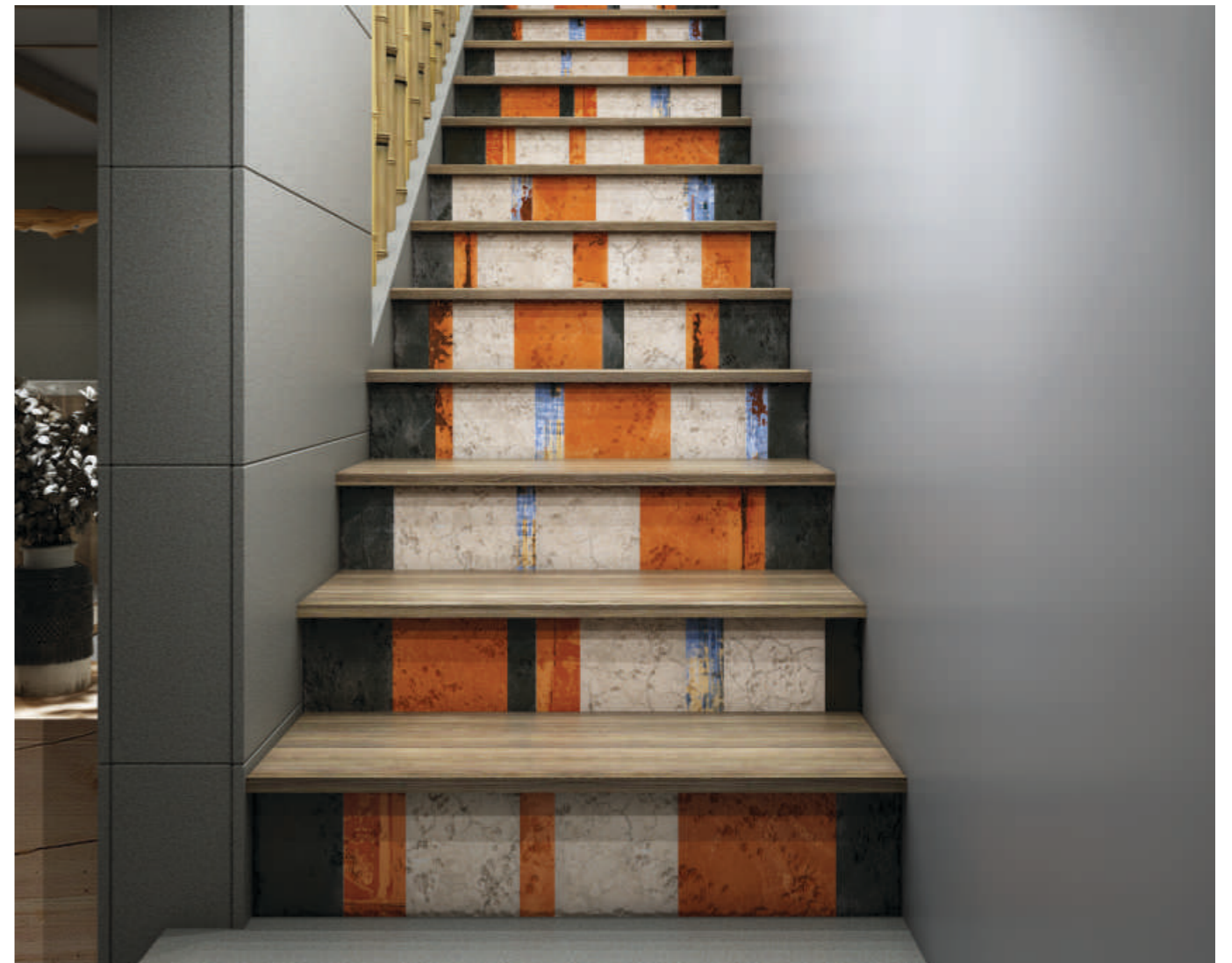
LOTTE



LOTTE



Nueva Arté Inspired Mexican Trend
FORMAT: **15x90cm** - PORCELAIN TILES



PACKING DETAILS

Sr. No.	Size	No. of Tiles Per Box	Coverage Area in Sq. Feet	Approx. Weight / Box
1	150x900mm	8	11.62sq.ft.	22kgs.

DISCLAIMER: Wooden Tiles reserves the right to delete & amend either totally or partially, any of the colors, shapes, sizes, references and other technical specifications contained in this catalogue at anytime, the colors shown of tiles in this catalogue are purely illustrative and limited to printing process, please refer actual sample before final selection, the details of sizes, colors, references should be verified for typographical errors.

LAYING INSTRUCTIONS

TILES FIXING INSTRUCTIONS

1. All the tiles must be checked prior to fixing for quality, batch no. and choice.
2. Plaster the surface of the floor to be tiled and allow curing atleast two weeks before tiling.
3. While fixing pick tiles from various boxes alternatively, lay them in the desired patterns and make sure that they give an acceptable blend of colour and design. Please note that shade variation is inherent in manufacturing tiles.
4. For fixing tiles we recommend to use the fixing adhesives or equivalent product for the best result.
5. For fixing tiles in floor using conventional method, we suggest the following laying instruction:
A: use cement and sand mortar in the ratio 1:4. Add water to create a consistent paste.
B: Apply 20-25MM of bedding materials over the floor area of 1.0SQM at a time.
C: Apply a thin coat of the slurry on the back of the tile to ensure proper and full bedding. Press gently for even adherence of the tiles with surface.
- Do not use any heavy materials like iron or hammer to press tile.
- 6: For fixing the tools on Dado, we recommend the use of adhesive or equivalent materials.
- 7: Allow 3-4 days of bed curing after laying tiles and later fill the joints with grout.
- 8: We recommend maintaining a joint gap of 1-2mm between the tiles to allow possible thermal expansion at later stage.
- 9: Please note that company will not accept any liability in case of any problems arising out of adherence of above fixing instructions.

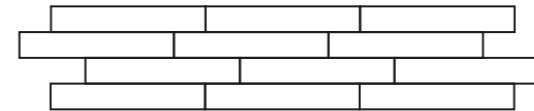
DISCLAIMER : reserves the right to delete and amend either totally or partially, any of the colours, shapes, sizes, references and other technical specifications contained in the catalogue at any time. The colours shown in this catalogue are purely illustrative and limited to printing process. Please refer actual samples before final selection. The details of colours, sizes and references should be verified for photography errors. SHADE & SIZE VARIATIONS are inherent characteristics of ceramics. NO COMPLAINTS SHALL BE ENTERTAINED ON TILES ALREADY/FIXED.

NOTES :

- * All technical specifications in this catalogue are for premium grade materials only.
- * SHADE/SIZE VARIATION are inherent characteristics to ceramics. Certain products purposely have variations that are the parts of designs and process. The same have been indicated.
- * It is recommended to blend tiles by mixing tiles from various boxes and check for natural hue before fixing.
- * Company's liability is also limited to the material supplied by the company; no other claim is entertained under any circumstances.
- * No complaints shall be entertained regarding the decoration on tiles.



Multi - Application Strips, it can be laid in following combination by unique and artistic way.



**TOUCH
HERE**

Laying
Instructions
Video



<https://youtu.be/RYpbBsyx0MU>

Helpful tips for better aesthetics look (Laying Instructions)

1. For better aesthetic value and for long term use, it is strongly recommended to provide 3 mm spacer in between the tiles. Without spacer, harmony of tiles might be disturbed.
2. Make sure that the design, pattern and the arrow marked on the back side of tiles must be in the same direction.
3. Any product from digitile must be installed (laid) in the same format. i.e. **150x900mm** size. For the particular series customized size application is not possible.

* THE COMPANY SHALL NOT BEAR ANY LIABILITY FOR THE PROBLEMS OUT OF NON-FULFILLMENT OF LAYING THE INSTRUCTIONS AS ABOVE.



SOUTHINDIATILES

159/1,159/2, Bashyakaralu Road East, R.S.Puram,
Coimbatore,Tamilnadu-641002

E-mail: info@southindiatiles.com | www.southindiatiles.com

Number :+91 7066666618