



DEEWAAR



CONTENT

CarbonCraft About Us Our Products	01
Sustainability Impact SDG's Why Us	05
Design Direction Solid Sculpted	09
Deewaar Slate Mono Contour	13
Slate Product Specifications Patterns Visualization	15
Mono Product Specifications Patterns Visualization	49
Contour Product Specifications Patterns Visualization	83
Carbon Wall Product Specifications Bespoke Patterns Visualization	111
Chromatics 12 Colour Shades	147
Technical Data	149
FAQ's	151
Installation Guide	153
Maintenance & Care	155

CARBON CRAFT

CONVERTING INDUSTRIAL REMNANTS TO BUILDING MATERIALS

At **CarbonCraft**, we are on a mission to combat climate change by developing various carbon negative building materials. We believe in constructing urban spaces with low carbon footprint materials, crafted from industrial byproducts. Our goal is to empower progressive Architects, designers, and builders to create beautiful, sustainable buildings using low carbon footprint materials that redefine construction for a better future.



Recycled
Materials



Impact



Design



Durable



Our product

DEEWAAR

WHERE WALLS BECOME ART,
& SURFACES NARRATE STORIES



=



One sq ft of
CarbonCraft Tile

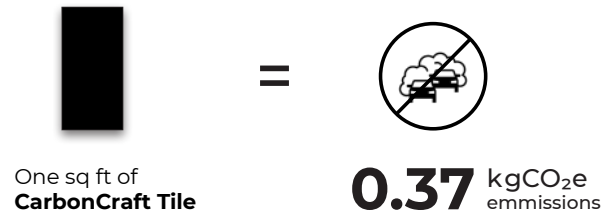
0.37 kgCO₂e
Emmissions



SUSTAINABILITY

ENVIRONMENTAL

Upcycling, design, and craftsmanship are at the heart of what we do. Beyond mere functionality, we aim to demonstrate that Industrial byproducts can be transformed into a valuable resource, unlocking a world of unexpected aesthetics, textures, and colours. Composed of at least 95% Industrial byproducts, Deewaar repurposes 1.9 kg of Industrial byproducts per square feet, redefining sustainability in design.



SOCIAL

Deewaar uplifts the livelihood of the local artisan families by using their generational know how of 200 year old handcrafting technique to solve new age problems like climate change which has been only been tried to solve through technology. Each mural is meticulously handcrafted with elegance, designed to craft decarbonization stories while offering a premium range of stunning, sustainable tiles.



Hand crafted



Local empowerment

SDG GOALS



CarbonCraft supports 200-year-old handcrafted and stencil-making traditions, fostering inclusive and productive employment opportunities for all.



Our ambitious vision is a circular world where industrial byproducts are synonymous with raw material: cities and their buildings are constructed of building materials that are made from 100% waste.



With our Deewaar wall range, we are focusing primarily on the use of industrial byproducts as resources instead of digging up natural and limited resources.

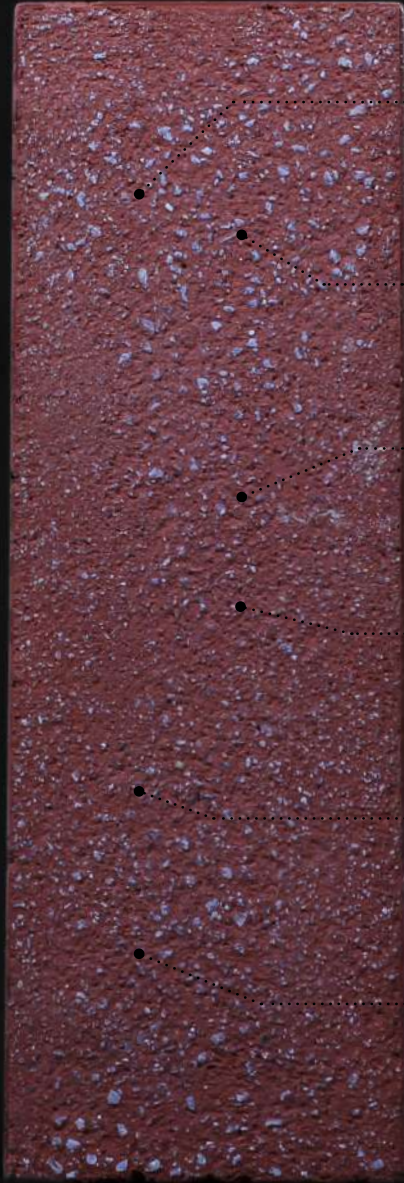


Ensuring sustainable production by deploying low energy intensive methods of tile making process and upcycling waste.



CarbonCraft's active efforts on utilising low-energy intensive technology and developing various carbon-negative building materials for combating climate change.

WHY USE CarbonCraft



Durable



Customisable



Affordable



Sustainable



Fire
Resistant



UV
Resistant

DESIGN DIRECTION

A Story of Stillness and Shift

In this curated dialogue of design, we explore the interplay between the enduring and the ever changing, where some forms stand firm in their silence, and others whisper stories through texture and transformation.

Solid :

Grounded in quiet confidence, Solid speaks of permanence. With its brick-like integrity and smooth, harmonious finish, it reflects strength in simplicity a surface that holds space with poised stillness, embodying the calm assurance of timeless design.

Sculpted :

Alive with texture, Sculpted captures the beauty of change. Its surface is a landscape of tactile impressions organic, flowing, and richly layered. It evokes the passage of time, inviting touch and telling tales of natural evolution, depth, and quiet motion.





SOLID

Stands as an enduring presence unshifting and composed, with a form that feels anchored in time. Its strength lies in its stillness, in the clarity of its mass and proportions. With a smooth, consistent surface and quiet confidence, it resists change, embodying a lasting quality that integrates seamlessly into modern or minimalist context.



SCULPTED

Inspired by the raw beauty of nature's landscapes, sculpted range brings warmth and tactile richness, echoing the charm of the earth's most serene spaces. With every piece showcasing the elegance of age and evolving over time, it adds depth and character. The natural imperfections and irregularities of stone's organic texture beautifully contrast with the sleek lines of modern architecture.

DEEWAAR

“Deewaar” transforms industrial byproducts into a beautiful canvas that narrates the decarbonisation story. Made from 95% industrial byproducts, these murals are handcrafted and offering bespoke finishes, colours, and shapes. Designed to be lightweight and slim, Deewaar provides endless customization options with a wide range of colours and finishes. The product stands out due to its innovative composition and the advanced techniques used to convert industrial byproducts into high-quality, consistent materials.

SLATE

SLATE brings timeless elegance with its sleek design, carefully crafted to enhance modern spaces, these combine the natural beauty of slate with a refined, minimalist aesthetic.

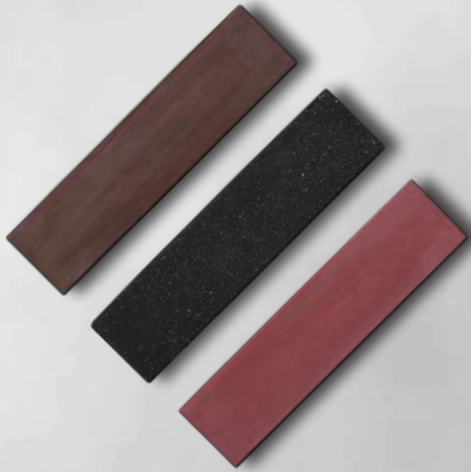
MONO

Showcasing its unique, flat & imperfect textures that improve with age. It pushes the boundaries of design, offering unparalleled flexibility & a sustainable edge for modern spaces.

CONTOUR

Inspired by the raw beauty of nature's landscapes, our Contour range brings warmth and tactile richness with its organic imperfections, adding depth and character to any space.





SLATE

Blends timeless elegance,
minimalist design for modern spaces

SLATE

Satin Matte

240 x 60 x 10mm



Delicately diffused, this finish balances softness and poise, like silk captured in stone.

Blast

240 x 60 x 10mm



Textured with intent, the blasted finish brings depth and drama to every surface.



Earthline

240 x 60 x 10mm

Deep earthy tones, with lines rising in quiet rhythm, drawing warmth from the earth and calm from the sky.



Technical Specifications

- Dimensions - 240 x 60 mm
- Thickness - 10 mm
- Pieces/sft - 7.5
- Pieces/Box - 68 (9.0Sft)
- Weight/Piece - 0.3 Kg
- Weight/Box - 21 Kg

Refer to Technical Master Sheet for the complete information about the product

Featured Colors

- Ruby - 
- Coral - 
- Storm - 
- Clay - 
- Cream - 
- Chocolate - 

The colours above represent the featured options for this specific tile. Please refer to the **Chromatics** for a full range of available colours.



Stone Poise

240 x 60 x 10mm

Dark lines rise in quiet rhythm, drawing the eye upward in structured stillness. Bathed in soft daylight, the facade stands composed, anchored like stone, yet light as shadow.




Technical Specifications

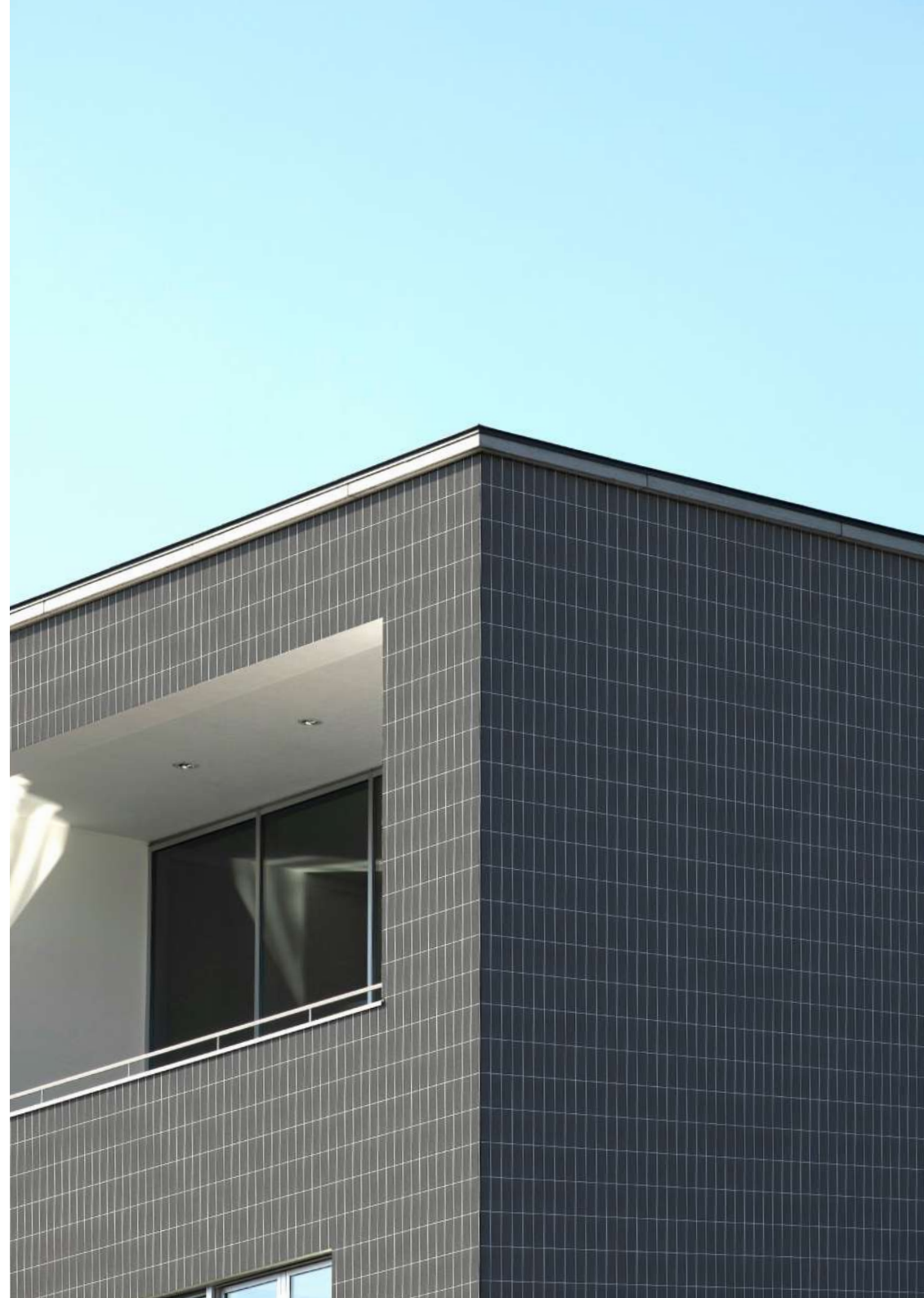
- Dimensions - 240 x 60 mm
- Thickness - 10 mm
- Pieces/sft - 7.5
- Pieces/Box - 68 (9.0sft)
- Weight/Piece - 0.3 Kg
- Weight/Box - 21 Kg

Refer to Technical Master Sheet for the complete information about the product

Featured Colors

- Ruby - 
- Coral - 
- Storm - 
- Clay - 
- Cream - 
- Chocolate - 

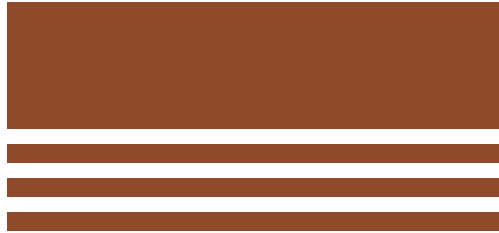
The colours above represent the featured options for this specific tile. Please refer to the **Chromatics** for a full range of available colours.



Tranquil Span

240 x 60 x 10mm

Burnt earth tones align with vertical grace, holding light in a gentle hold. A serene expanse reflects natural repose.



Technical Specifications

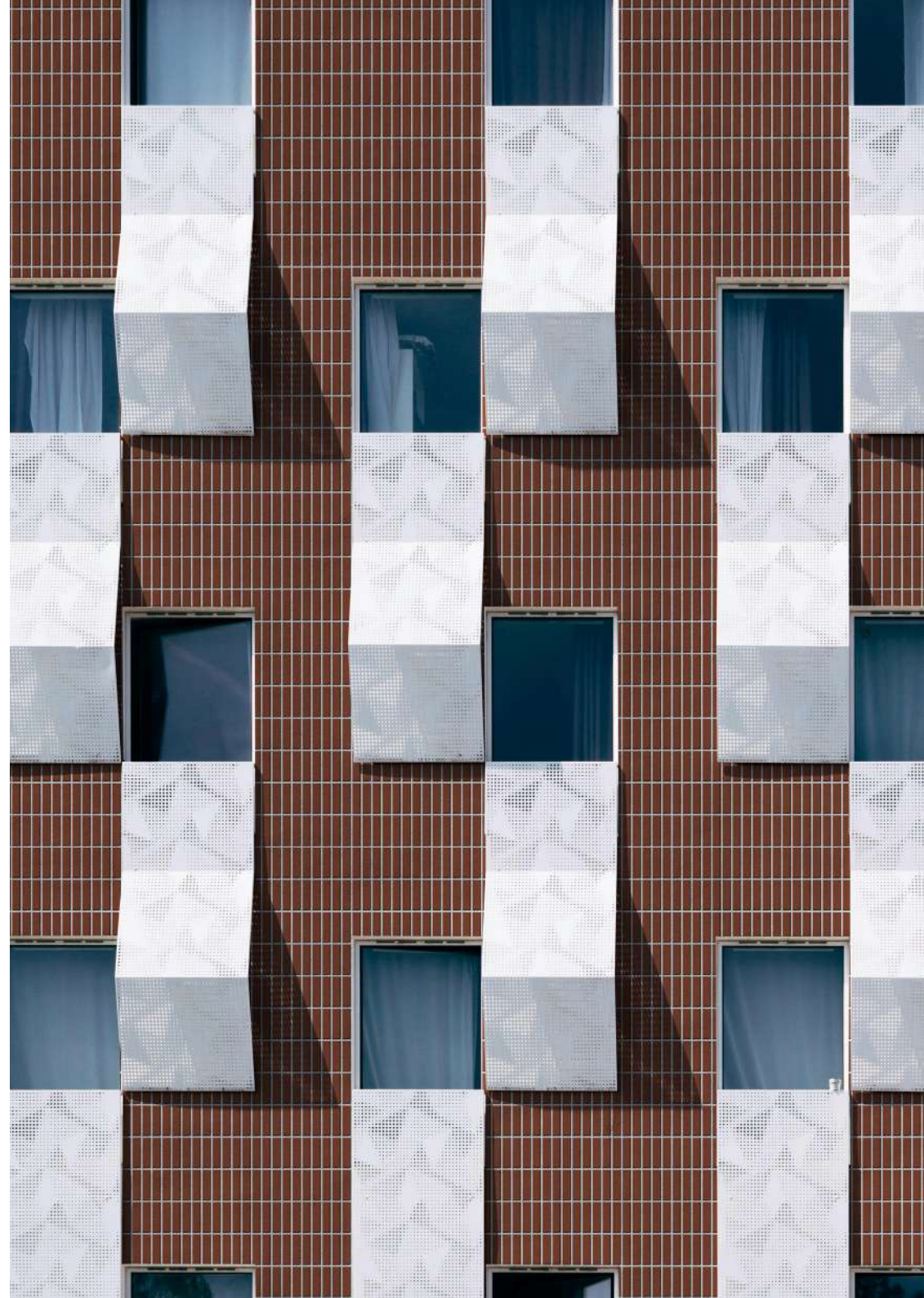
- Dimensions - 240 x 60 mm
- Thickness - 10 mm
- Pieces/sft - 7.5
- Pieces/Box - 68 (9.0sft)
- Weight/Piece - 0.3 Kg
- Weight/Box - 21 Kg

Refer to Technical Master Sheet for the complete information about the product

Featured Colors

- Ruby - 
- Coral - 
- Storm - 
- Clay - 
- Cream - 
- Chocolate - 

The colours above represent the featured options for this specific tile. Please refer to the **Chromatics** for a full range of available colours.



Soil Inward

240 x 60 x 10mm

A facade of restrained tones and smooth matte draws light inward with calm precision. The depth reflects fertile soil's quiet richness.



Technical Specifications

- Dimensions - 240 x 60 mm
- Thickness - 10 mm
- Pieces/sft - 7.5
- Pieces/Box - 68 (9.0sft)
- Weight/Piece - 0.3 Kg
- Weight/Box - 21 Kg

Refer to Technical Master Sheet for the complete information about the product

Featured Colors

- Ruby - 
- Coral - 
- Storm - 
- Clay - 
- Cream - 
- Chocolate - 

The colours above represent the featured options for this specific tile. Please refer to the **Chromatics** for a full range of available colours.



Pebble Composed

240 x 60 x 10mm

Vertical lines and muted hues settle into a tranquil surface. The harmony mirrors pebbles shaped by time.



Technical Specifications

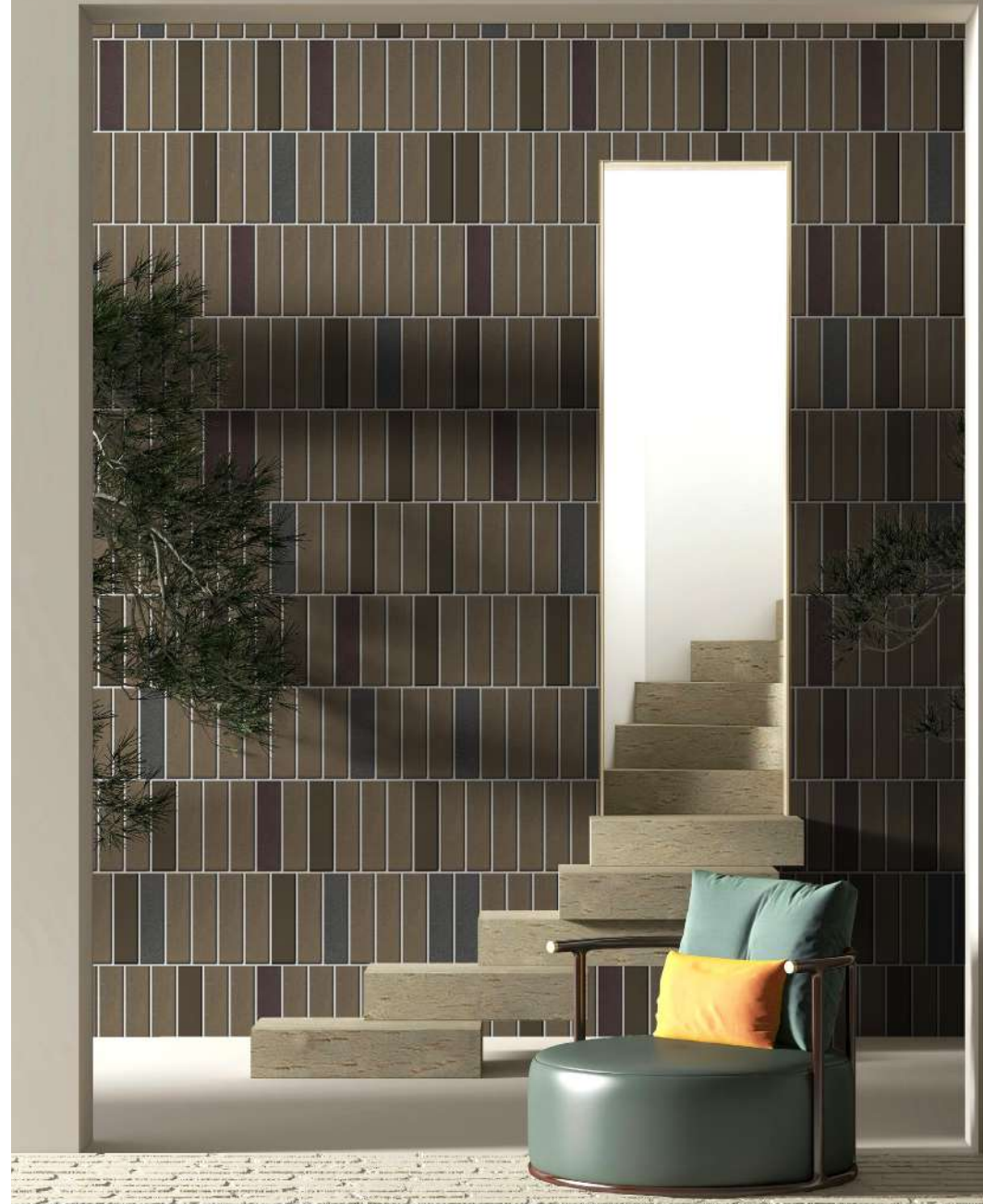
- Dimensions - 240 x 60 mm
- Thickness - 10 mm
- Pieces/sft - 7.5
- Pieces/Box - 68 (9.0sft)
- Weight/Piece - 0.3 Kg
- Weight/Box - 21 Kg

Refer to Technical Master Sheet for the complete information about the product

Featured Colors

- Ruby - 
- Coral - 
- Storm - 
- Clay - 
- Cream - 
- Chocolate - 

The colours above represent the featured options for this specific tile. Please refer to the **Chromatics** for a full range of available colours.



Settled Haven

240 x 60 x 10mm

Deep, muted tones rise with quiet strength, holding light in a calm embrace. A serene space takes shape with natural solidity.



Technical Specifications

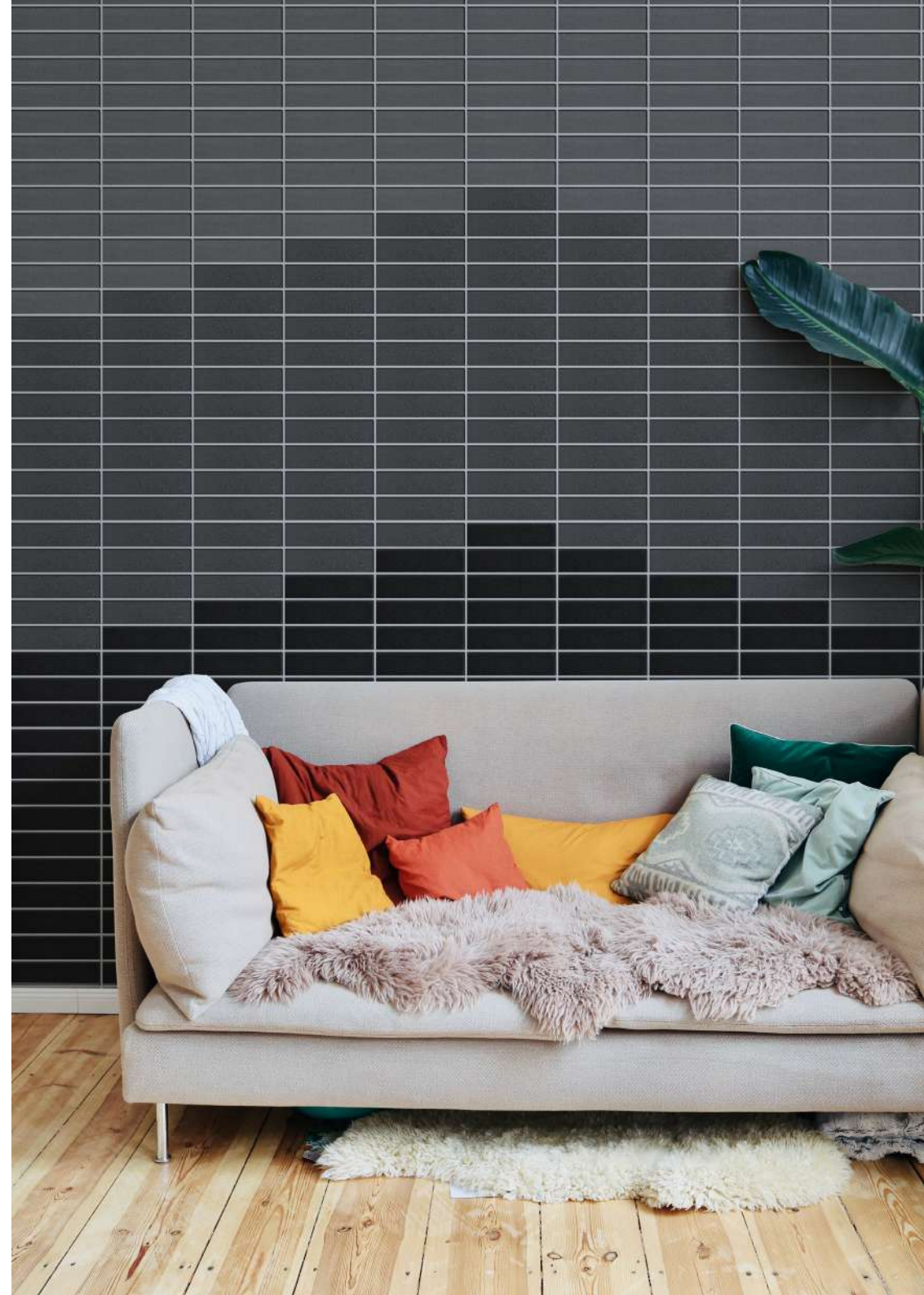
- Dimensions - 240 x 60 mm
- Thickness - 10 mm
- Pieces/sft - 7.5
- Pieces/Box - 68 (9.0sft)
- Weight/Piece - 0.3 Kg
- Weight/Box - 21 Kg

Refer to Technical Master Sheet for the complete information about the product

Featured Colors

- Ruby - 
- Coral - 
- Storm - 
- Clay - 
- Cream - 
- Chocolate - 

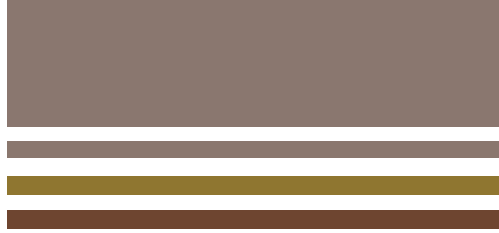
The colours above represent the featured options for this specific tile. Please refer to the **Chromatics** for a full range of available colours.



Terra Repose

240 x 60 x 10mm

Textured earthy shades frame the scene, absorbing light gently. A tranquil foundation emerges with warm undertones.



Technical Specifications

- Dimensions - 240 x 60 mm
- Thickness - 10 mm
- Pieces/sft - 7.5
- Pieces/Box - 68 (9.0sft)
- Weight/Piece - 0.3 Kg
- Weight/Box - 21 Kg

Refer to Technical Master Sheet for the complete information about the product

Featured Colors

- Ruby - 
- Coral - 
- Storm - 
- Clay - 
- Cream - 
- Chocolate - 

The colours above represent the featured options for this specific tile. Please refer to the **Chromatics** for a full range of available colours.



Serene

240 x 60 x 10mm

Vertical forms and Red tones balance in harmony. A subtle, lasting calm defines this composed elevation.



Technical Specifications

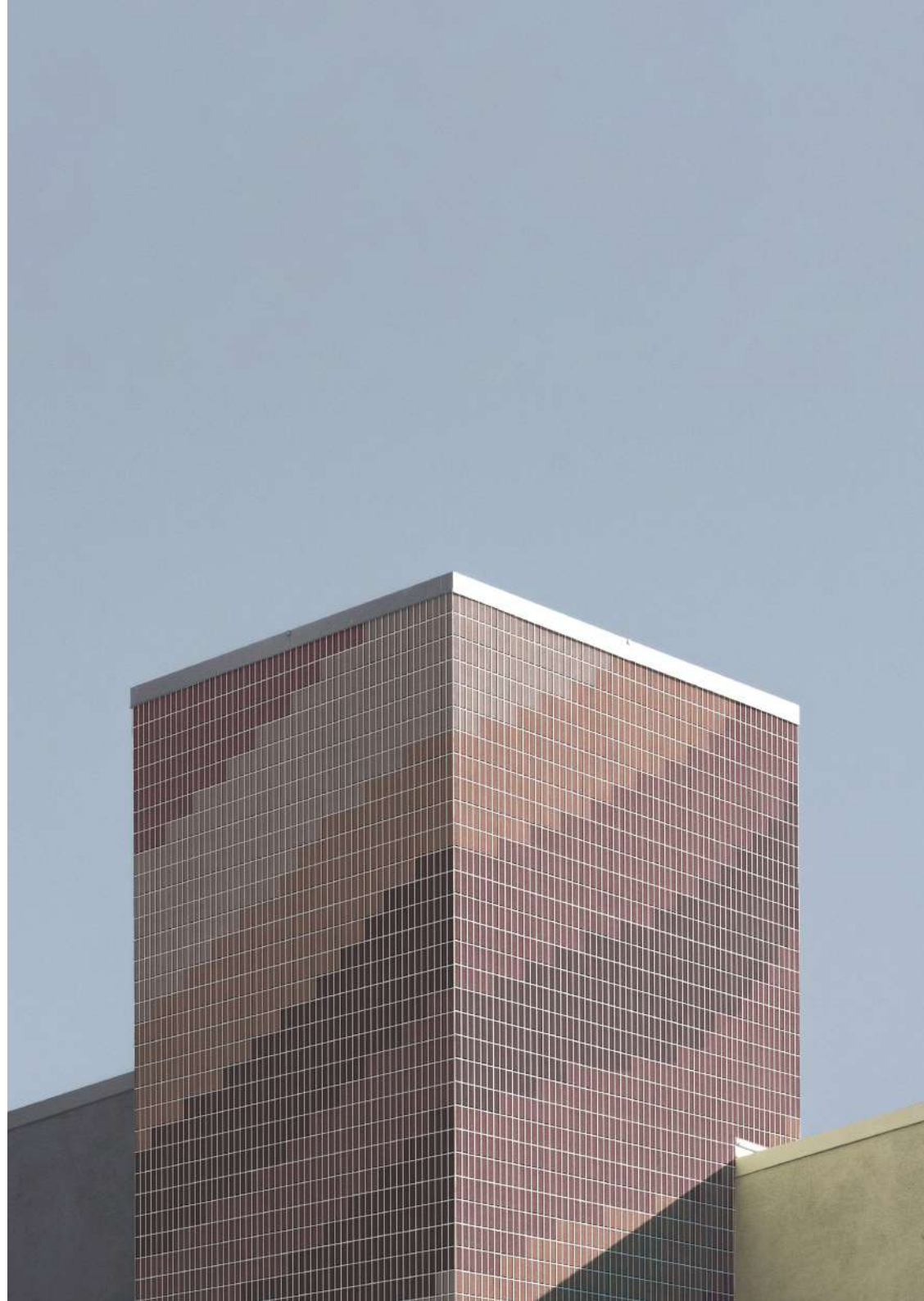
- Dimensions - 240 x 60 mm
- Thickness - 10 mm
- Pieces/sft - 7.5
- Pieces/Box - 68 (9.0Sft)
- Weight/Piece - 0.3 Kg
- Weight/Box - 21 Kg

Refer to Technical Master Sheet for the complete information about the product

Featured Colors

- Ruby - 
- Coral - 
- Storm - 
- Clay - 
- Cream - 
- Chocolate - 

The colours above represent the featured options for this specific tile. Please refer to the **Chromatics** for a full range of available colours.



Hushed Depths

240 x 60 x 10mm

Subdued hues and soft, matte textures gently guide light inward with tranquil accuracy.



Technical Specifications

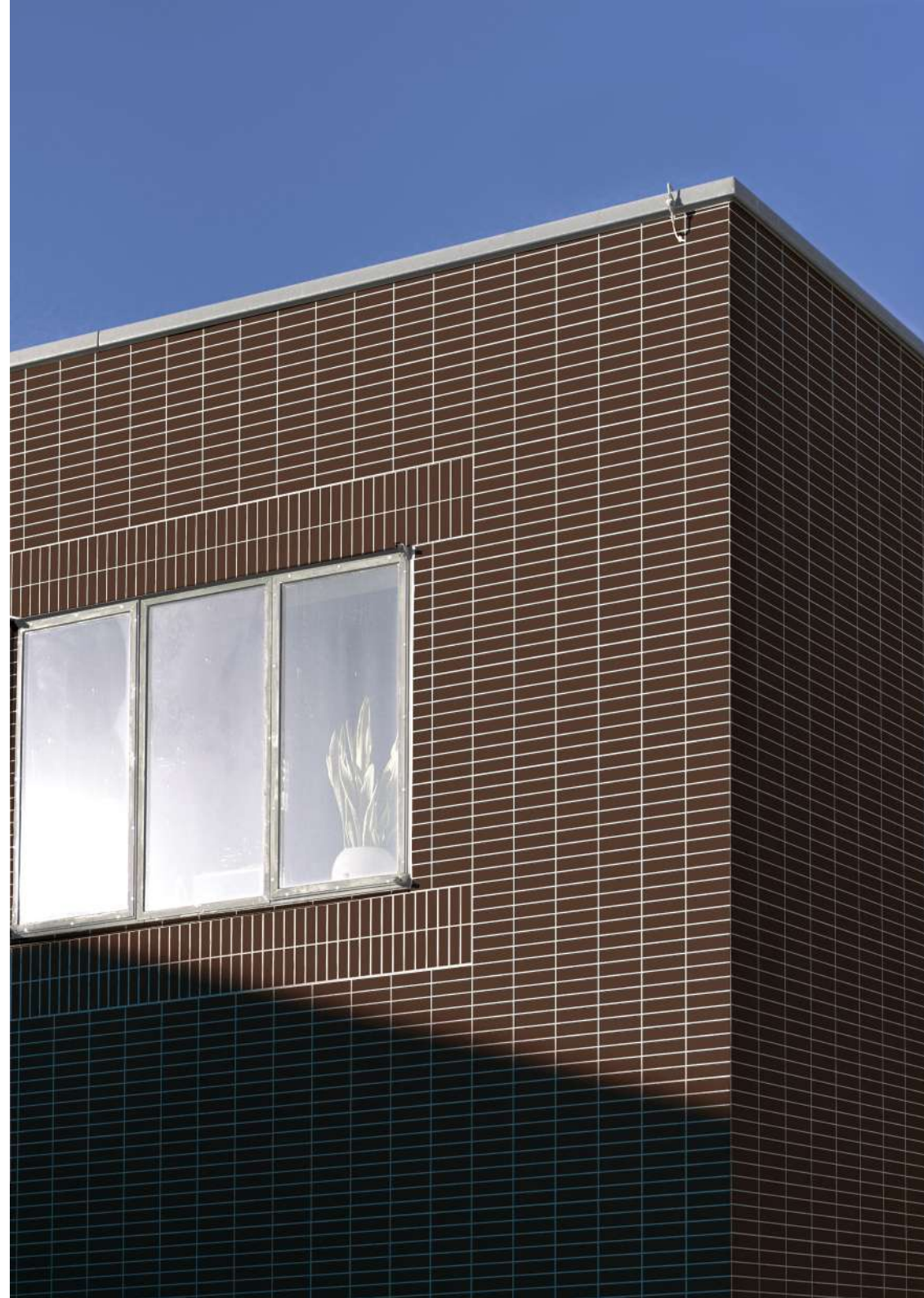
- Dimensions - 240 x 60 mm
- Thickness - 10 mm
- Pieces/sft - 7.5
- Pieces/Box - 68 (9.0sft)
- Weight/Piece - 0.3 Kg
- Weight/Box - 21 Kg

Refer to Technical Master Sheet for the complete information about the product

Featured Colors

- Ruby - 
- Coral - 
- Storm - 
- Clay - 
- Cream - 
- Chocolate - 

The colours above represent the featured options for this specific tile. Please refer to the **Chromatics** for a full range of available colours.



Anchored Vista

240 x 60 x 10mm

Grey shades and structured lines frame the scene, absorbing light with ease. A calm perspective hints at a rooted stillness.




Technical Specifications

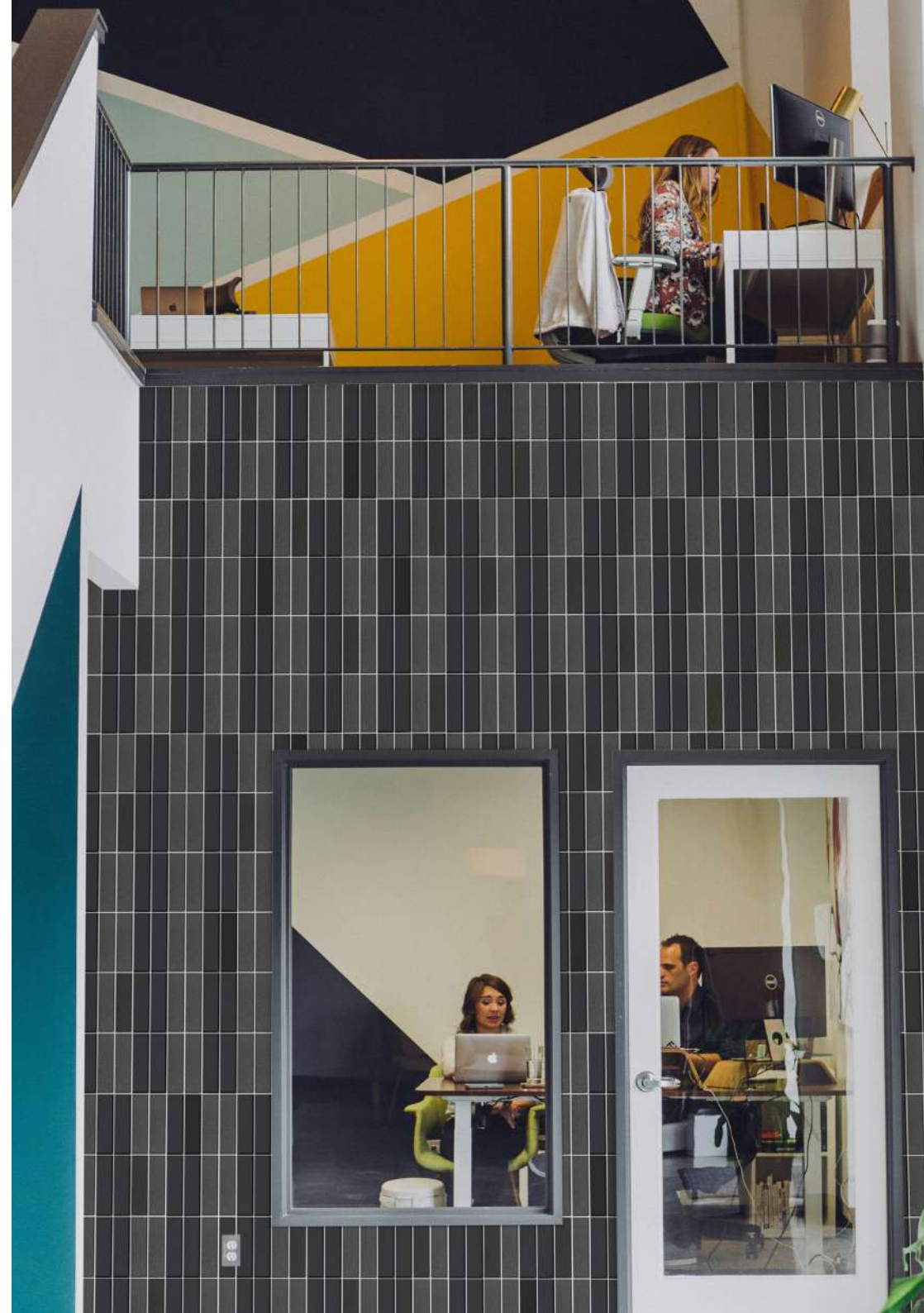
- Dimensions - 240 x 60 mm
- Thickness - 10 mm
- Pieces/sft - 7.5
- Pieces/Box - 68 (9.0sft)
- Weight/Piece - 0.3 Kg
- Weight/Box - 21 Kg

Refer to Technical Master Sheet for the complete information about the product

Featured Colors

- Ruby - 
- Coral - 
- Storm - 
- Clay - 
- Cream - 
- Chocolate - 

The colours above represent the featured options for this specific tile. Please refer to the **Chromatics** for a full range of available colours.



Subdued Refuge

240 x 60 x 10mm

Vertical lines and muted hues stand in tranquil harmony. A subtle, enduring calm defines this composed shelter.



Technical Specifications

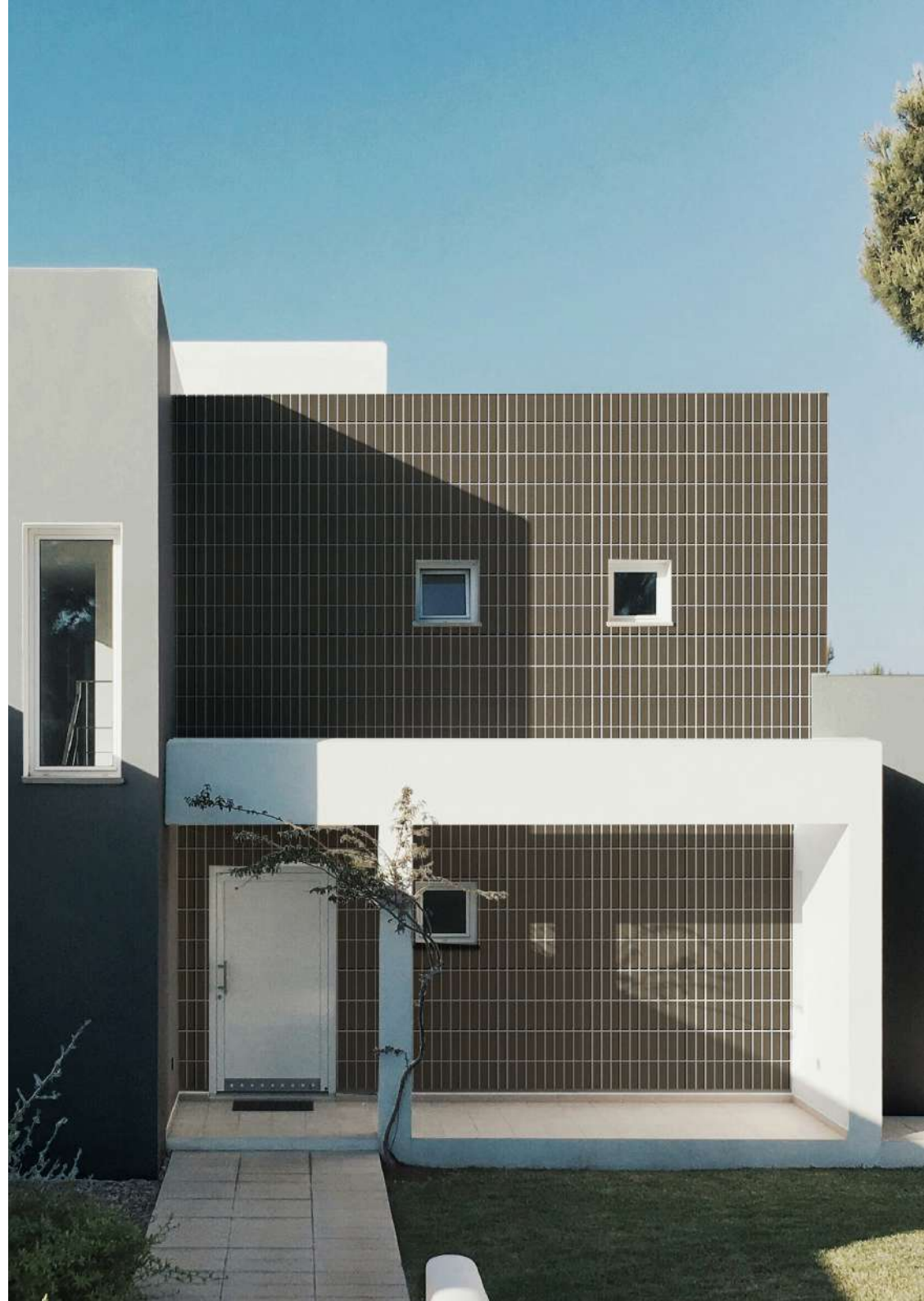
- Dimensions - 240 x 60 mm
- Thickness - 10 mm
- Pieces/sft - 7.5
- Pieces/Box - 68 (9.0sft)
- Weight/Piece - 0.3 Kg
- Weight/Box - 21 Kg

Refer to Technical Master Sheet for the complete information about the product

Featured Colors

- Ruby - 
- Coral - 
- Storm - 
- Clay - 
- Cream - 
- Chocolate - 

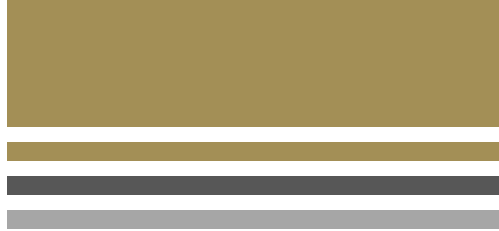
The colours above represent the featured options for this specific tile. Please refer to the **Chromatics** for a full range of available colours.



Muted Contrast

240 x 60 x 10mm

Soft pastels and deep charcoals dance in quiet harmony, where colour meets form in a serene architectural moment.



Technical Specifications

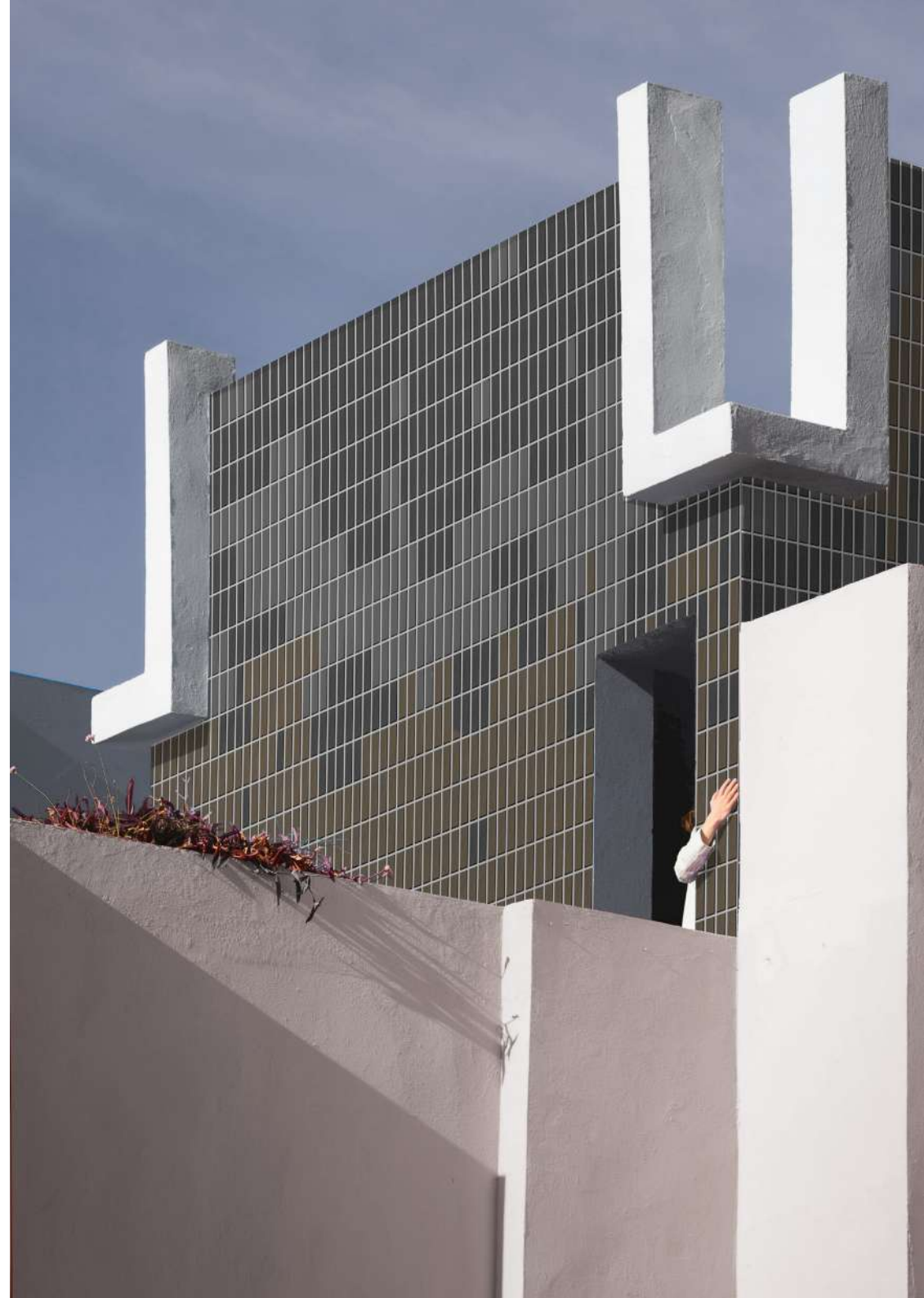
- Dimensions - 240 x 60 mm
- Thickness - 10 mm
- Pieces/sft - 7.5
- Pieces/Box - 68 (9.0sft)
- Weight/Piece - 0.3 Kg
- Weight/Box - 21 Kg

Refer to Technical Master Sheet for the complete information about the product

Featured Colors

- Ruby - 
- Coral - 
- Storm - 
- Clay - 
- Cream - 
- Chocolate - 

The colours above represent the featured options for this specific tile. Please refer to the **Chromatics** for a full range of available colours.



Gentle Ascent

240 x 60 x 10mm

Warm, earthy tones rise with steady grace, holding light in a calm embrace. A tranquil height reflects a subtle, grounded stillness.



Technical Specifications

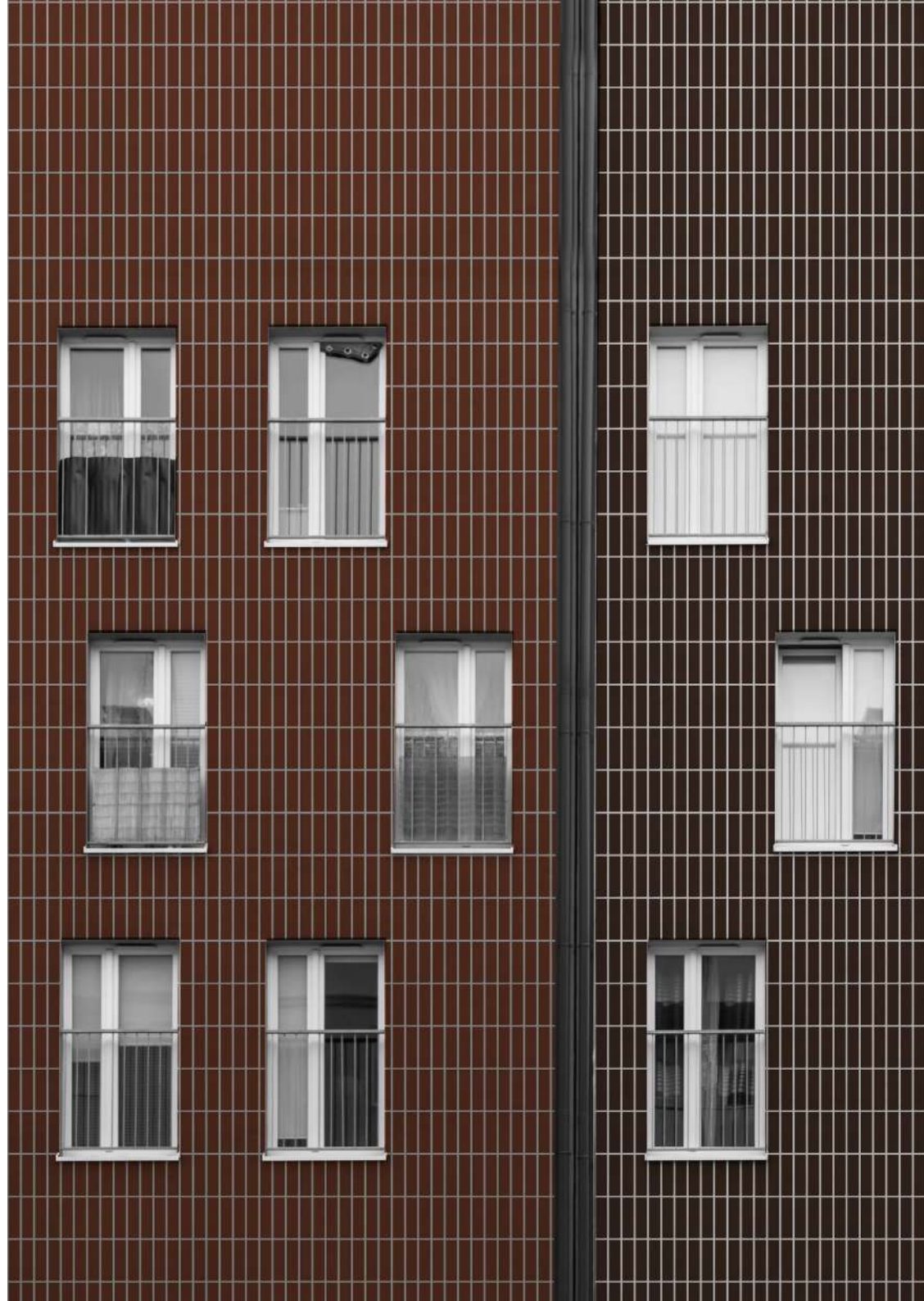
- Dimensions - 240 x 60 mm
- Thickness - 10 mm
- Pieces/sft - 7.5
- Pieces/Box - 68 (9.0sft)
- Weight/Piece - 0.3 Kg
- Weight/Box - 21 Kg

Refer to Technical Master Sheet for the complete information about the product

Featured Colors

- Ruby - 
- Coral - 
- Storm - 
- Clay - 
- Cream - 
- Chocolate - 

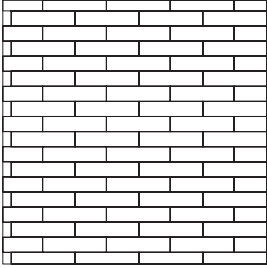
The colours above represent the featured options for this specific tile. Please refer to the **Chromatics** for a full range of available colours.



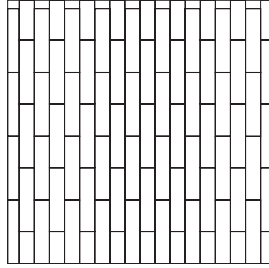


Design Aggregation

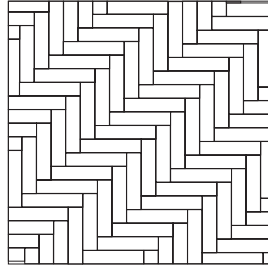
Running Bond



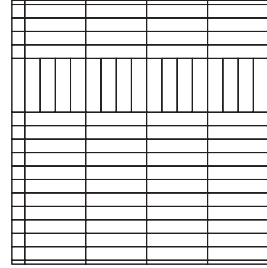
Soldier



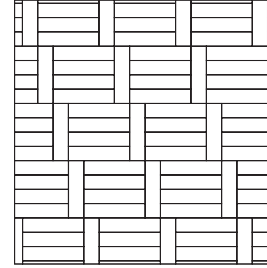
90° Herringbone



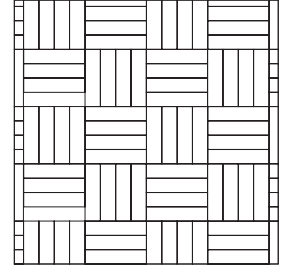
V Lintel



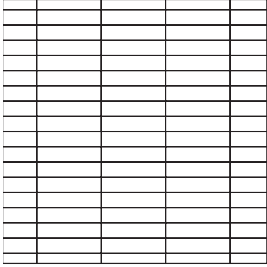
V Checker



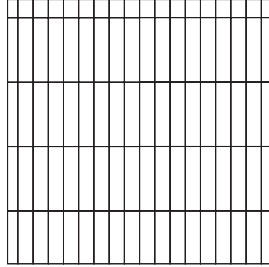
Basket Weave



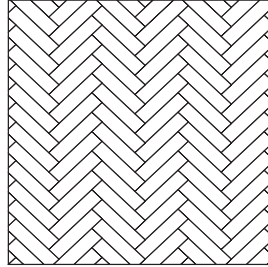
H Stack



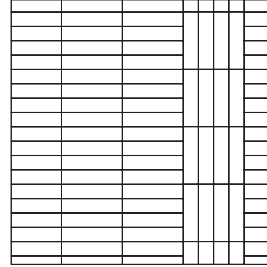
V Stack



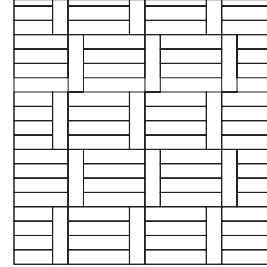
45° Herringbone



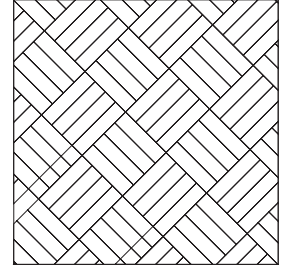
V Column



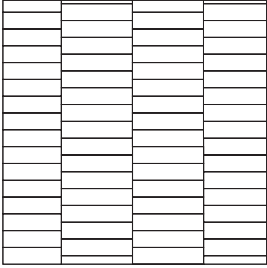
V Wave



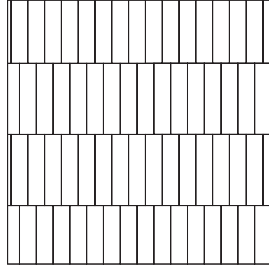
45° Basket Weave



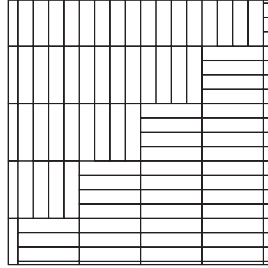
H Step



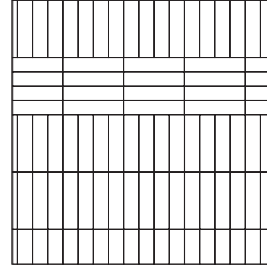
V Step



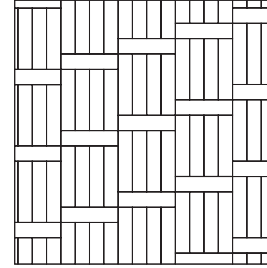
Triple Herringbone



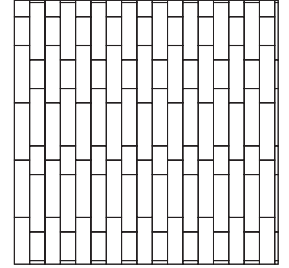
H Lintel



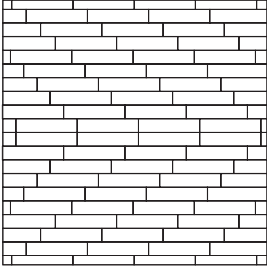
H Checker



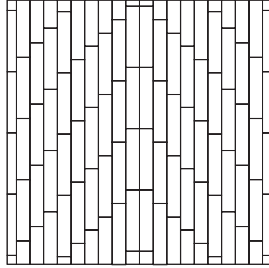
90° Flemish Bond



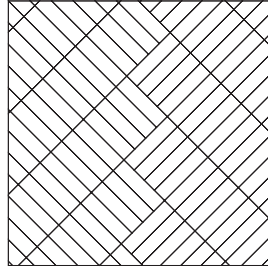
H Parquet



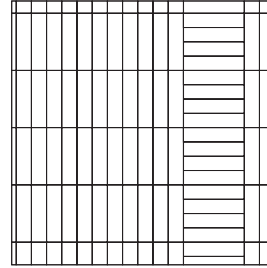
V Parquet



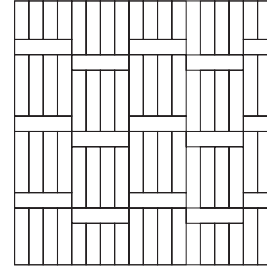
45° Triple Herringbone



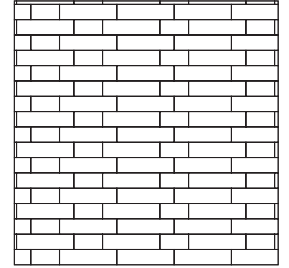
H Column

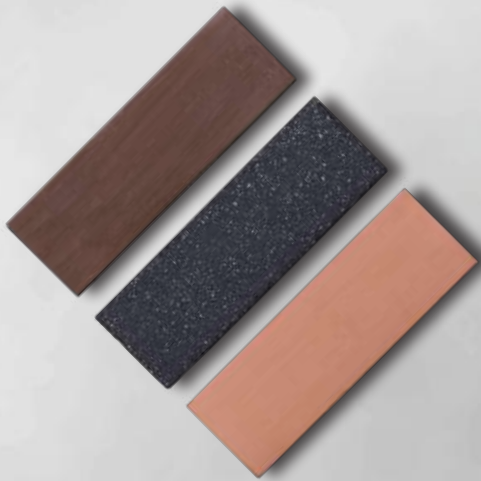


H Wave



Flemish Bond





MONO

Solid yet adds visual depths,
Ensuring striking surfaces without repetition.



MONO

Satin Matte

225 x 75 x 10mm



Delicately diffused, this finish balances softness and poise, like silk captured in stone.

Blast

225 x 75 x 10mm



Textured with intent, the blasted finish brings depth and drama to every surface.



Echoes of Foliage

225 x 75 x 10mm

Earthy olive and soft concrete tones frame a quiet trio of potted greens, where colour breathes calm into structured rhythm.



Technical Specifications

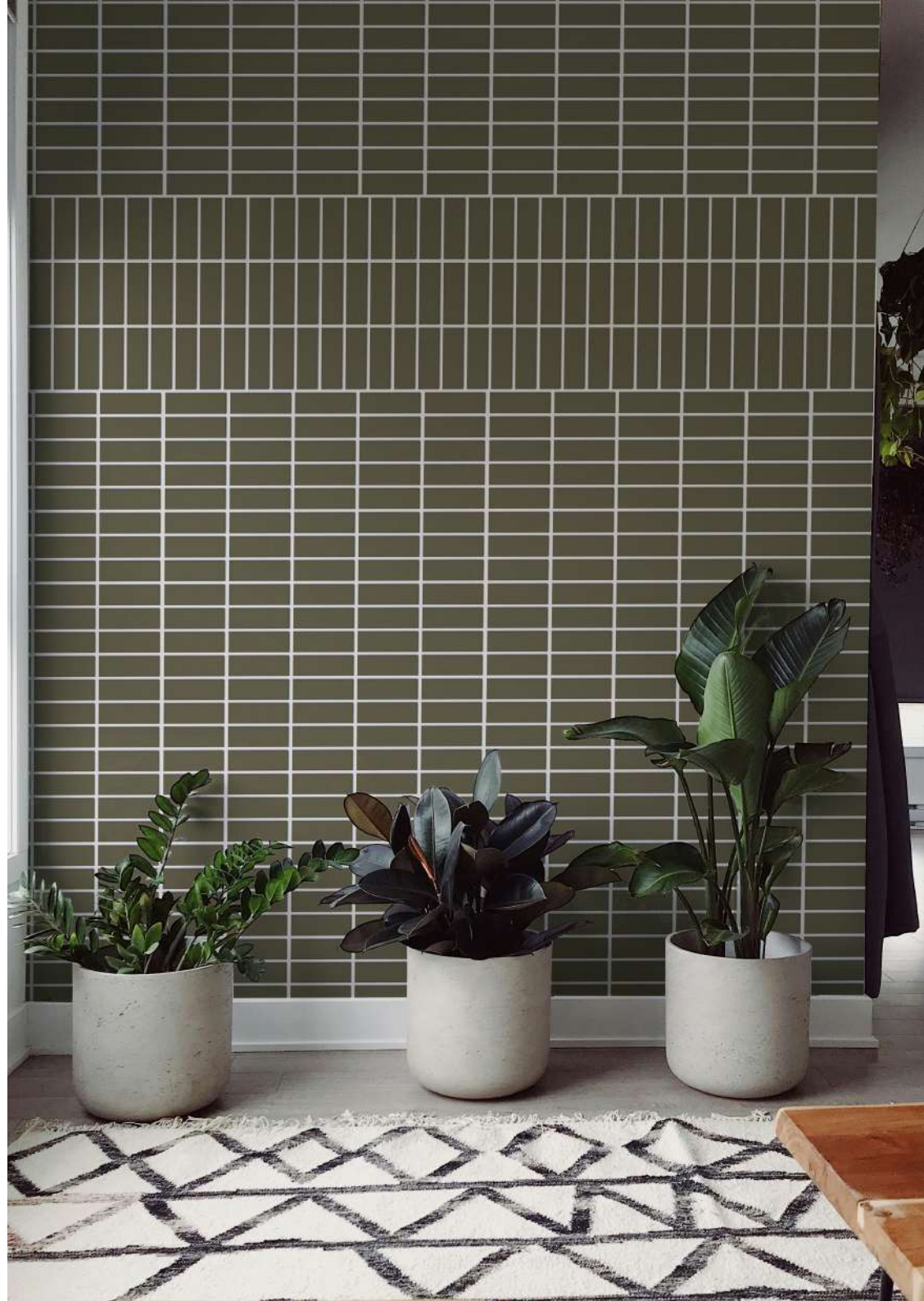
- Dimensions - 225 x 75 mm
- Thickness - 10 mm
- Pieces/sft - 5.5
- Pieces/Box - 68 (12.5sft)
- Weight/Piece - 0.35 Kg
- Weight/Box - 24 Kg

Refer to Technical Master Sheet for the complete information about the product

Featured Colors

- Ruby - 
- Coral - 
- Fern - 
- Clay - 
- Cream - 
- Chocolate - 

The colours above represent the featured options for this specific tile. Please refer to the **Chromatics** for a full range of available colours.



Terra Allure

225 x 75 x 10mm

Warm, natural hues and textured surfaces shape a warm grounded, inviting entryway.



Technical Specifications

- Dimensions - 225 x 75 mm
- Thickness - 10 mm
- Pieces/sft - 5.5
- Pieces/Box - 68 (12.5sft)
- Weight/Piece - 0.35 Kg
- Weight/Box - 24 Kg

Refer to Technical Master Sheet for the complete information about the product

Featured Colors

- Ruby - 
- Coral - 
- Fern - 
- Clay - 
- Cream - 
- Chocolate - 

The colours above represent the featured options for this specific tile. Please refer to the **Chromatics** for a full range of available colours.



Terrene Form

225 x 75 x 10mm

Deep, soil-inspired shades anchor the modern form to its natural surroundings, creating a quiet harmony between built structure and the earth it rises from.



Technical Specifications

- Dimensions - 225 x 75 mm
- Thickness - 10 mm
- Pieces/sft - 5.5
- Pieces/Box - 68 (12.5sft)
- Weight/Piece - 0.35 Kg
- Weight/Box - 24 Kg

Refer to Technical Master Sheet for the complete information about the product

Featured Colors

- Ruby - 
- Coral - 
- Fern - 
- Clay - 
- Cream - 
- Chocolate - 

The colours above represent the featured options for this specific tile. Please refer to the **Chromatics** for a full range of available colours.



Soil & Silence

225 x 75 x 10mm

A quiet, earthy palette brings warmth and stillness to this serene interior.



Technical Specifications

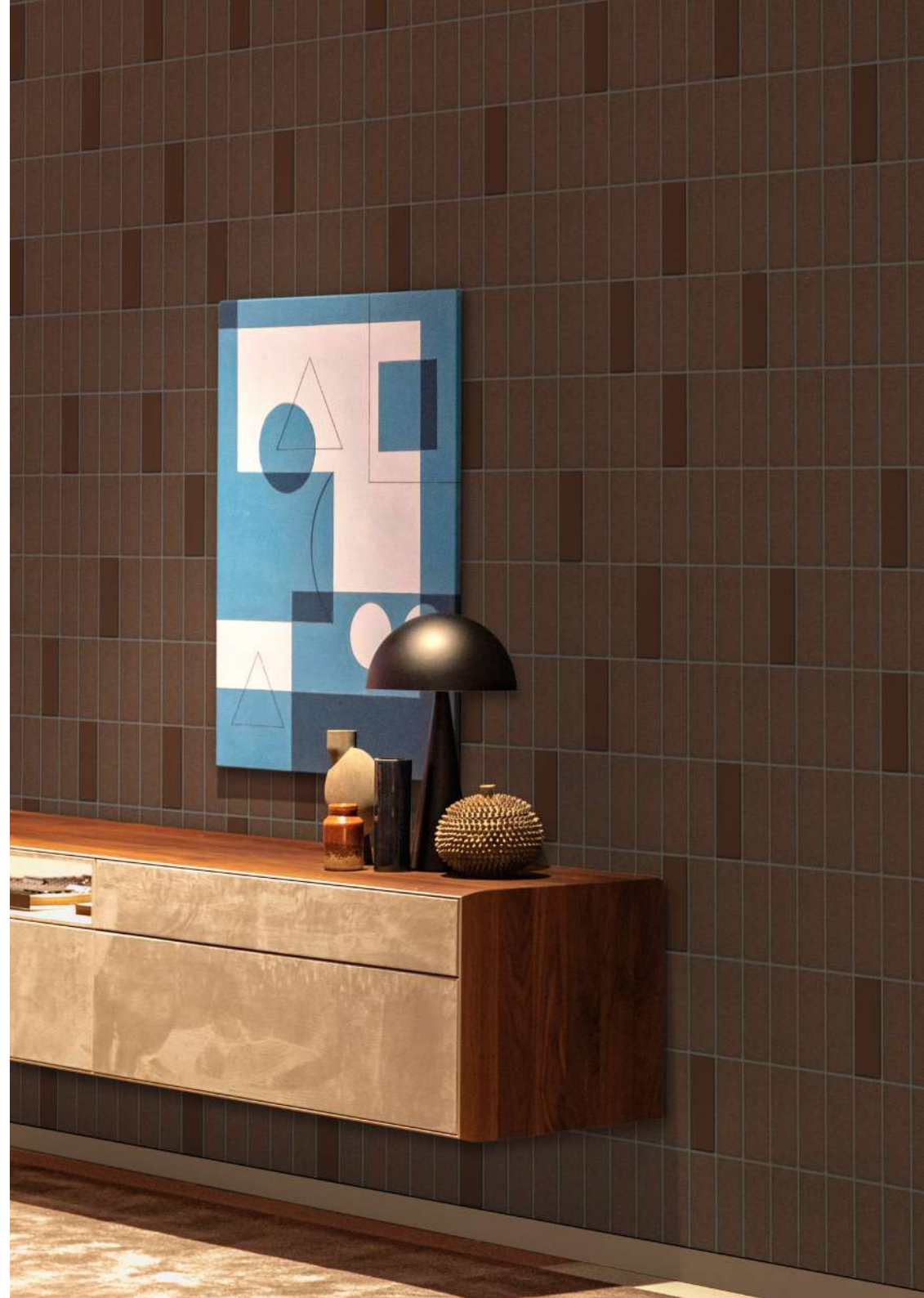
- Dimensions - 225 x 75 mm
- Thickness - 10 mm
- Pieces/sft - 5.5
- Pieces/Box - 68 (12.5sft)
- Weight/Piece - 0.35 Kg
- Weight/Box - 24 Kg

Refer to Technical Master Sheet for the complete information about the product

Featured Colors

- Ruby - 
- Coral - 
- Fern - 
- Clay - 
- Cream - 
- Chocolate - 

The colours above represent the featured options for this specific tile. Please refer to the **Chromatics** for a full range of available colours.



Layered Terrain

225 x 75 x 10mm

An interplay of warm, grounded tones brings a sense of balance and crafted simplicity to the space.



Technical Specifications

- Dimensions - 225 x 75 mm
- Thickness - 10 mm
- Pieces/sft - 5.5
- Pieces/Box - 68 (12.5sft)
- Weight/Piece - 0.35 Kg
- Weight/Box - 24 Kg

Refer to the Technical Master Sheet for the complete information about the product

Featured Colors

- Ruby - 
- Coral - 
- Fern - 
- Clay - 
- Cream - 
- Chocolate - 

The colours above represent the featured options for this specific tile. Please refer to the **Chromatics** for a full range of available colours.



Stone Pulse

225 x 75 x 10mm

Cool, stone-like shades form a textured rhythm, grounding the façade with a quiet urban energy.



Technical Specifications

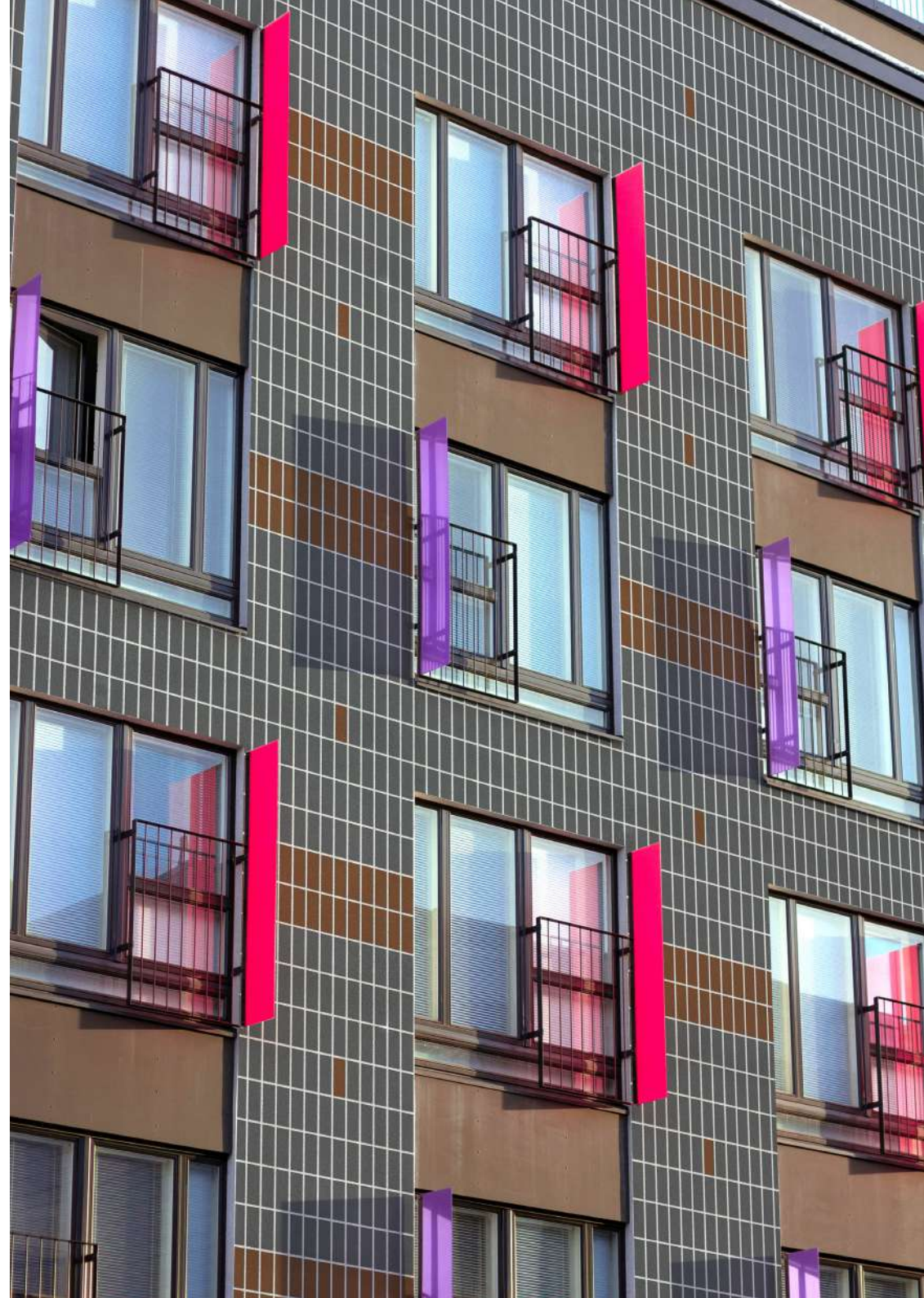
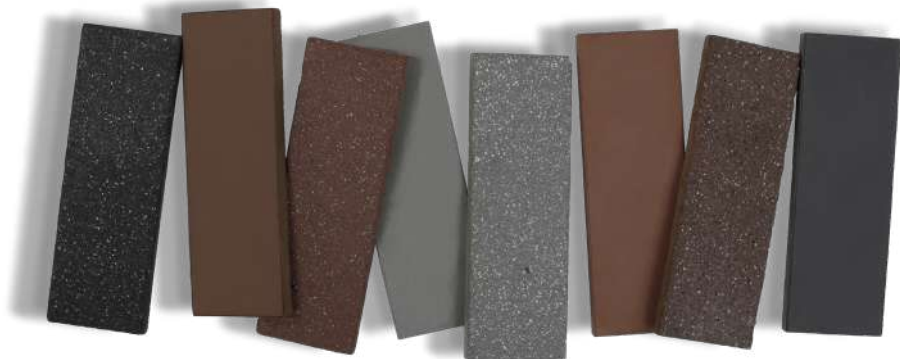
- Dimensions - 225 x 75 mm
- Thickness - 10 mm
- Pieces/sft - 5.5
- Pieces/Box - 68 (12.5sft)
- Weight/Piece - 0.35 Kg
- Weight/Box - 24 Kg

Refer to Technical Master Sheet for the complete information about the product

Featured Colors

- Ruby -
- Coral -
- Fern -
- Clay -
- Cream -
- Chocolate -

The colours above represent the featured options for this specific tile. Please refer to the **Chromatics** for a full range of available colours.



Harvest Grid

225 x 75 x 10mm

A mosaic of sun-warmed tones and structured lines evokes cultivated land seen from above ordered, organic, and full of quiet energy.



Technical Specifications

- Dimensions - 225 x 75 mm
- Thickness - 10 mm
- Pieces/sft - 5.5
- Pieces/Box - 68 (12.5sft)
- Weight/Piece - 0.35 Kg
- Weight/Box - 24 Kg

Refer to Technical Master Sheet for the complete information about the product

Featured Colors

- Ruby - 
- Coral - 
- Fern - 
- Clay - 
- Cream - 
- Chocolate - 

The colours above represent the featured options for this specific tile. Please refer to the **Chromatics** for a full range of available colours.



Vertical Canopy

225 x 75 x 10mm

Soft, soil-toned surfaces rise gently into the sky, echoing the calm of nature in vertical form.



Technical Specifications

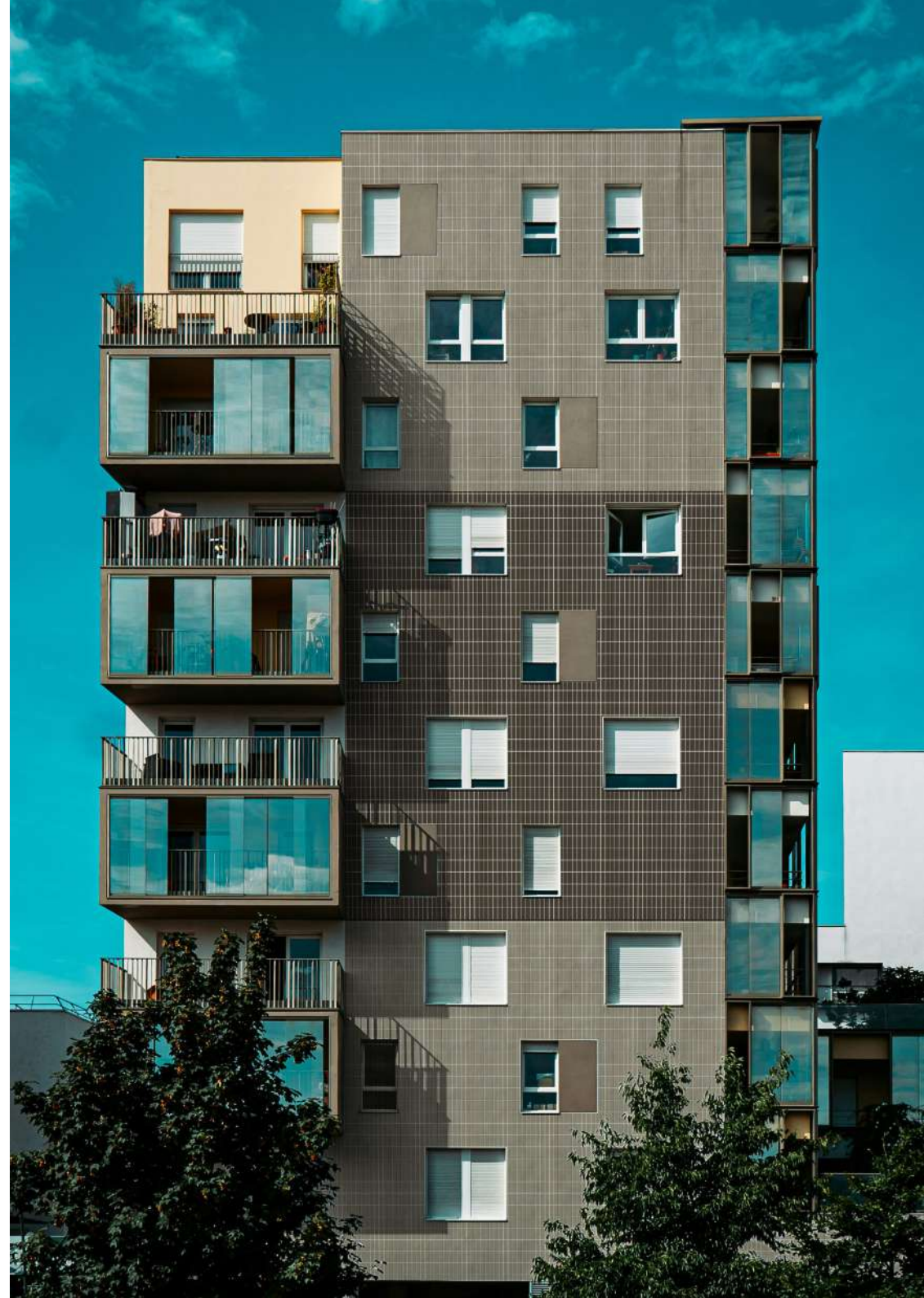
- Dimensions - 225 x 75 mm
- Thickness - 10 mm
- Pieces/sft - 5.5
- Pieces/Box - 68 (12.5sft)
- Weight/Piece - 0.35 Kg
- Weight/Box - 24 Kg

Refer to Technical Master Sheet for the complete information about the product

Featured Colors

- Ruby - 
- Coral - 
- Fern - 
- Clay - 
- Cream - 
- Chocolate - 

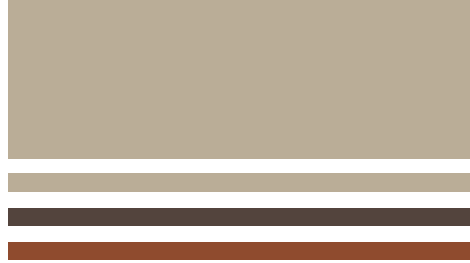
The colours above represent the featured options for this specific tile. Please refer to the **Chromatics** for a full range of available colours.



Patterned Harmony

225 x 75 x 10mm

A scattered pattern of earth toned tiles creates a soft, sun washed facade that feels both organic and architectural.



Technical Specifications

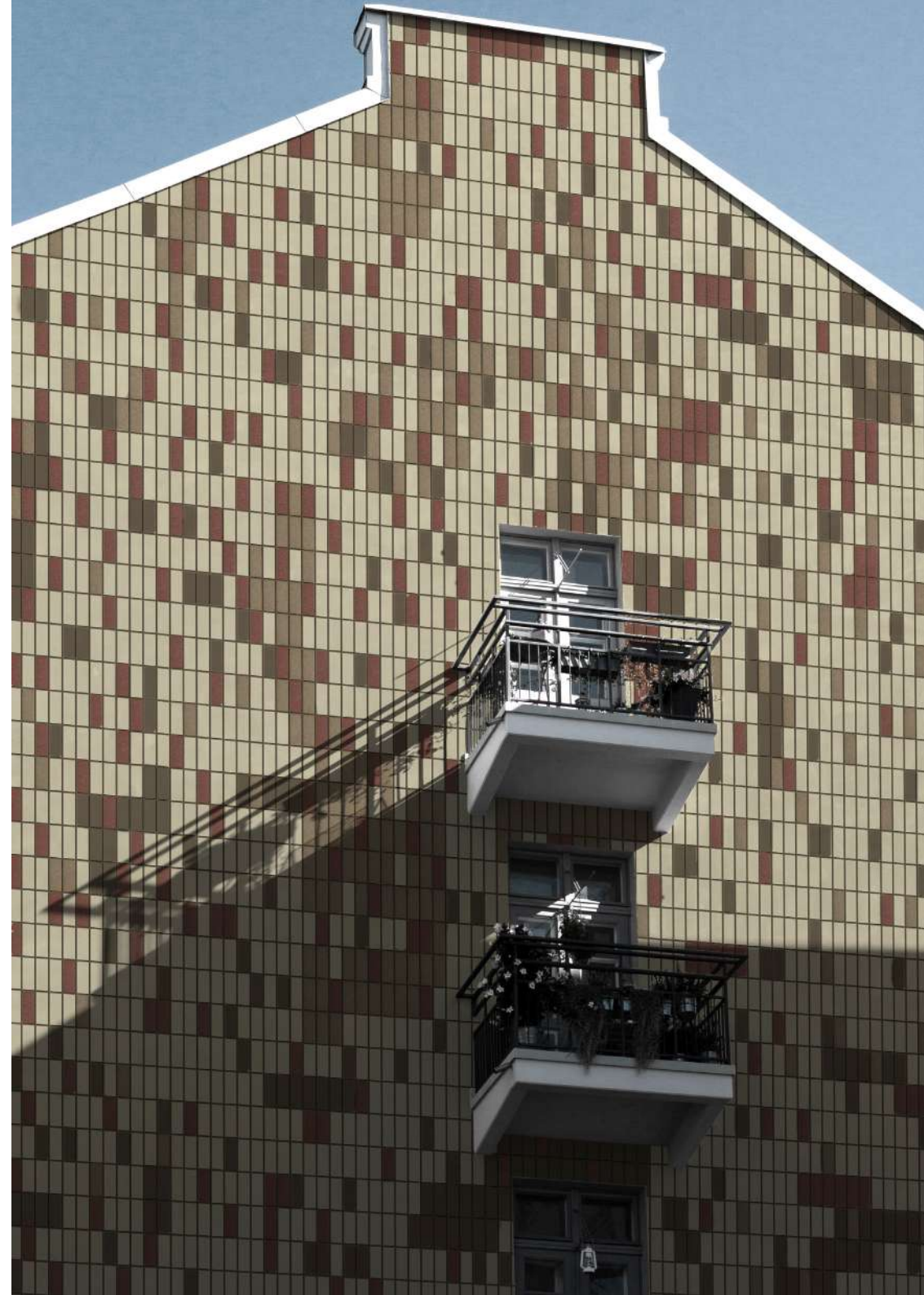
- Dimensions - 225 x 75 mm
- Thickness - 10 mm
- Pieces/sft - 5.5
- Pieces/Box - 68 (12.5sft)
- Weight/Piece - 0.35 Kg
- Weight/Box - 24 Kg

Refer to Technical Master Sheet for the complete information about the product

Featured Colors

- Ruby - 
- Coral - 
- Fern - 
- Clay - 
- Cream - 
- Chocolate - 

The colours above represent the featured options for this specific tile. Please refer to the **Chromatics** for a full range of available colours.



Earthen Portal

225 x 75 x 10mm

The rich, grounded surface frames the window like a moment in time, echoing the warmth and stillness of sunbaked earth.



Technical Specifications

- Dimensions - 225 x 75 mm
- Thickness - 10 mm
- Pieces/sft - 5.5
- Pieces/Box - 68 (12.5sft)
- Weight/Piece - 0.35 Kg
- Weight/Box - 24 Kg

Refer to Technical Master Sheet for the complete information about the product

Featured Colors

- Ruby - 
- Coral - 
- Fern - 
- Clay - 
- Cream - 
- Chocolate - 

The colours above represent the featured options for this specific tile. Please refer to the **Chromatics** for a full range of available colours.



Stone Layers

225 x 75 x 10mm

Deep natural hues and shifting forms mirror the layering of forest floors—rooted, textured, and alive with contrast.



Technical Specifications

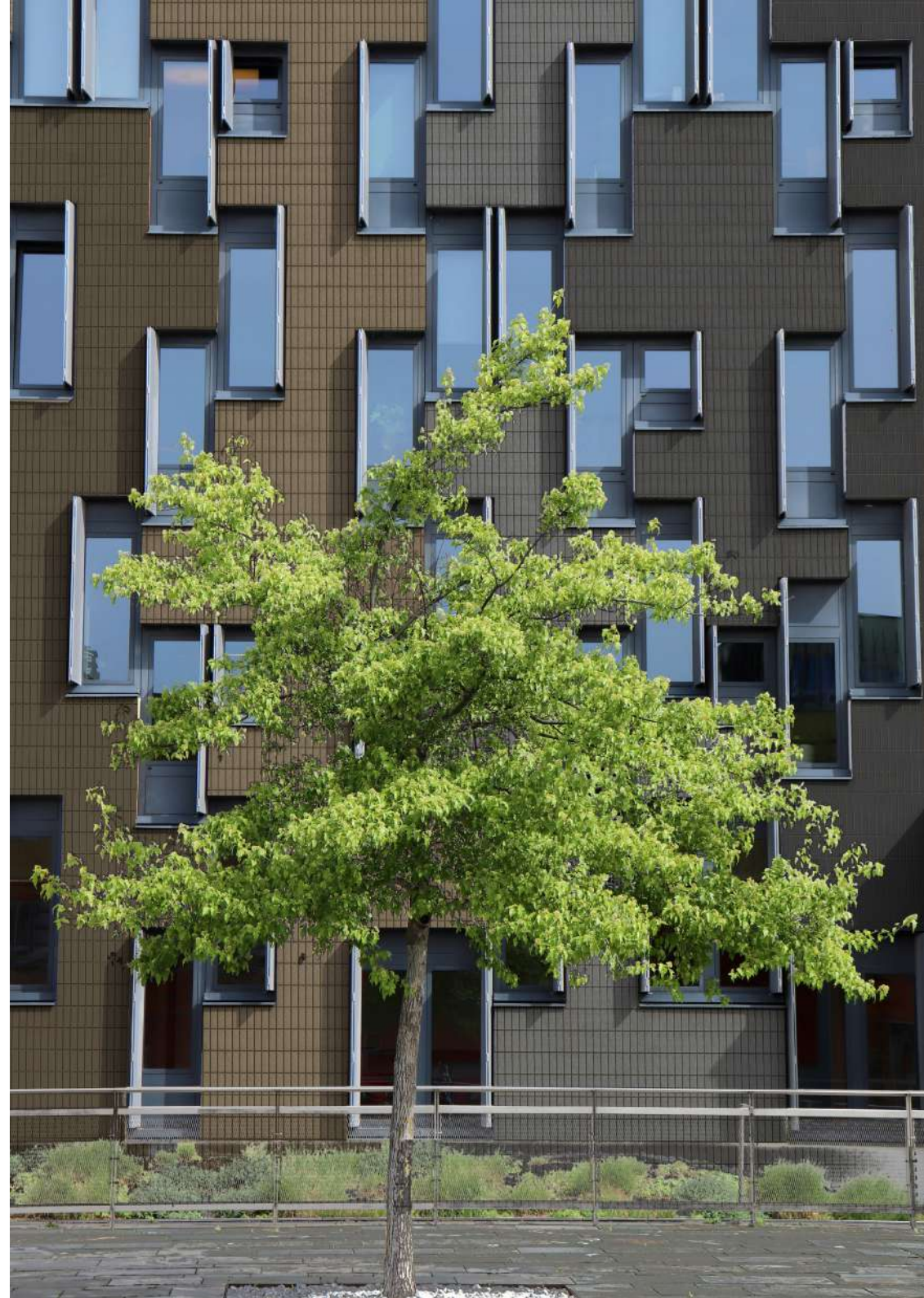
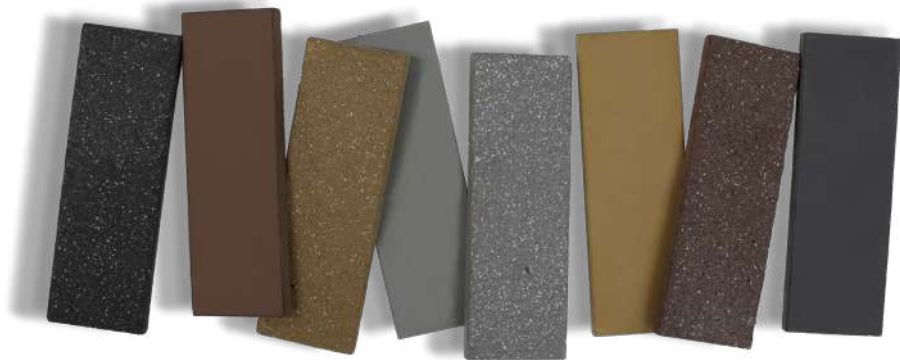
- Dimensions - 225 x 75 mm
- Thickness - 10 mm
- Pieces/sft - 5.5
- Pieces/Box - 68 (12.5sft)
- Weight/Piece - 0.35 Kg
- Weight/Box - 24 Kg

Refer Technical Master Sheet for the complete information about the product

Featured Colors

- Ruby - 
- Coral - 
- Fern - 
- Clay - 
- Cream - 
- Chocolate - 

The colours above represent the featured options for this specific tile. Please refer to the **Chromatics** for a full range of available colours.



Moss Fade

225 x 75 x 10mm

A gentle gradient of green and earthen tones suggests growth and grounding, blending nature's palette with built form.



Technical Specifications

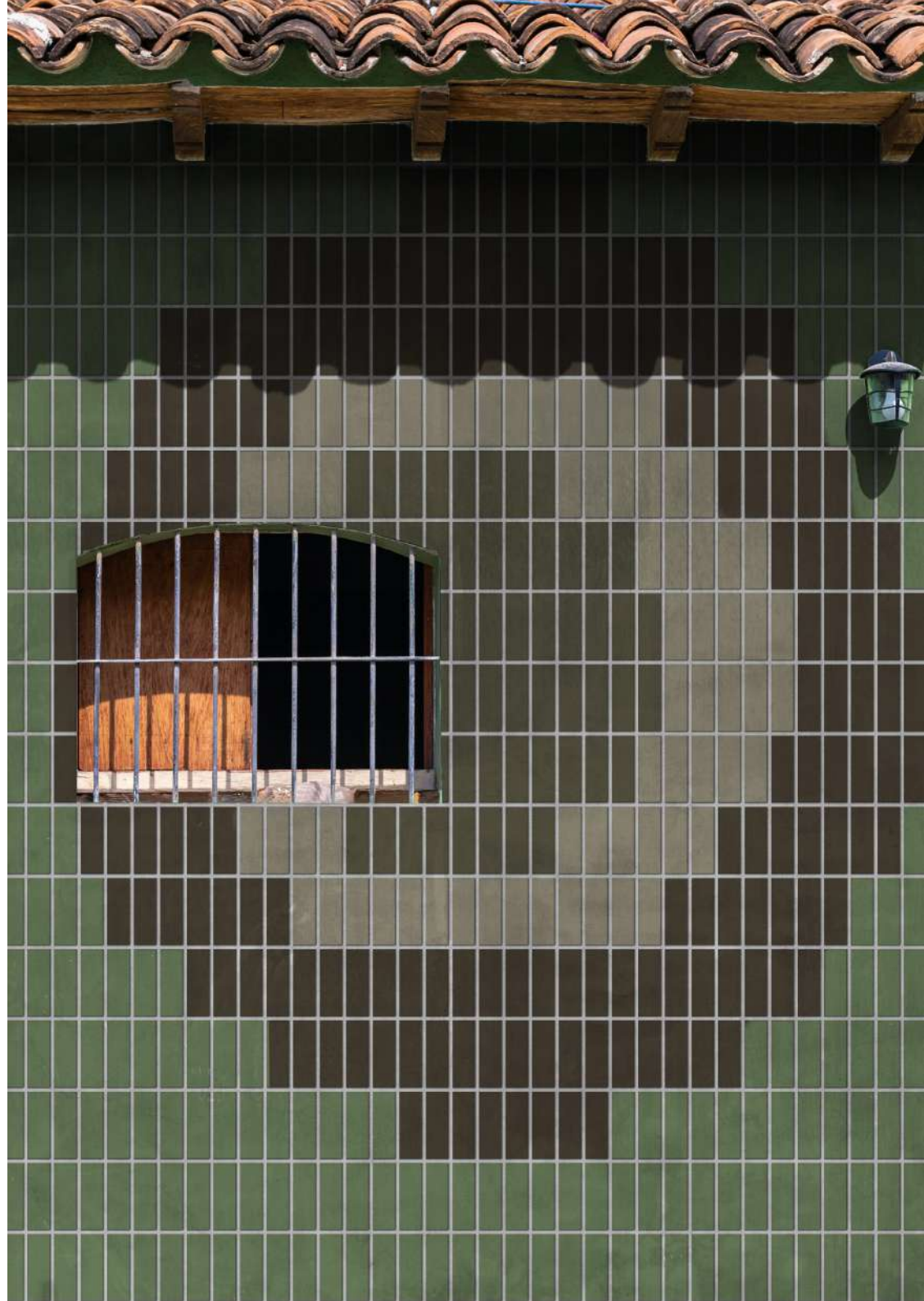
- Dimensions - 225 x 75 mm
- Thickness - 10 mm
- Pieces/sft - 5.5
- Pieces/Box - 68 (12.5sft)
- Weight/Piece - 0.35 Kg
- Weight/Box - 24 Kg

Refer Technical Master Sheet for the complete information about the product

Featured Colors

- Ruby - 
- Coral - 
- Fern - 
- Clay - 
- Cream - 
- Chocolate - 

The colours above represent the featured options for this specific tile. Please refer to the **Chromatics** for a full range of available colours.



Warm Grain

225 x 75 x 10mm

Earthy hues and clean lines create a quiet, grounded backdrop—where warmth meets stillness in perfect rhythm.



Technical Specifications

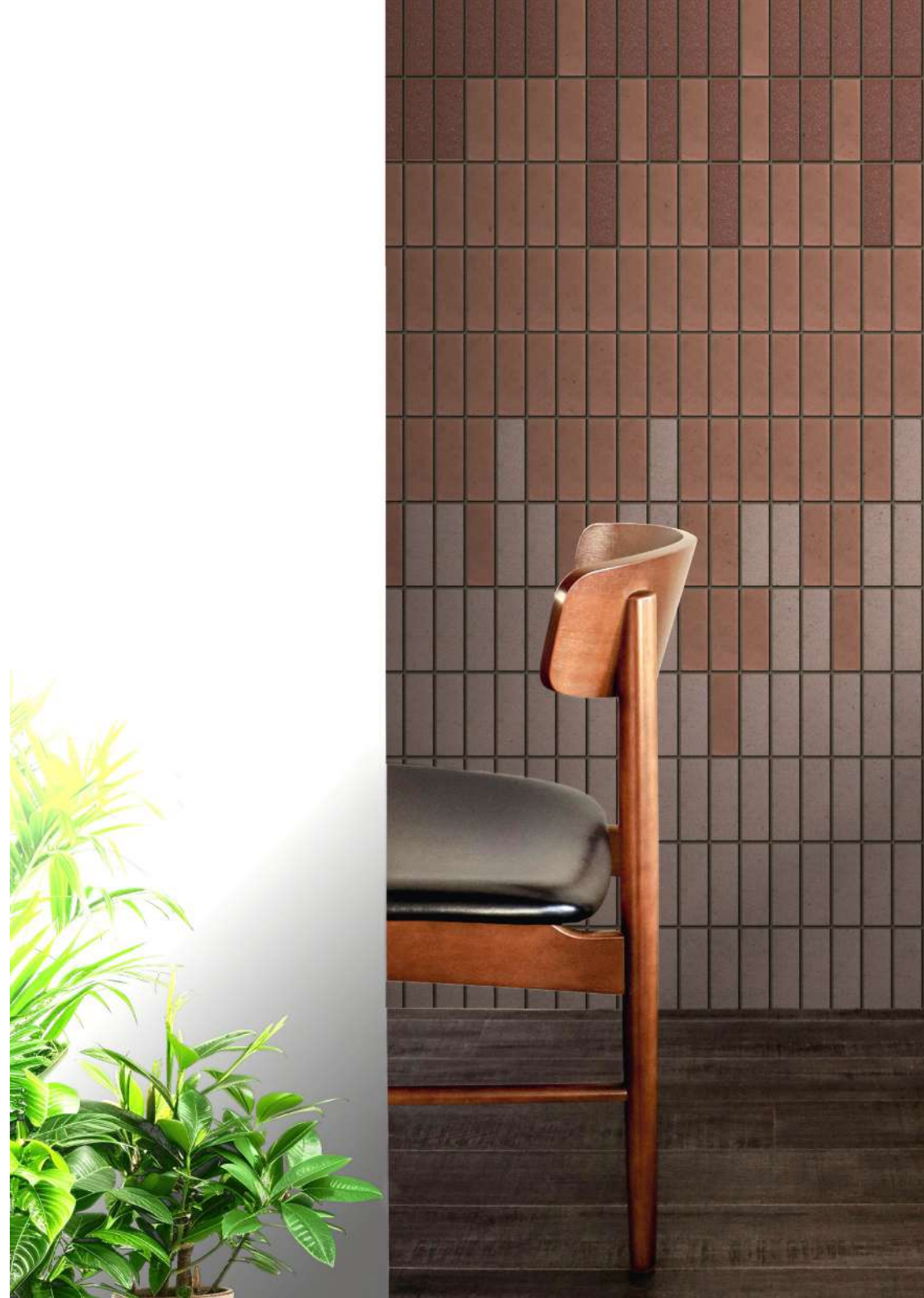
- Dimensions - 225 x 75 mm
- Thickness - 10 mm
- Pieces/sft - 5.5
- Pieces/Box - 68 (12.5sft)
- Weight/Piece - 0.35 Kg
- Weight/Box - 24 Kg

Refer to Technical Master Sheet for the complete information about the product

Featured Colors

- Ruby - 
- Coral - 
- Fern - 
- Clay - 
- Cream - 
- Chocolate - 

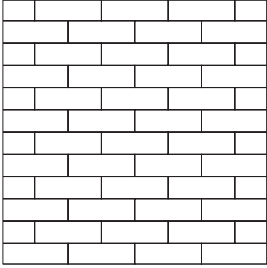
The colours above represent the featured options for this specific tile. Please refer to the **Chromatics** for a full range of available colours.



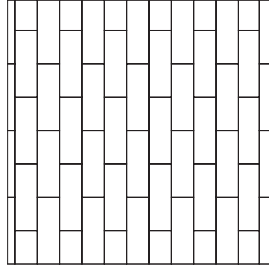


Design Aggregation

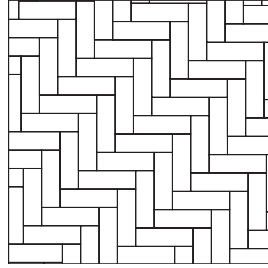
Running Bond



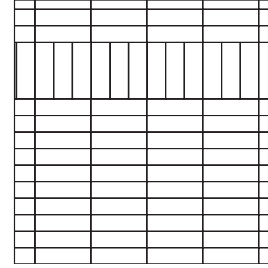
Soldier



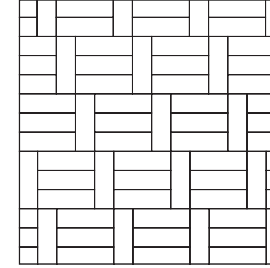
90° Herringbone



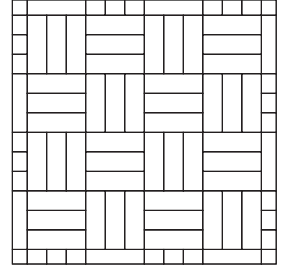
V Lintel



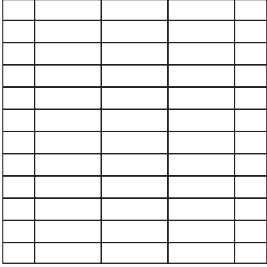
V Checker



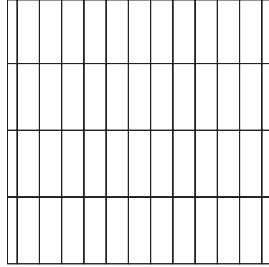
Basket Weave



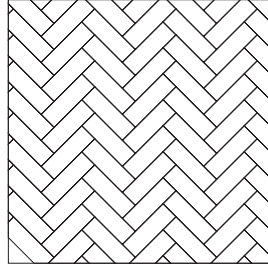
H Stack



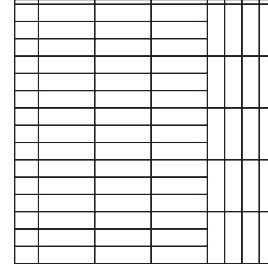
V Stack



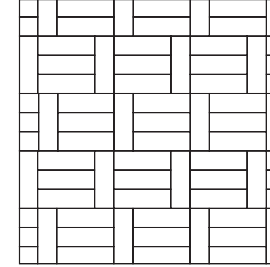
45° Herringbone



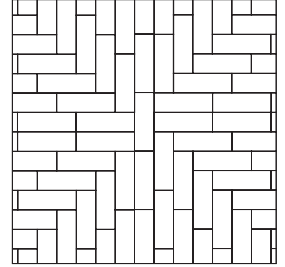
V Column



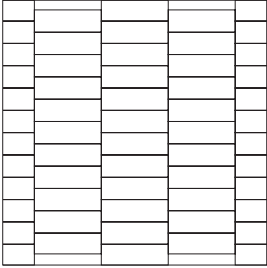
V Wave



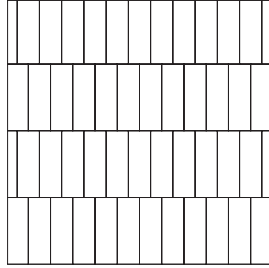
Cross Hatch



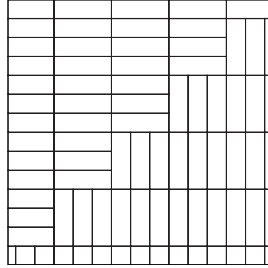
H Step



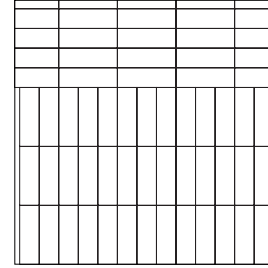
V Step



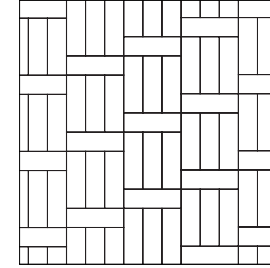
Triple Herringbone



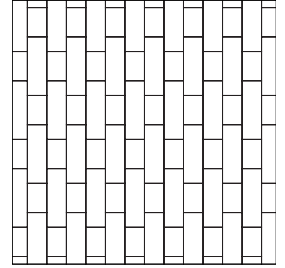
H Lintel



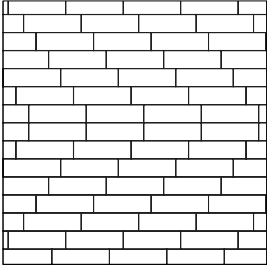
H Checker



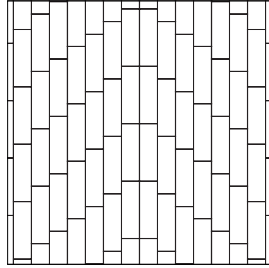
90° Flemish Bond



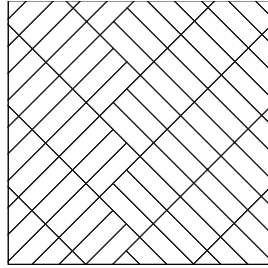
H Parquet



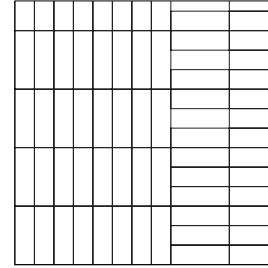
V Parquet



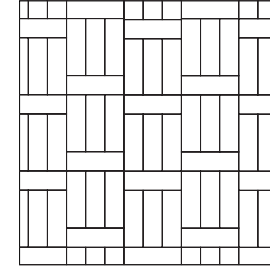
45° Triple Herringbone



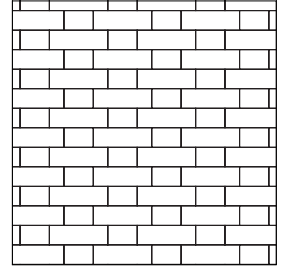
H Column



H Wave



Flemish Bond





CONTOUR

Adds depth and character,
Imperfections that potray elegance of age.

CONTOUR

Rough

210 x 60 x 10mm



Untamed and bold.

A coarse, irregular surface that captures the energy of hand cut stone.

Stone

210 x 60 x 10mm



Textured with time.

A weathered finish with gentle depth and grounded warmth.



Claymist

210 x 60 x 10mm

Reddish-brown tones echo earthy warmth, bringing raw, rustic charm to spaces rooted in nature.





Technical Specifications

- Dimensions - 210 x 60 mm
- Thickness - 10 mm
- Pieces/sft - 8.5
- Pieces/Box - 60 (7 sft)
- Weight/Piece - 0.25 Kg
- Weight/Box - 15 Kg

Refer Technical Master Sheet for the complete information about the product

Featured Colors

- Ruby - 
- Coral - 
- Fern - 
- Clay - 
- Cream - 
- Charcoal - 

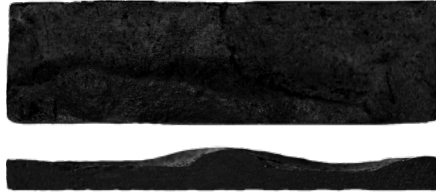
The colours above represent the featured options for this specific tile. Please refer to the **Chromatics** for a full range of available colours.



Midnight Strata

210 x 60 x 20mm

Deep charcoal tiles echo geological layers, their bold vertical rhythm adding depth and elegance like a moonlit mountain slope.




Technical Specifications

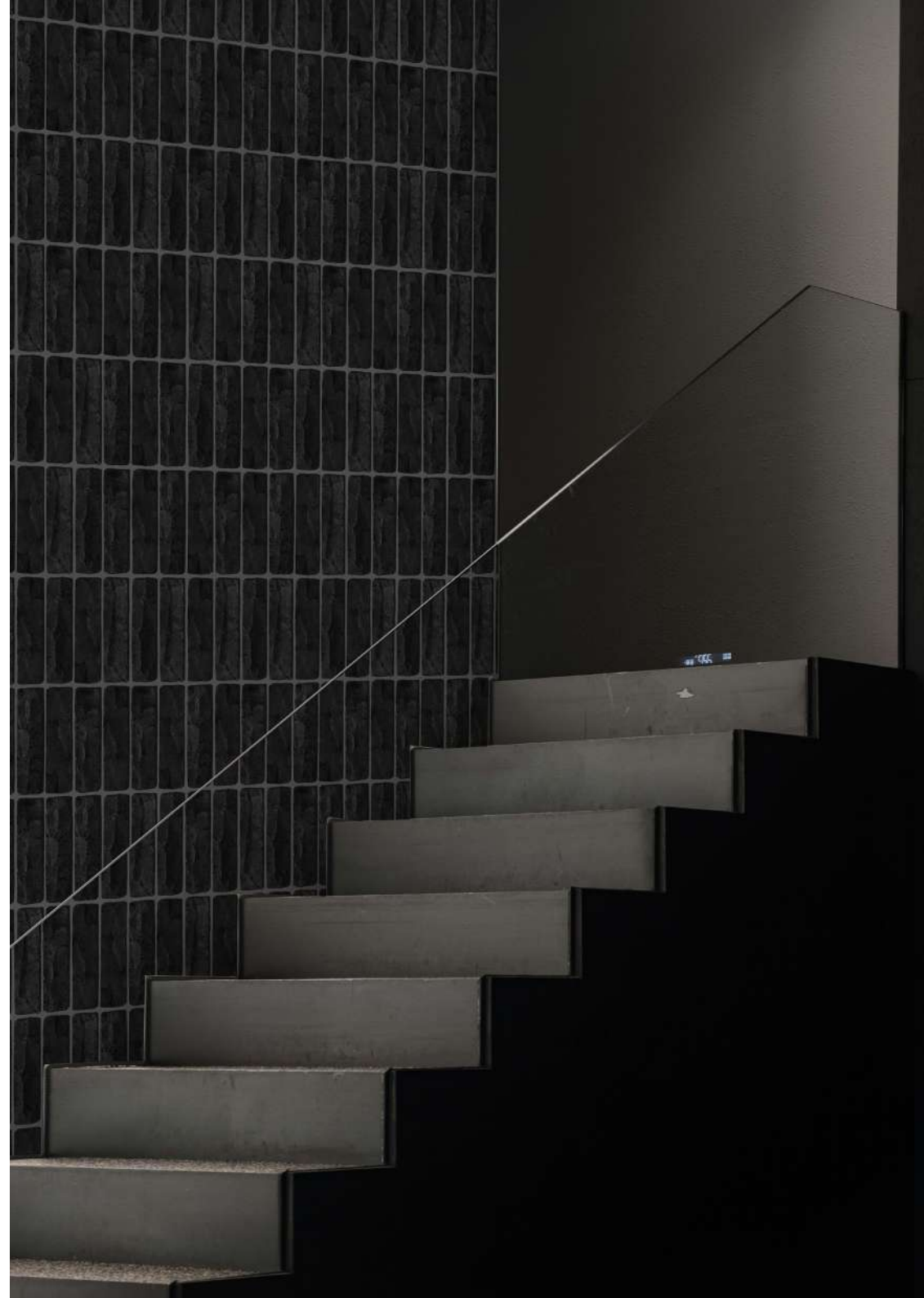
- Dimensions - 210 x 60 mm
- Thickness - 20 mm
- Pieces/sft - 8.5
- Pieces/Box - 40 (4.7 sft)
- Weight/Piece - 0.3 Kg
- Weight/Box - 12 Kg

Refer to Technical Master Sheet for the complete information about the product

Featured Colors

- Ruby - 
- Coral - 
- Fern - 
- Clay - 
- Cream - 
- Charcoal - 

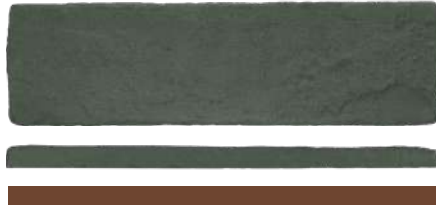
The colours above represent the featured options for this specific tile. Please refer to the **Chromatics** for a full range of available colours.



Grove

210 x 60 x 10mm

A balanced blend of greens and browns, evoking undergrowth and bark bringing forest calm into everyday spaces.



Technical Specifications

- Dimensions - 210 x 60 mm
- Thickness - 10 mm
- Pieces/sft - 8.5
- Pieces/Box - 60 (7 sft)
- Weight/Piece - 0.25 Kg
- Weight/Box - 15 Kg

Refer to Technical Master Sheet for the complete information about the product

Featured Colors

- Ruby - 
- Coral - 
- Fern - 
- Clay - 
- Cream - 
- Charcoal - 

The colours above represent the featured options for this specific tile. Please refer to the **Chromatics** for a full range of available colours.



EarthWoven

210 x 60 x 20mm

A warm, grounded expression that celebrates heritage and handcrafted stillness, evoking a sense of belonging.



Technical Specifications

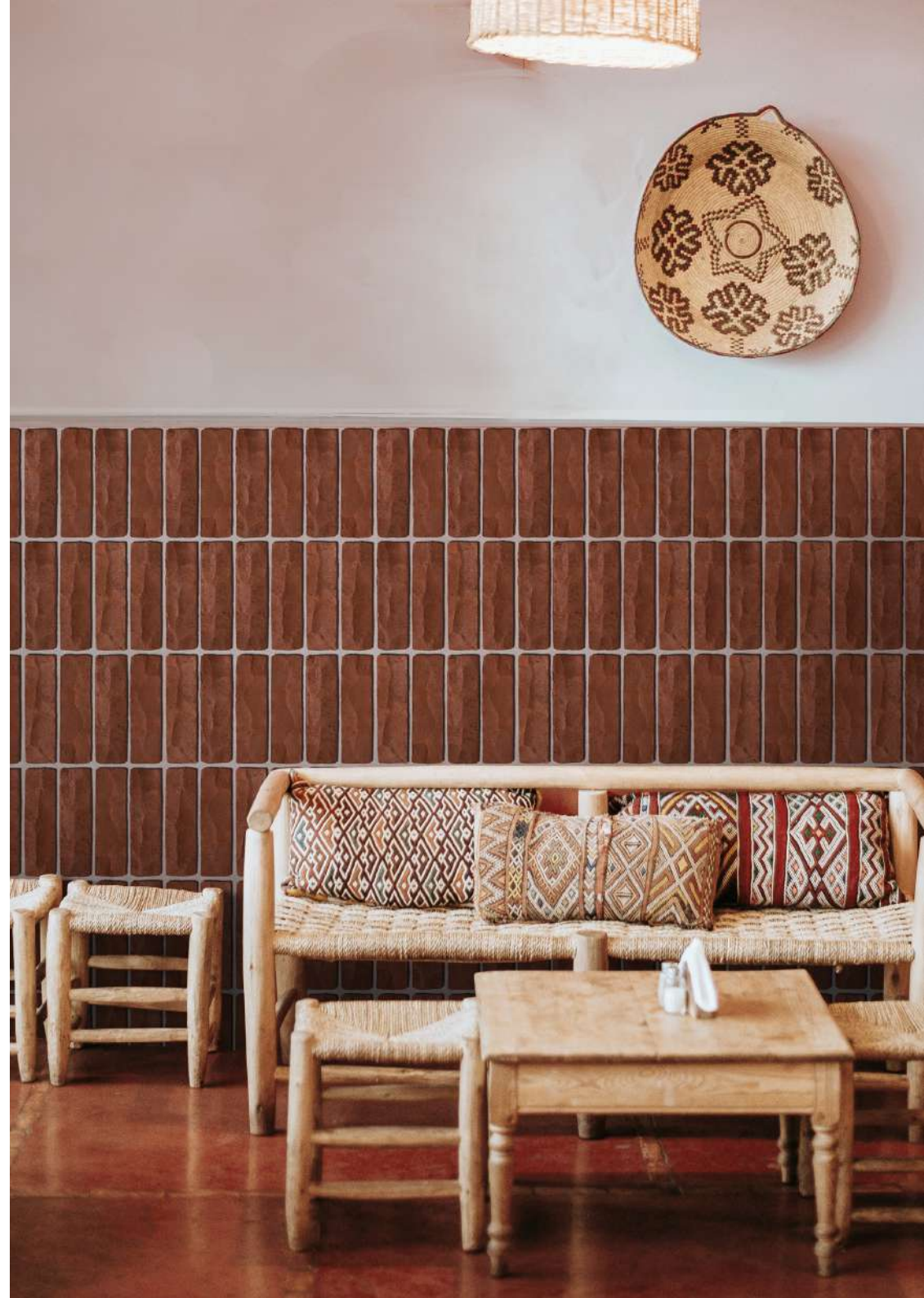
- Dimensions - 210 x 60 mm
- Thickness - 20 mm
- Pieces/sft - 8.5
- Pieces/Box - 40 (4.7 sft)
- Weight/Piece - 0.3 Kg
- Weight/Box - 12 Kg

Refer to Technical Master Sheet for the complete information about the product

Featured Colors

- Ruby - 
- Coral - 
- Fern - 
- Clay - 
- Cream - 
- Charcoal - 

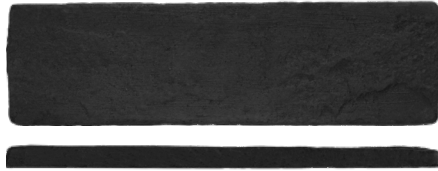
The colours above represent the featured options for this specific tile. Please refer to the **Chromatics** for a full range of available colours.



Lunar Ash

210 x 60 x 10mm

A quiet presence defined by depth and clarity, reflecting the strength and stability found in nature's core.



Technical Specifications

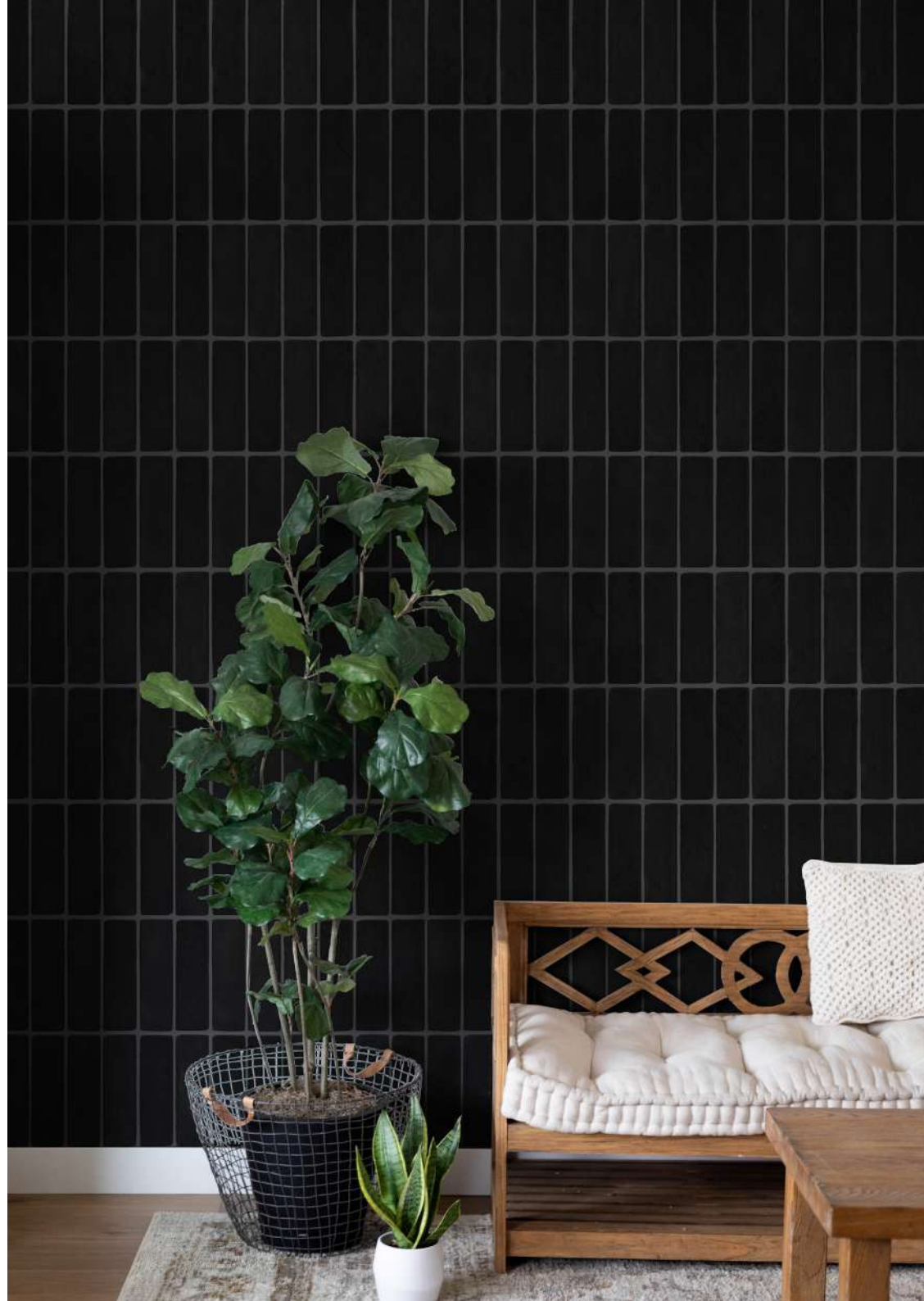
- Dimensions - 210 x 60 mm
- Thickness - 10 mm
- Pieces/sft - 8.5
- Pieces/Box - 60 (7 sft)
- Weight/Piece - 0.25 Kg
- Weight/Box - 15 Kg

Refer to Technical Master Sheet for the complete information about the product

Featured Colors

- Ruby - 
- Coral - 
- Fern - 
- Clay - 
- Cream - 
- Charcoal - 

The colours above represent the featured options for this specific tile. Please refer to the **Chromatics** for a full range of available colours.



Soilmute

210 x 60 x 20mm

A subtle harmony of form and texture that invites calm, echoing the gentle layers of untouched landscapes.



Technical Specifications

- Dimensions - 210 x 60 mm
- Thickness - 20 mm
- Pieces/sft - 8.5
- Pieces/Box - 40 (4.7 sft)
- Weight/Piece - 0.3 Kg
- Weight/Box - 12 Kg

Refer to Technical Master Sheet for the complete information about the product

Featured Colors

- Ruby - 
- Coral - 
- Fern - 
- Clay - 
- Cream - 
- Charcoal - 

The colours above represent the featured options for this specific tile. Please refer to the **Chromatics** for a full range of available colours.



Rooted Realm

210 x 60 x 10mm

Quietly echoing the raw textures of earth and sunbaked surfaces these spaces ground us in the beauty of nature's permanence and simplicity.



Technical Specifications

- Dimensions - 210 x 60 mm
- Thickness - 10 mm
- Pieces/sft - 8.5
- Pieces/Box - 60 (7 sft)
- Weight/Piece - 0.25 Kg
- Weight/Box - 15 Kg

Refer Technical Master Sheet for the complete information about the product

Featured Colors

- Ruby - 
- Coral - 
- Fern - 
- Clay - 
- Cream - 
- Charcoal - 

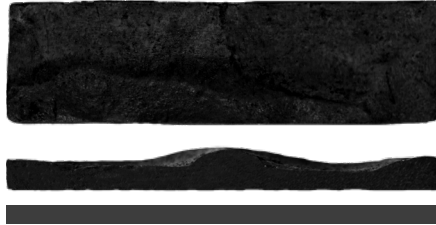
The colours above represent the featured options for this specific tile. Please refer to the **Chromatics** for a full range of available colours.



Shaded depths

210 x 60 x 20mm

A serene nook where light retreats and shadows breathe inviting pause, depth, and quiet contemplation



Technical Specifications

- Dimensions - 210 x 60 mm
- Thickness - 20 mm
- Pieces/sft - 8.5
- Pieces/Box - 40 (4.7 sft)
- Weight/Piece - 0.3 Kg
- Weight/Box - 12 Kg

Refer to Technical Master Sheet for the complete information about the product

Featured Colors

- Ruby - 
- Coral - 
- Fern - 
- Clay - 
- Cream - 
- Charcoal - 

The colours above represent the featured options for this specific tile. Please refer to the **Chromatics** for a full range of available colours.



Terrastripe

210 x 60 x 10 - 20mm

A rhythmic dialogue of form and structure—where architectural lines meet the timeless essence of grounded terrains.



Technical Specifications

- Dimensions - 210 x 60 mm
- Thickness - 10 / 20 mm
- Pieces/sft - 8.5
- Pieces/Box - 60 / 40 (9.5 / 4.75 Sft)
- Weight/Piece - 0.25 / 0.3 Kg
- Weight/Box - 15 / 12 Kg

Refer to Technical Master Sheet for the complete information about the product

Featured Colors

- Ruby - 
- Coral - 
- Fern - 
- Clay - 
- Cream - 
- Charcoal - 

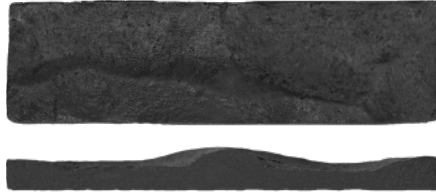
The colours above represent the featured options for this specific tile. Please refer to the **Chromatics** for a full range of available colours.



Cavestone

210 x 60 x 20mm

Silent yet bold, this space reflects the stillness of carved-out places—an ode to nature's enduring strength and balance




Technical Specifications

- Dimensions - 210 x 60 mm
- Thickness - 20 mm
- Pieces/sft - 8.5
- Pieces/Box - 40 (4.7 sft)
- Weight/Piece - 0.3 Kg
- Weight/Box - 12 Kg

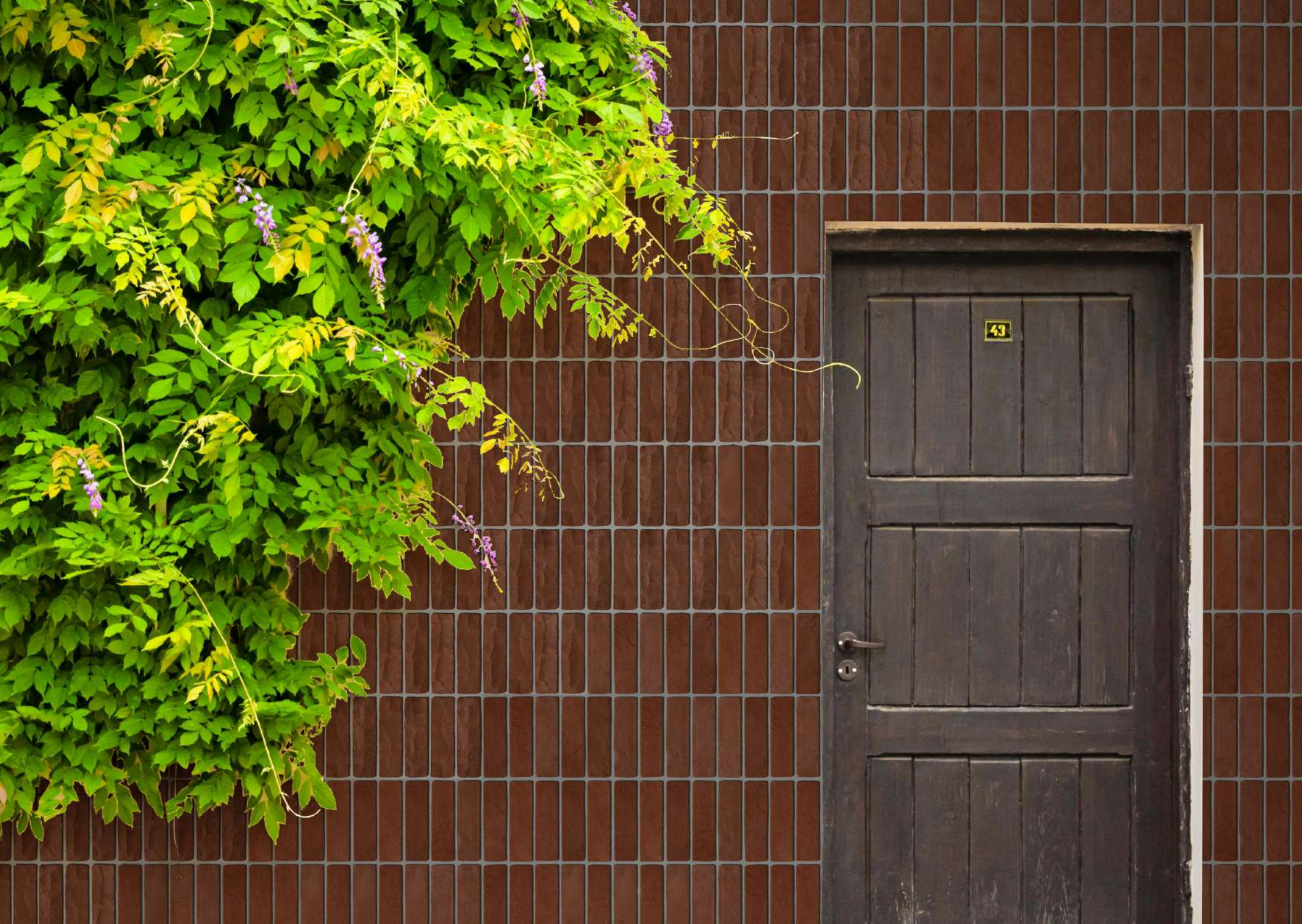
Refer to Technical Master Sheet for the complete information about the product

Featured Colors

- Ruby - 
- Coral - 
- Fern - 
- Clay - 
- Cream - 
- Charcoal - 

The colours above represent the featured options for this specific tile. Please refer to the **Chromatics** for a full range of available colours.

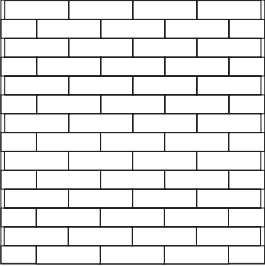




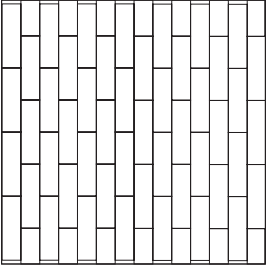
43

Design Aggregation

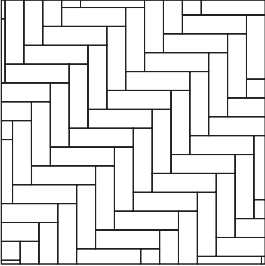
Running Bond



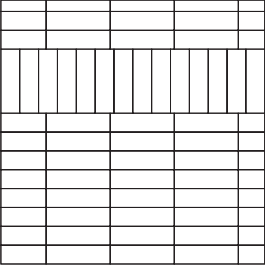
Soldier



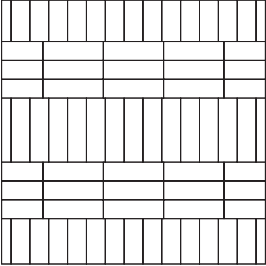
90° Herringbone



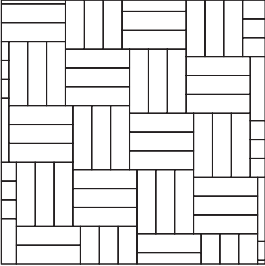
V Lintel



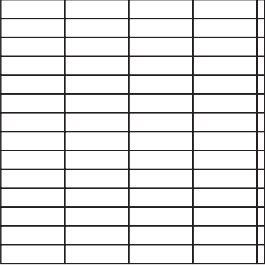
V Skip



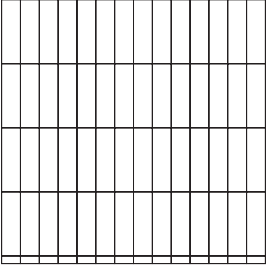
Basket Weave



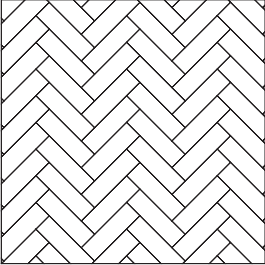
H Stack



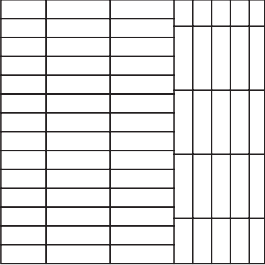
V Stack



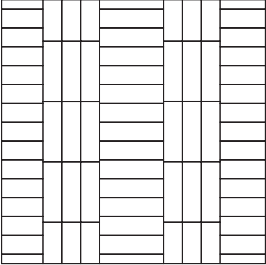
45° Herringbone



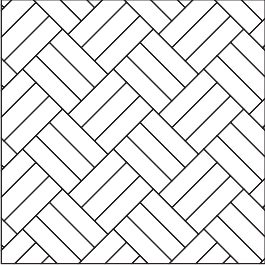
V Column



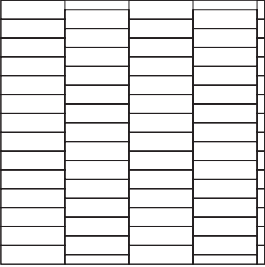
H Skip



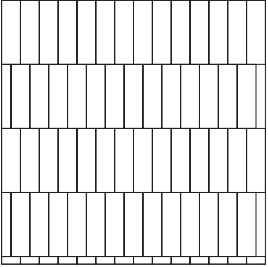
45° Basket Weave



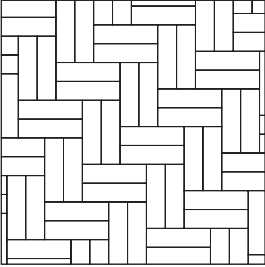
H Step



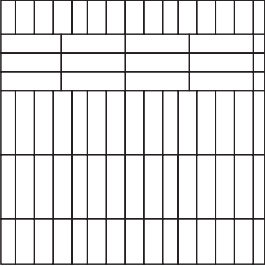
V Step



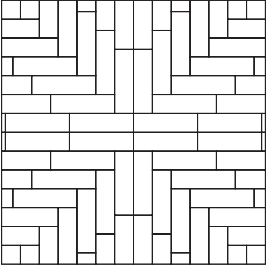
Double Herringbone



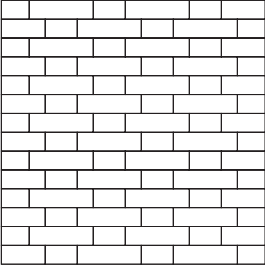
H Lintel



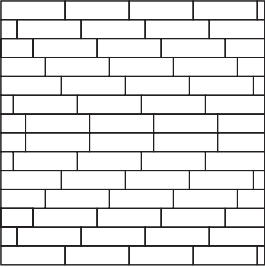
Cross Hatch



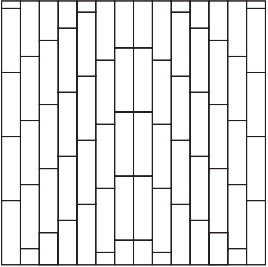
H Flemish Bond



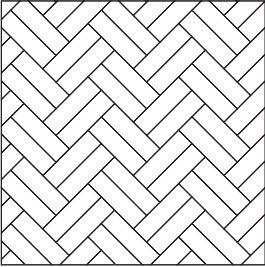
H Parquet



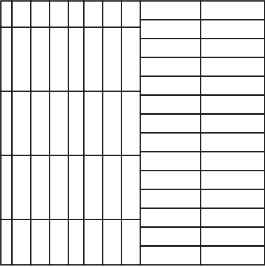
V Parquet



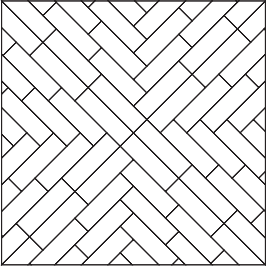
45° Double Herringbone



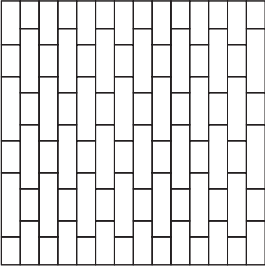
H Column



45° Cross Hatch

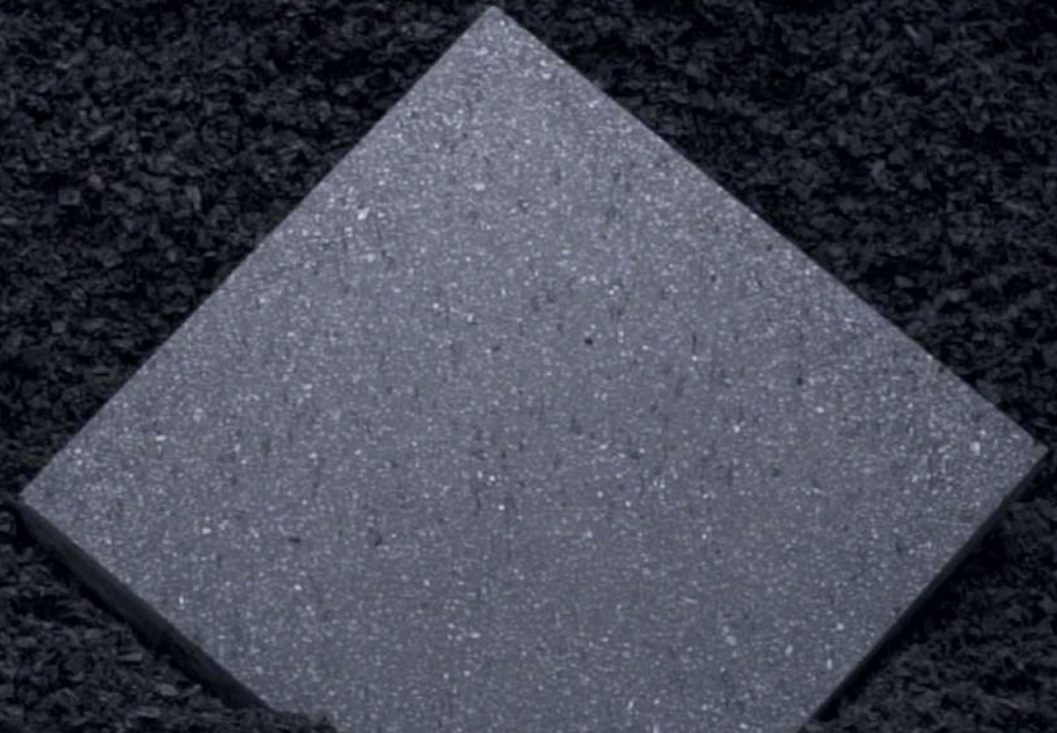


V Flemish Bond





CARBON WALL



CARBON WALL



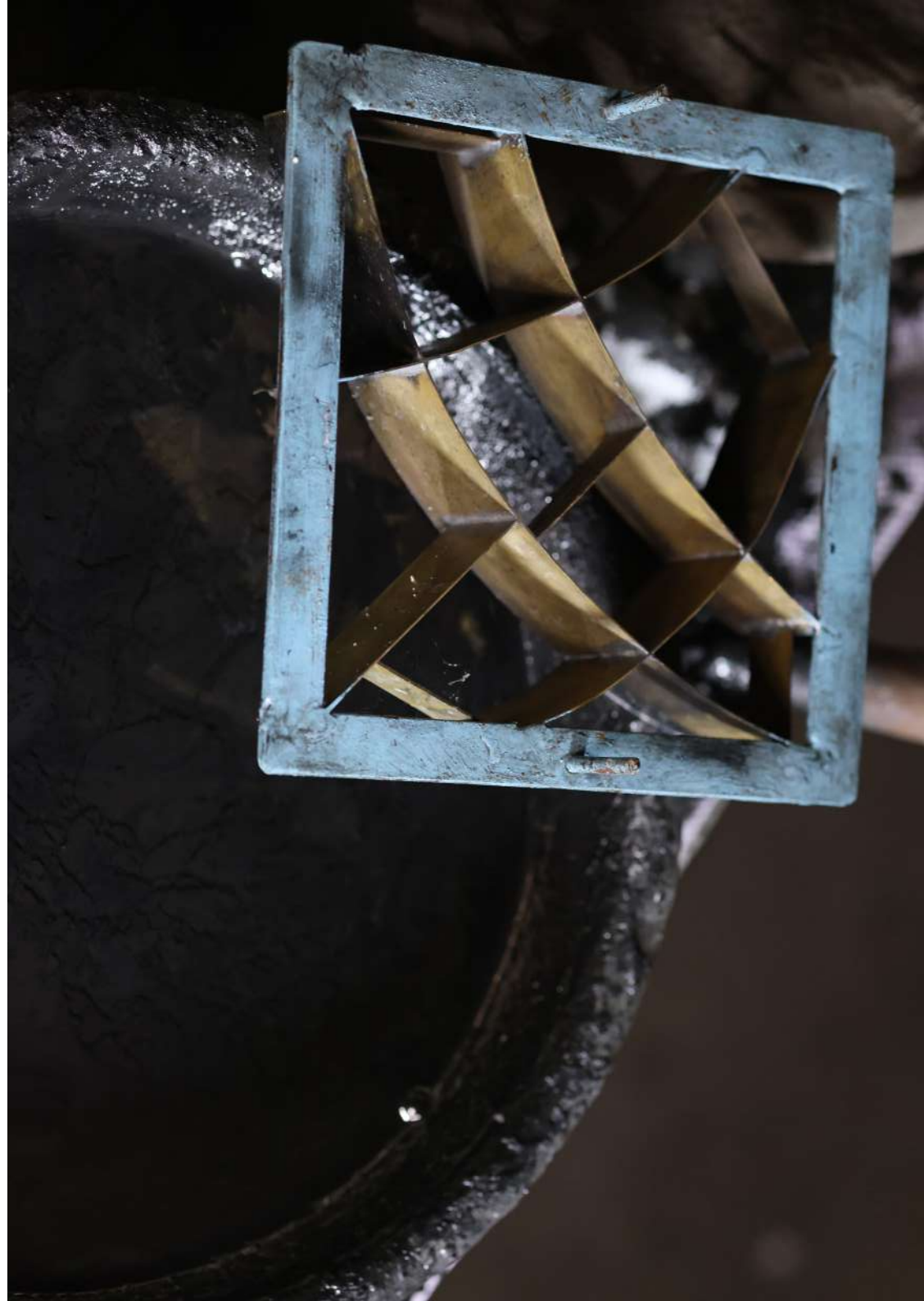
A new medium to explore – Carbon Wall - These wall tiles can create countless designs, with only three shapes and five shades. Through Carbon Wall Tiles, we would encourage a shift in perspective on art of wall making, and not just the making of wall art.



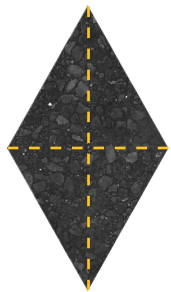
**ARRANGEMENT
SERIES**



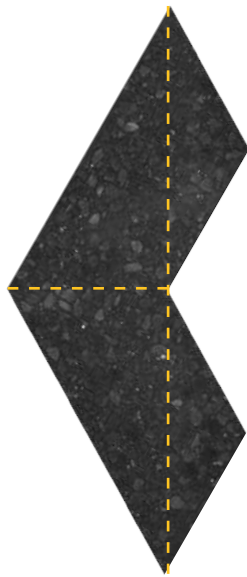
**COMPOSITION
SERIES**



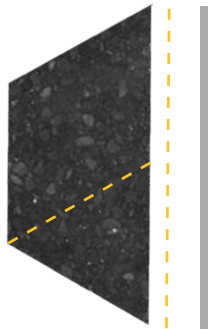
TILE DIMENSIONS



L 173.21 B 100 T 15mm



L 346.41 B 100 T 15mm



L 200 B 100 T 15mm

WALL TILES CATALOGUE



A - C1



B - C1



C - C1



A - C2



B - C2



C - C2



A - C3



B - C3



C - C3



A - C4



B - C4



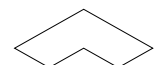
C - C4



A - C5



B - C5

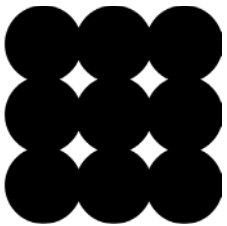


C - C5

SCOPE OF IDEA

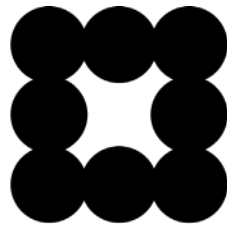
To create a Carbon wall, you can assemble the murals into modules that are versatile enough to be assembled into various...

ARRANGEMENTS



and

COMPOSITIONS



This allows for endless creative possibilities, enabling you to customize your wall to your liking and bring your vision to life.

The modularity of the tiles also means that you can easily modify or expand your carbon wall design in the future, making it a flexible and dynamic feature in your space.





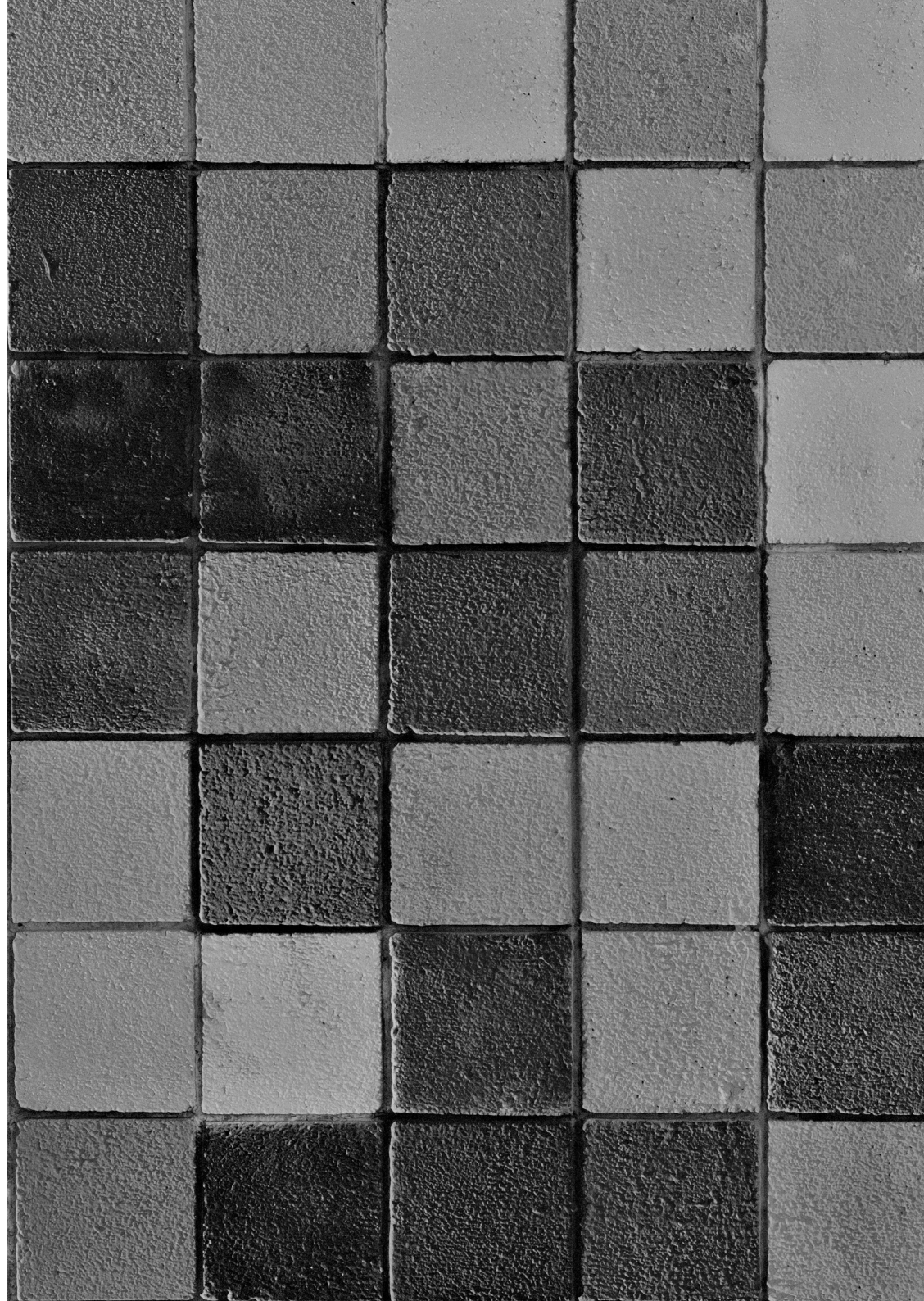




ARRANGEMENT SERIES



Discover the art of wall making and craft your own distinctive arrangements. Design your Carbon wall to unleash your creativity and transform your walls into a stunning masterpiece with impact.



FLAIR



In decorating, she had quite the flair
Her home was beyond compare
With a touch here and there
And a keen eye for flair
Each room was a masterpiece rare.



LUXE



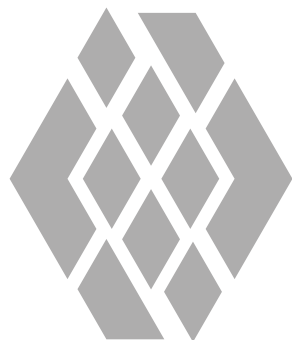
In his home, everything was luxe
From the furniture down to the tucks
With velvet and gold
His style was so bold
His guests were all awestruck
and struck.



MIRTH



The living room was filled with mirth,
With laughter and joy it burst forth.
The decor was quite grand,
Inviting all to take a stand,
And bask in its warmth and its worth.



GLINT



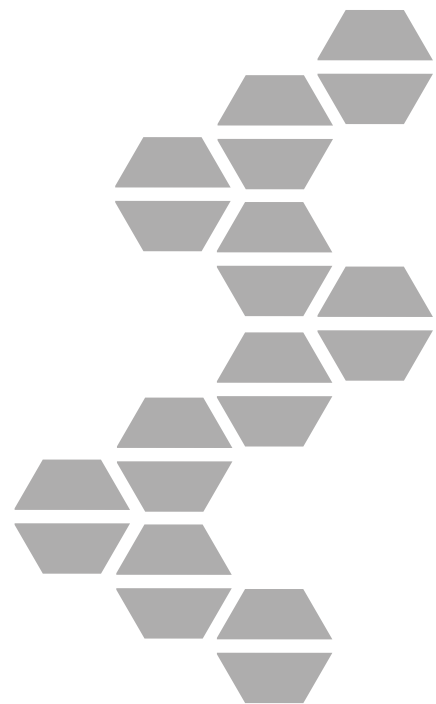
The light from the window did glint
On the vase that was made
of clear flint
It sparkled and shone
In a room all its own
A treasure that nobody could stint.



FERVOUR



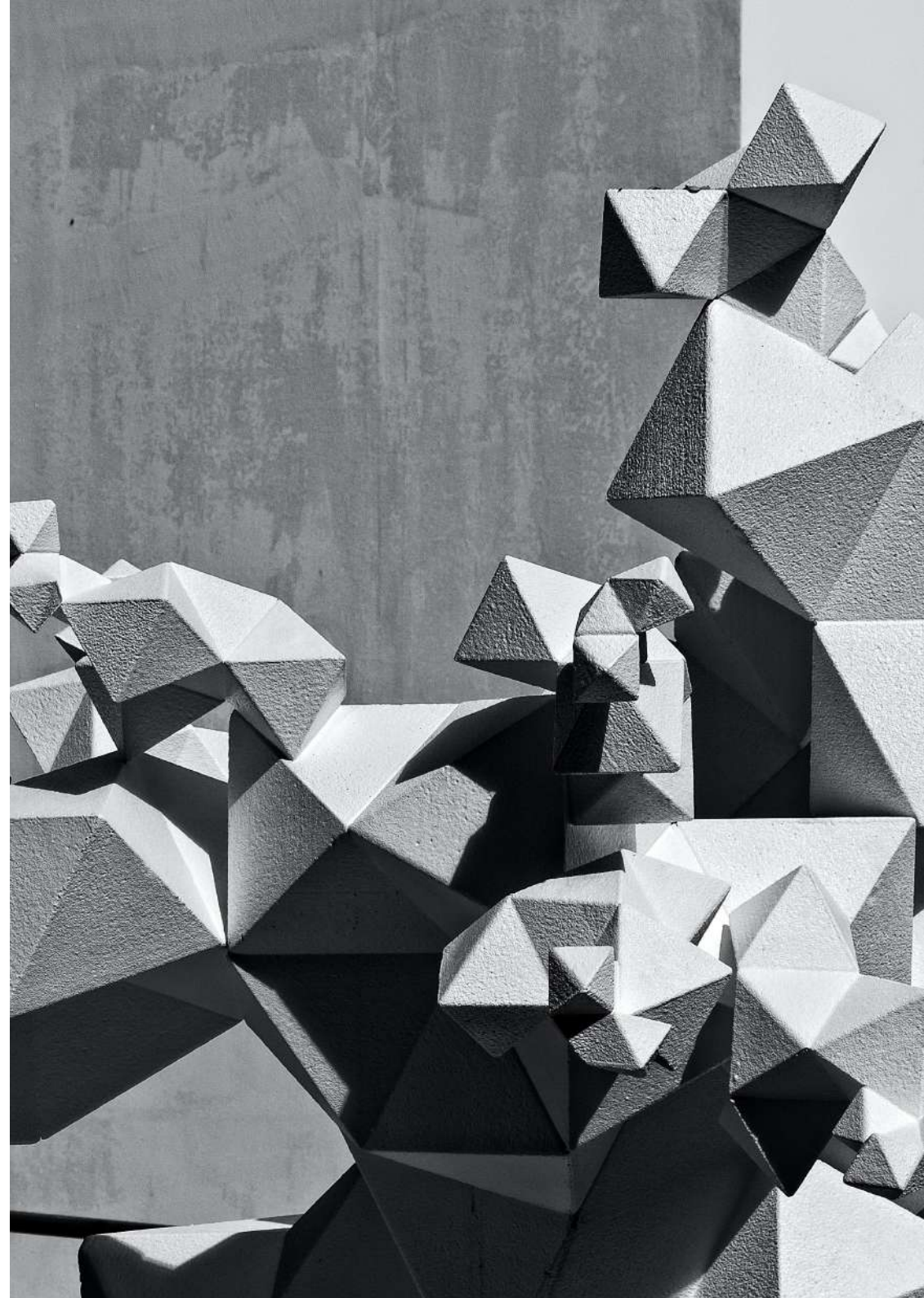
With fervor, they painted each wall,
In a shade that was bold
and not small.
They worked day and night,
Till the job was just right,
And their home was the envy of all.



COMPOSITION SERIES



The composition series was created to tell the fascinating tales that lie behind the magnificent five elements of nature and the stunning designs that embody them. These stories are so potent that they have the capacity to carry you away to a completely different realm of wonder and awe.

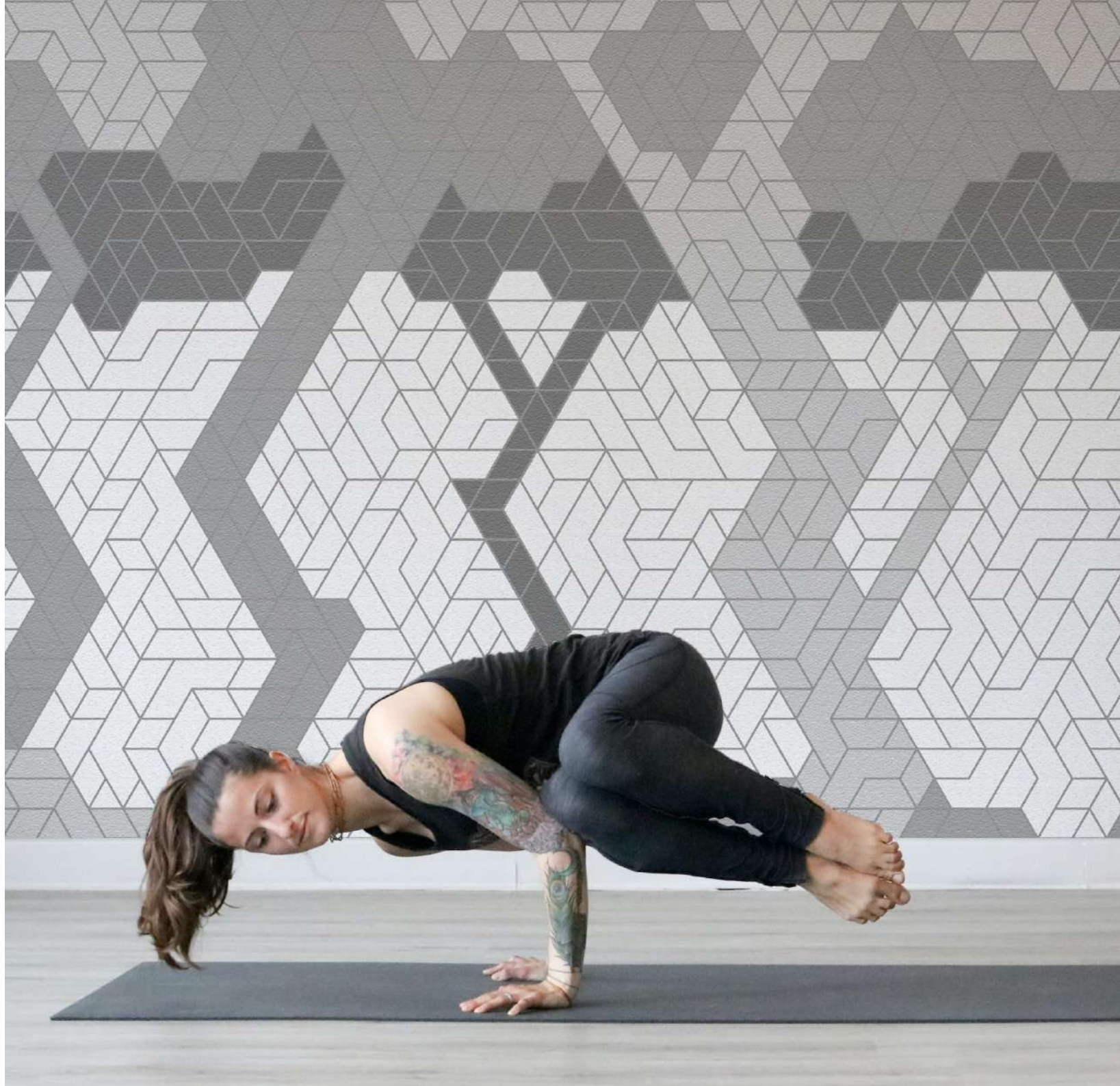


EARTH



Earth is one of the five elements of the universe and has been a source of inspiration for many. It symbolizes stability, grounding, and growth, invoking a sense of safety and reliability.

Its presence in a space creates a warm and inviting atmosphere. The earthy-ness evokes a sense of tranquility, making it a popular choice in interior design.



FIRE



Fire has been a significant source of inspiration and is recognized as one of the five elements that constitute the universe. It symbolizes passion, energy, and transformation, invoking a sense of intensity and power.

Its presence in a space creates a sense of dynamism, filled with a sense of vibrancy. Its use in interior design can create a sense of drama and glamour.



AIR



Air has been a source of inspiration and is recognized as one of the five elements that make up the universe. It symbolizes freedom, clarity, and creativity, invoking a sense of openness and lightness.

Its presence in a space creates a sense of simplicity and purity. Its use in interior design can create a sense of spaciousness and modernity.



WATER



Water has served as a source of inspiration for many, being recognized as one of the five elements that make up the universe. It symbolizes calmness, purity, and adaptability, invoking a sense of clarity, and flow.

Its presence in a space creates a refreshing atmosphere and its use in interior design can create a sense of elegance.



ETHER



Void is one of the five elements of the universe and has always been a source of inspiration. It symbolizes strength and precision, invoking a sense of focus and discipline.

Its presence in a space creates a sense of sophistication, filled with a sense of minimalism, and refinement. Its use in interior design can create a sense of sleekness.



CHROMATICS

EARTH'S ESSENCE TRANSFORMED INTO STUNNING SHADES

Our colour palette is a vivid narrative that draws inspiration from the landscapes around us and the connection between people and nature. Each shade has been thoughtfully chosen to reflect the raw beauty of the earth, from the earthy reds and browns that capture the warmth of the soil, to the deep blacks and soft pastels that evoke the sky, the sea, and the mountains. These colours are more than just hues—they are the stories of the environments we inhabit, and the tones that people choose to bring their spaces to life.

OLIVE

FERN

CLAY

CHOCOLATE

DUNE

CREAM

CHARCOAL

STORM

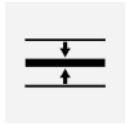
CLOUD

RUBY

CORAL

CHERRY MIST

TECHNICAL DETAILS



Thickness
10-20mm



Breaking Strength
2.5 Mpa



Compressive Strength
35 Mpa



Water Absorption
> 1.5 %



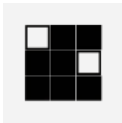
Efflorescence
Nil - Slight



Abrasion Resistance



Application
Wall



Color Variation
V2



Dimensional Deviation
+/- 1.5 mm



Fire Resistance
A1



Frost Resistant



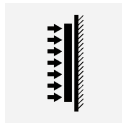
Surface Quality



Thermal Resistant



UV Resistant



Adhesion
appropriate



Customisation based on design and size is possible and the cost would be shared on case to case basis. The charges would also vary based on the quantity of order beyond 10,000 sqft. All charges are ex-factory prices. 12 colours are possible in each product

FAQ'S

What materials are used in Deewaar ?

Deewaar range is made using 95% Industrial byproducts from the steel and cement industry, making them a sustainable choice for residential and commercial spaces.

Are Deewaar claddings suitable for both indoor and outdoor application?

Yes, Deewaar range is versatile and can be used for both indoor and outdoor application, with a typical water absorption capacity of 1.25%, it is essential to apply proper waterproofing and sealing to enhance durability against outdoor elements such as rain and temperature fluctuations.

Does Deewaar come in custom shapes and sizes?

Yes, Deewaar can be customised to any shape or design, based on project scale, timeline, and a minimum order quantity. Please contact us to discuss your specific requirements.

What is the minimum order quantity?

To keep things cost-effective and environmentally friendly, we have the following minimum order quantity:

- 500 sqft for the standard Deewaar range.
- 10,000 sqft for customised claddings.

What is the production time for Deewaar post-order confirmation?

The standard manufacturing time is one week; however, it may vary depending on the order quantity. For larger orders, the timeline will be communicated accordingly.

Do you ship worldwide?

Speak to us directly about any projects outside the India, so we can better understand your applications and any relevant certification requirements, together with shipping options and embodied carbon considerations. We aim to roll out international manufacturing and distribution operations over the next few years.

How do I request a sample?

Contact our sales team at business@carboncraftdesign.com to discuss the requirements for your project. We would love to send you a sample fit for your project.

How does Deewaar Claddings resist chemical attacks?

Deewaar claddings are highly resistant to acids, alkalis, salts, sulfates, and corrosive agents due to their strong cross-linked bond structure, making them ideal for harsh environments like coastal regions and industrial areas.

Are Deewaar tiles thermally stable?

Yes, Deewaar tiles have high thermal stability. They are resistant to extreme temperature fluctuations, making them suitable for both high-temperature environments (up to 800°C in some formulations) and freeze-thaw conditions, which are common in exterior applications.

Are Deewaar tiles fire-resistant?

Yes, their inorganic composition ensures they don't burn, melt, or emit toxic gases, making them ideal for fire-rated applications.

What cleaners should be used for daily maintenance?

Use pH-neutral cleaners or mild soap diluted with water. Avoid abrasive or acidic cleaners that may damage the surface.

Are professional installers required for installing Deewaar claddings?

While skilled DIYers may install these claddings, professional installation is recommended for best results, especially for intricate patterns or challenging surfaces.

What is the lifespan of Deewaar tiles?

Deewaar tiles are highly durable and can last for decades, resisting chemical wear, thermal stress, and mechanical impact.

These FAQs ensure a clear understanding of story, installation and maintenance of CarbonCraft wall tiles, helping customers achieve optimal results.



INSTALLATION GUIDE



SURFACE PREPARATION

Ensure the wall surface is clean, dry, and free from dust, grease, and loose particles, for best results, level uneven surfaces using a suitable wall putty or mortar.



ADHESIVE SELECTION

Use a high-quality tile adhesive suitable for Deewaar tiles, for wet areas, use a waterproof adhesive.



TILE LAYOUT PLANNING

Plan the layout before starting to minimize tile cuts and ensure symmetry. Use tile spacers (2-10 mm) to maintain uniform gaps for grout application.



TILE FIXING

Apply the adhesive evenly on the wall using a notched trowel. Press the tile firmly onto the adhesive, ensuring full contact without air gaps. Use a rubber mallet to gently tap and position the tiles.



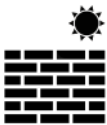
GROUTING

Allow 24 hours for adhesive curing before applying grout. Use a non-shrink, stain-resistant grout for durability. Remove excess grout with a damp sponge before it hardens.



FINISHING & CLEANING

Once the grout is set, clean the surface with a soft cloth or sponge. Avoid harsh chemicals that may affect the tile finish.



CURING & DRYING

Let the installation cure for at least 48 hours before any exposure to moisture.



MAINTENANCE & CARE

CarbonCraft Wall Claddings are designed to last up to 50 years with proper use and maintenance. Each tile is crafted with the utmost care to ensure long-lasting quality. Below are the recommended guidelines for maintaining and using CarbonCraft Tiles effectively.



REGULAR CLEANING

Wipe the tiles with a soft cloth or mop and mild detergent. Avoid abrasive scrubbers to prevent surface damage.



STAIN REMOVAL

Clean spills immediately with a damp cloth and mild soap, for tough stains, use a pH-neutral cleaner. Avoid acidic or bleach-based cleaners.



PREVENTING SCRATCHES & DAMAGE

Use soft cloths or sponges instead of rough scrubbing pads. Avoid direct impact with sharp or heavy objects.



WATER & MOISTURE CONTROL

In humid areas, ensure proper ventilation to prevent mold or discoloration. Use a sealant if required in high-moisture areas to enhance longevity.



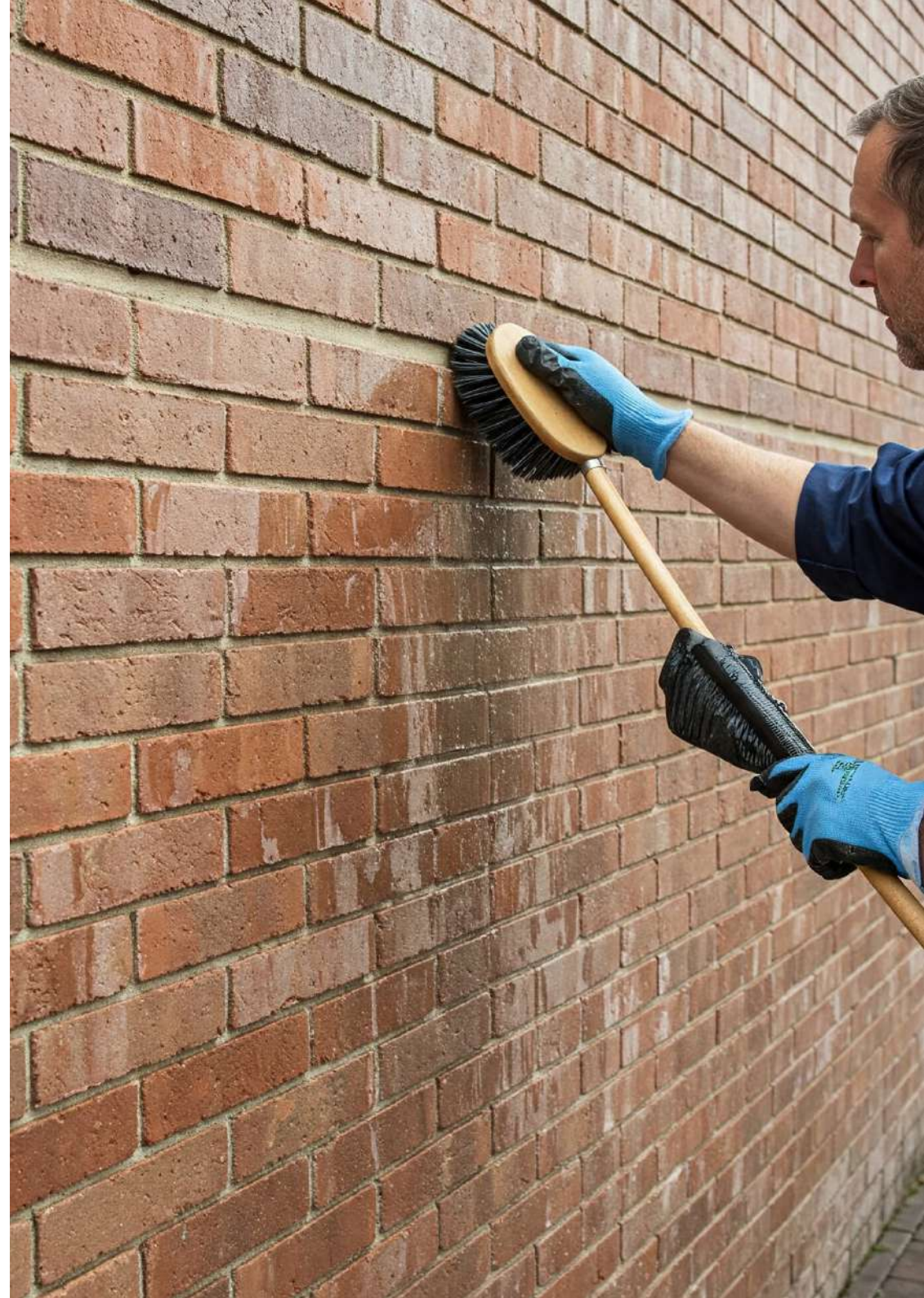
GROUT CARE

Periodically check grout lines for wear and reapply grout if needed. Clean grout lines with a mild brush and non-acidic cleaner.



LONG-TERM MAINTENANCE

Avoid strong chemicals that can degrade the surface. Conduct an annual inspection to check for cracks or loose tiles and repair them promptly.





SOUTHINDIATILES

159/1,159/2, Bashyakaralu Road East, R.S.Puram,
Coimbatore,Tamilnadu-641002

E-mail: info@southindiatiles.com | www.southindiatiles.com

Number :+91 7066666618