



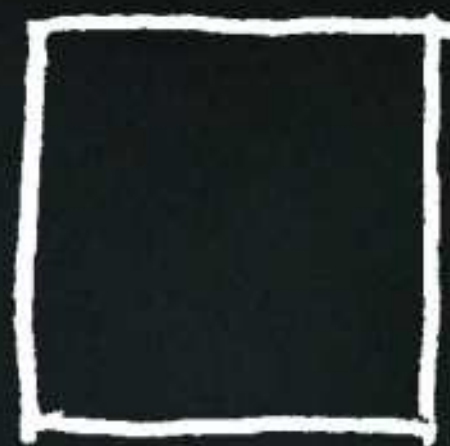
SOUTHINDIA TILES

EXTERNO

COLLECTION
12mm Thickness



30x60 - 12"x24"



12 mm

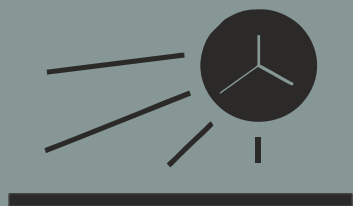
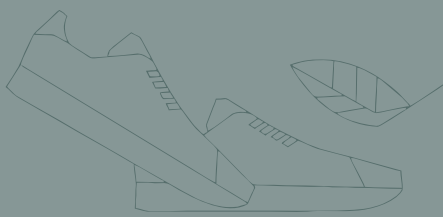
30x30 - 12"x12"

As strong and hard-wearing as the dolomitic stone that inspired it, the oblique collection is designed for exterior use in public and private spaces where the highest technical performance is required in terms of weathering and stress resistance. With its elegant surface design and appealing colours, it is ideal for architectural applications in both classic and contemporary styles.

APPLICATION AREA

WALL	FLOOR	TRAFFIC	EXTERIOR	SHOWER	WET AREA	POOL	CAR PARKING	TERRACES AND BALCONIES
Yes	Yes	Standard Commercial	Yes	Yes	Yes	Yes	Yes	Yes

The strength of outdoor design technical features



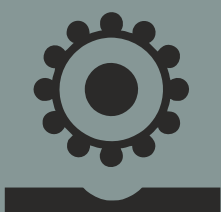
Durable over time



Resistant to Loads



Suitable for Commercial



Stain Resistant



Rectified



Anti Slip



Stain Resistant



Resistant to Acid and Chemicals



Suitable for Car Parking

FINISHES

Texture



GRIP



NATURAL STONE



HAMMERED EDGE



CLEFT STONE




SOFT STRUCTURED





MATT

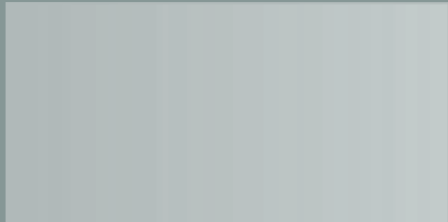
PACKING FORMAT Sizes. Formats

Piece x 

m² x 

kg x 

 x 



298x600
12" x 24"

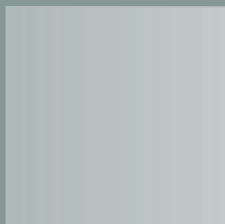
All designs without any floral(decor) print, All plain

4

0.715
7.70 Sq.ft.

18

56



298x298
12" x 12"

Some designs without any floral print, All plain
Some designs with 🌸 floral prints in 25-30% ratio and rest pieces w/o decor print in **same box**
we have no different packing in 30x30 for plain and floral pieces

7

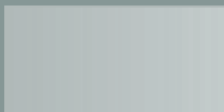
0.621
6.69 Sq.ft.

16

64

Patio pack

Special Pieces



147x298
6" x 12"

12

0.525
5.66 Sq.ft.

13

32



147x147
6" x 6"

24

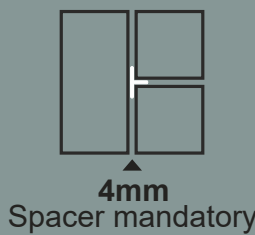
0.519
5.58 Sq.ft.

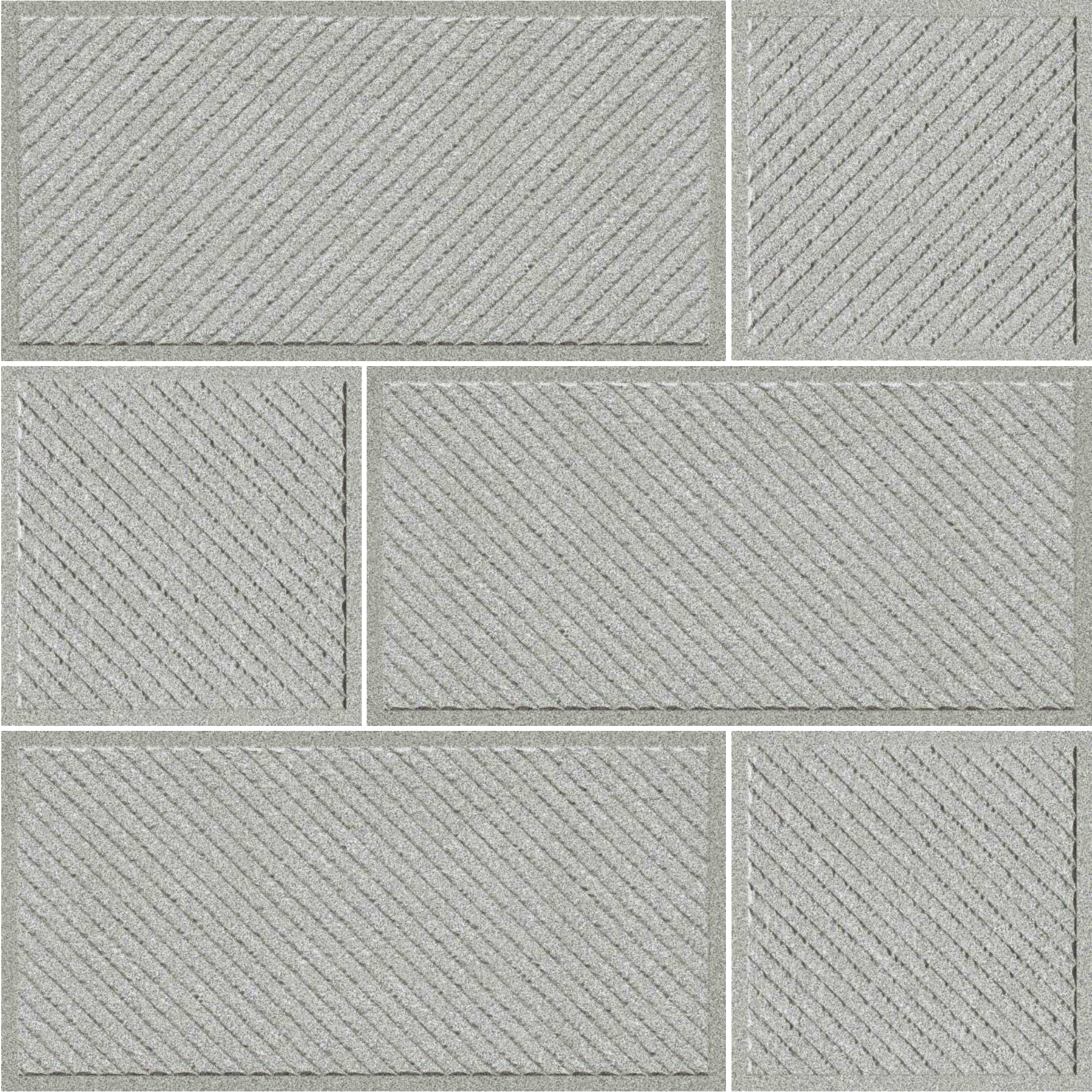
13

32

Quantity Calculation As per laying pattern

There are different no. of boxes required (30x60 and 30x30) for different laying styles in a particular area. Follow Laying Pattern proposal sheet to calculate required no. of boxes as per selected laying style.



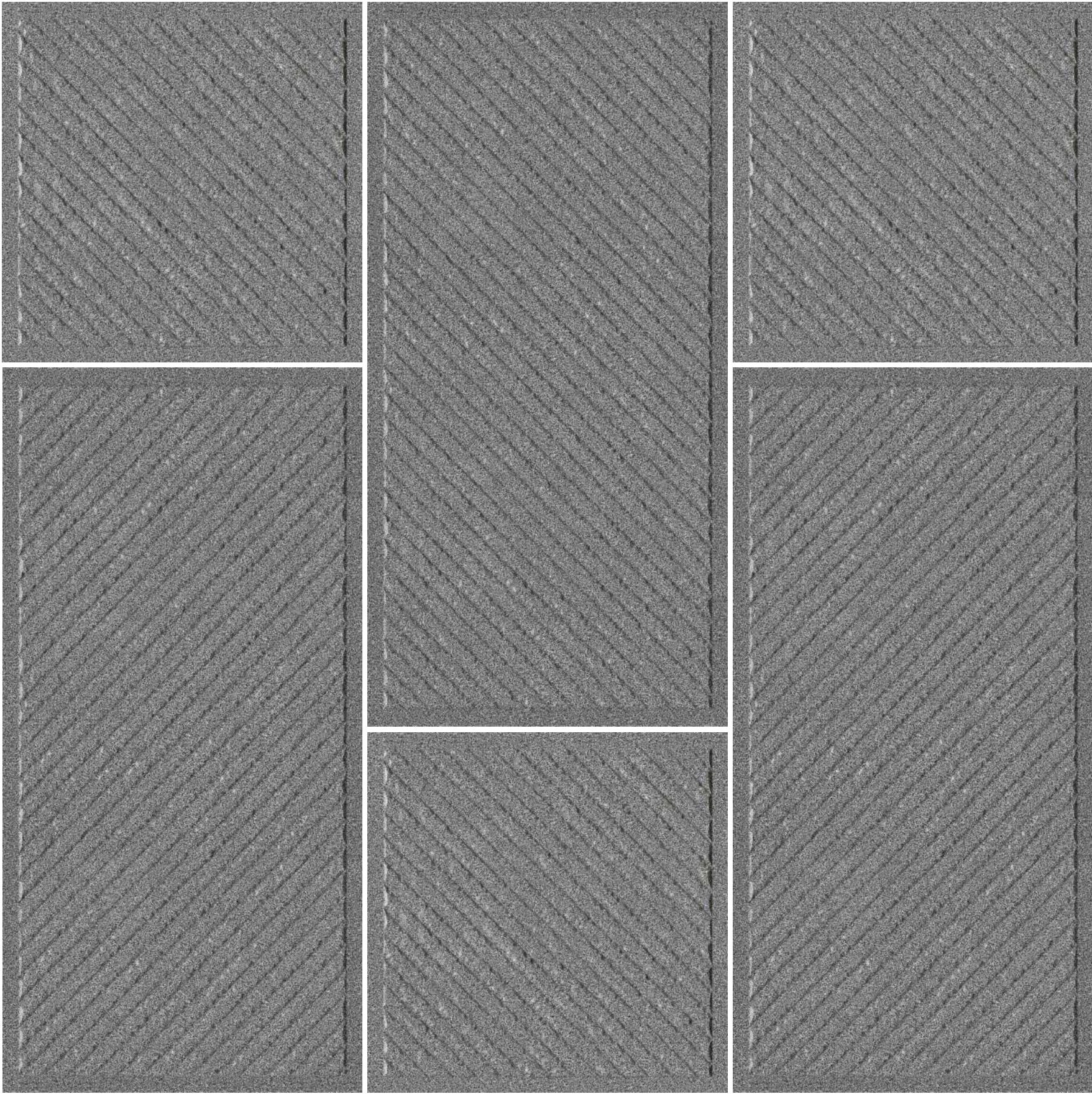


Joint colour / Suggested grouting

Silver Shadow 106

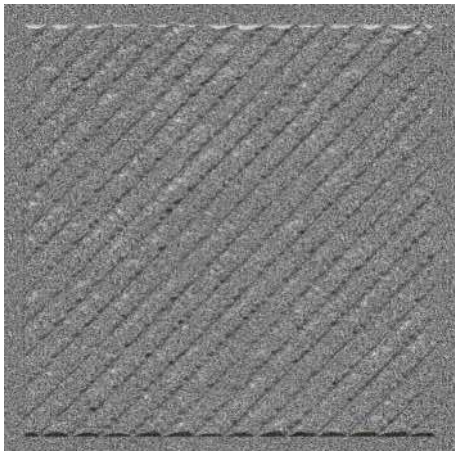
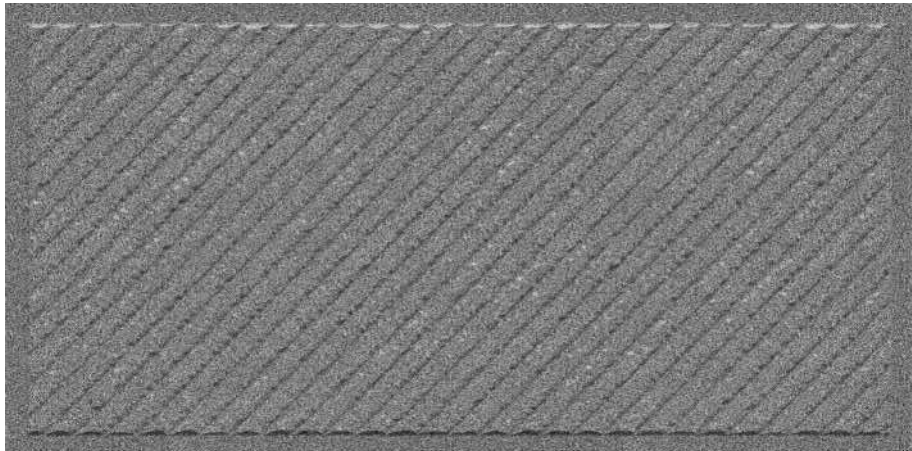


OBLIQUE GRIS



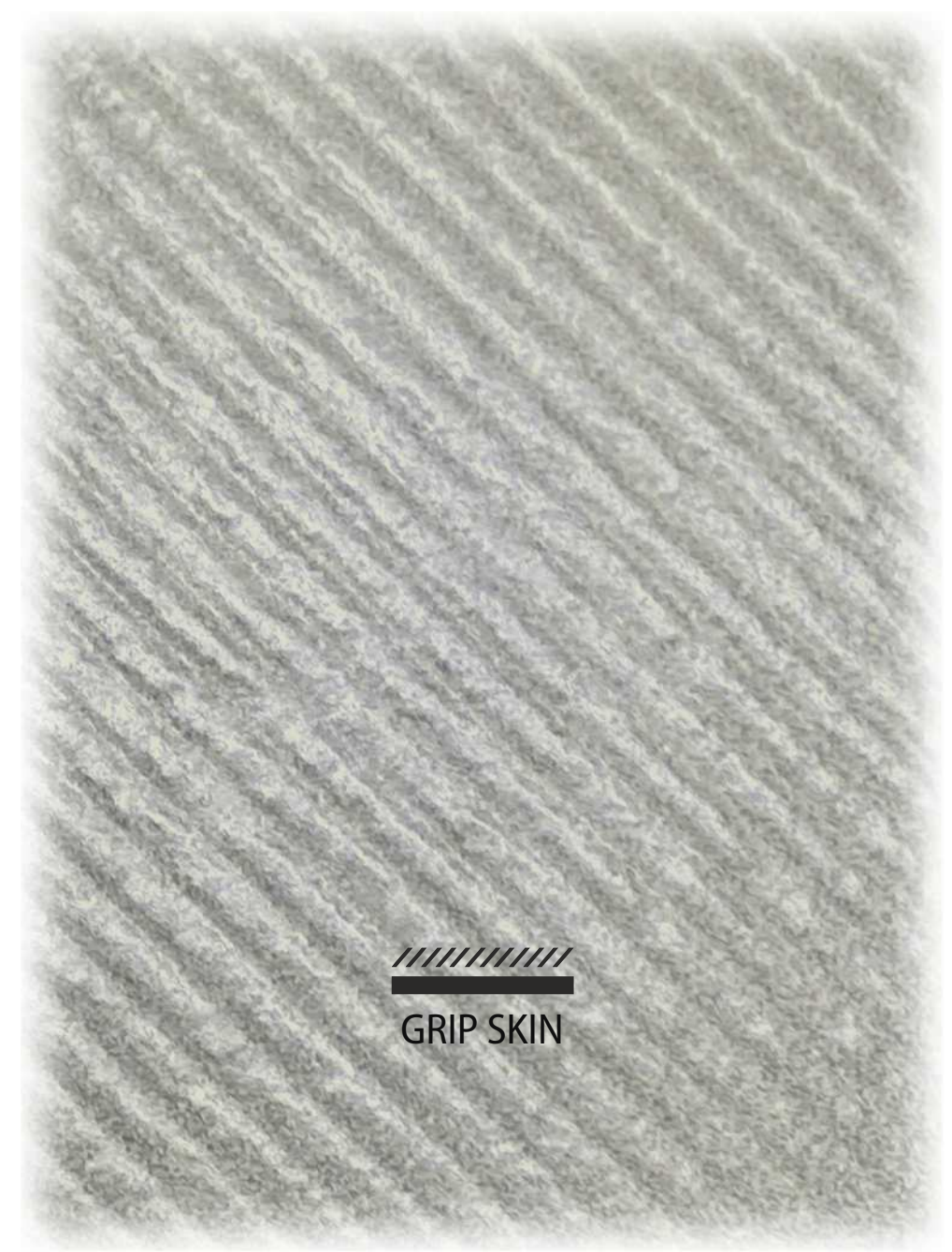
Joint colour / Suggested grouting

Dark Grey 104



OBLIQUE NERO

« THE VIBRANT ENERGY OF THE SURFACE »





OBLIQUE SAHARA

Joint colour / Suggested grouting

 Sand Stone 122







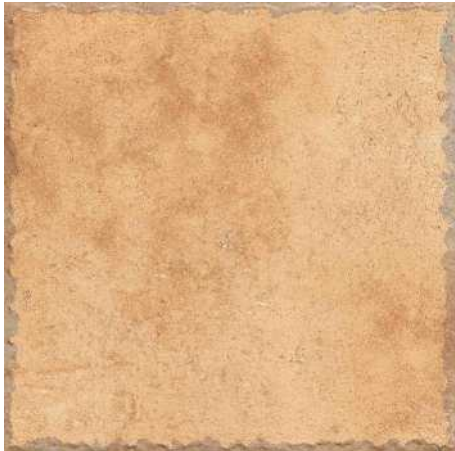
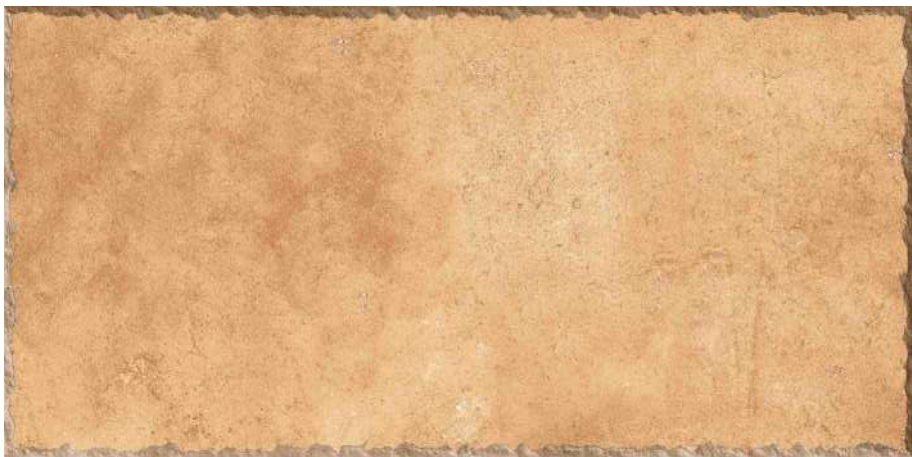
Joint colour / Suggested grouting



Sahara Gold 131

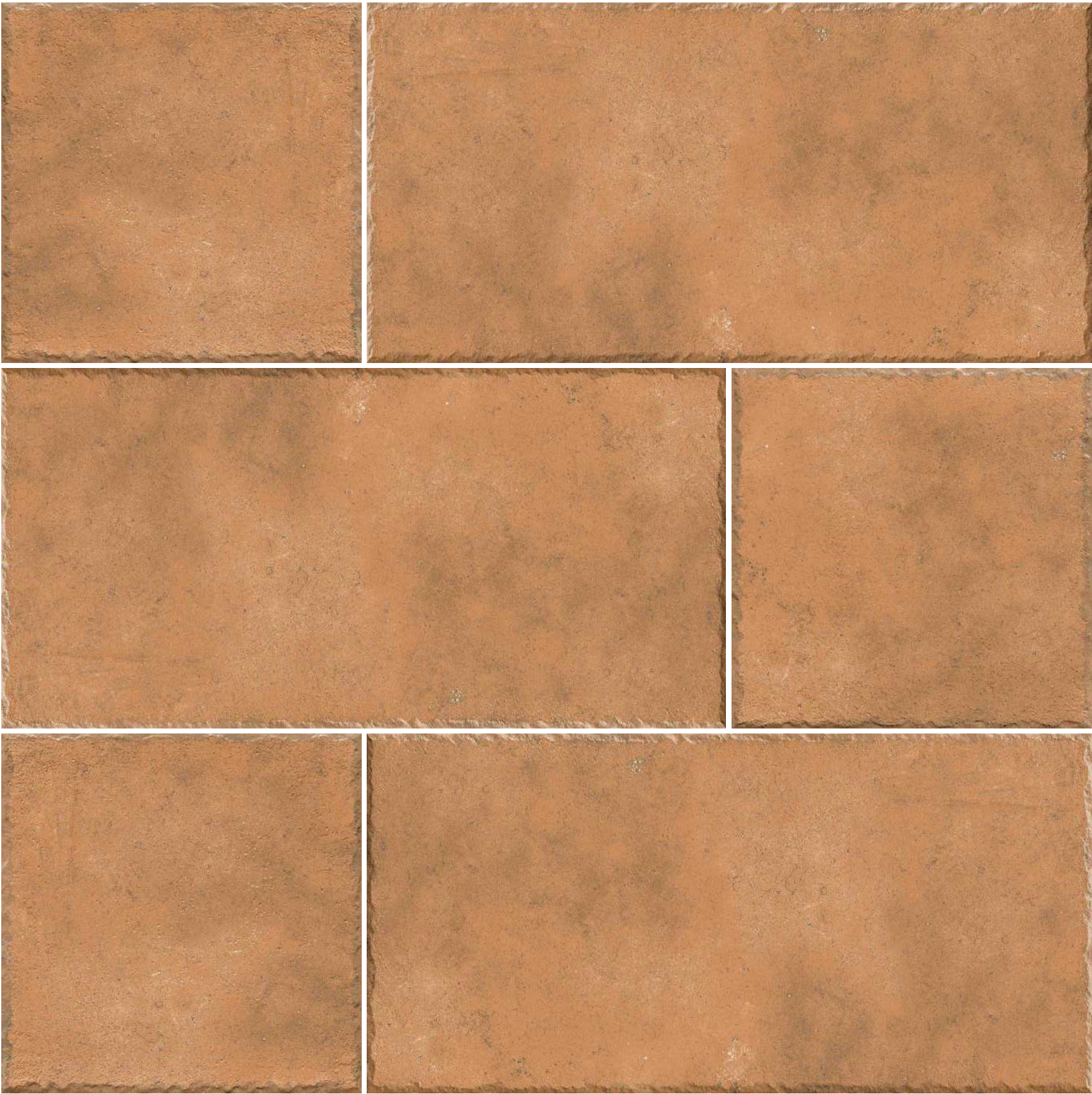


Hemp 108



Decor

JAIPUR GOLDEN



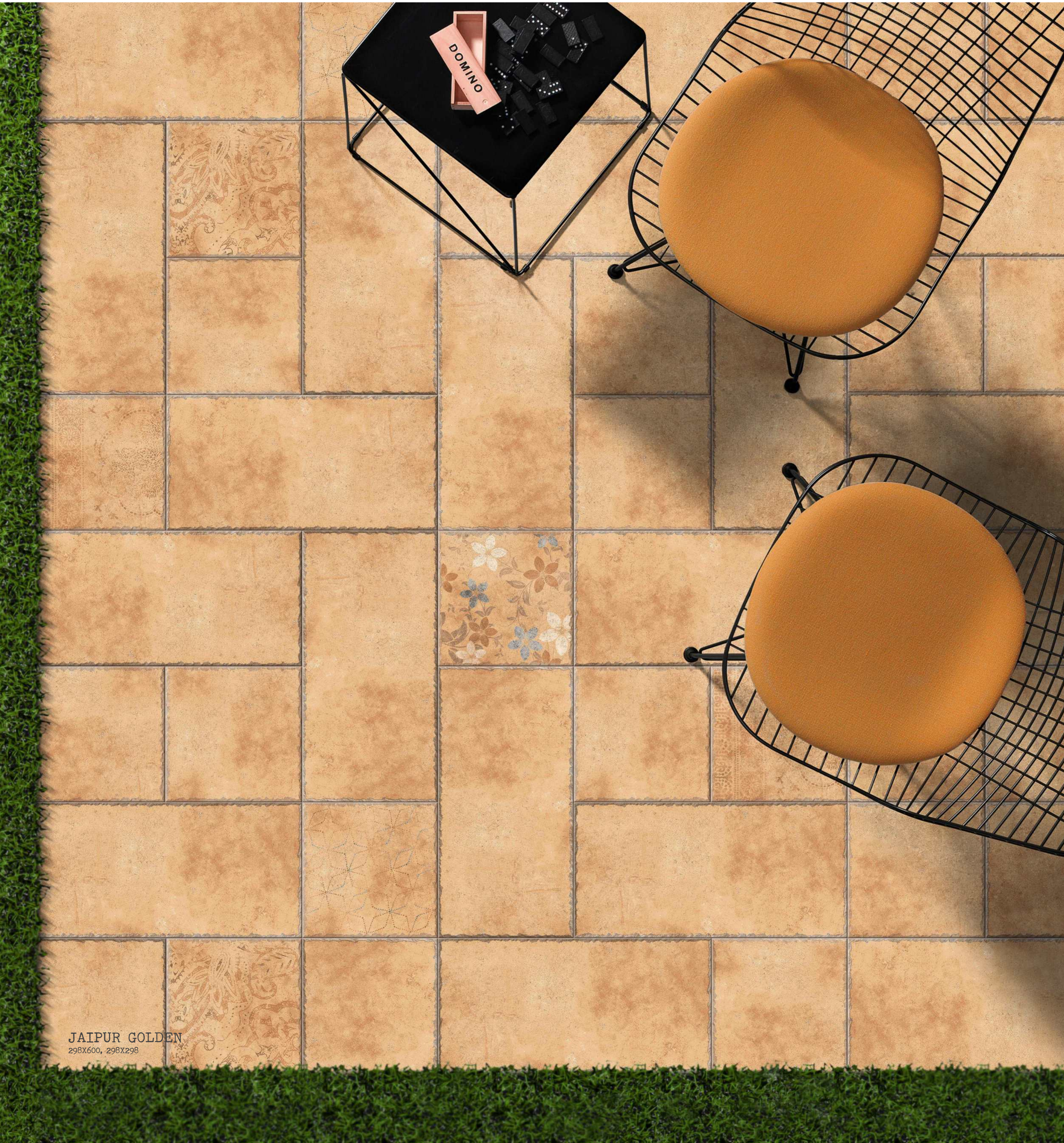
Joint colour / Suggested grouting



Dusty Rose 110



JAIPUR COTTO





Joint colour / Suggested grouting

 Smoke Grey 103



Décor

ONYX MOSAIC



Joint colour / Suggested grouting

 Stone Beach 126



Décor

JASPER MOSAIC



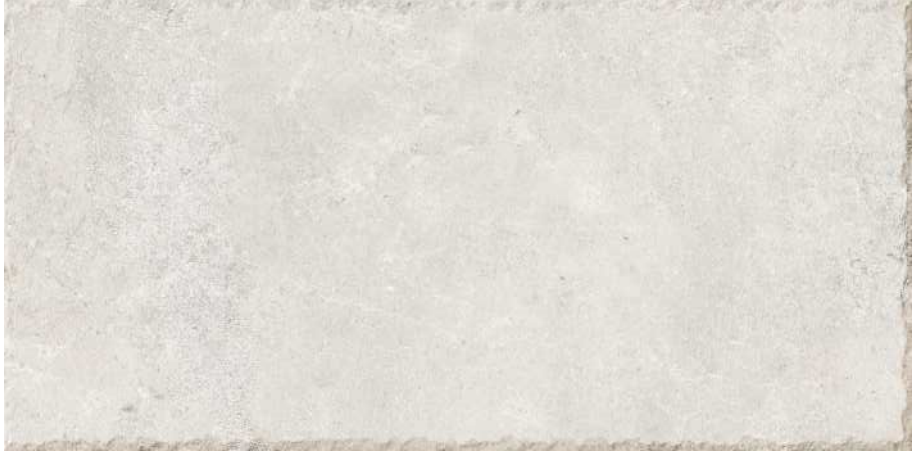


ONYX MOSAIC
298X600, 298X298

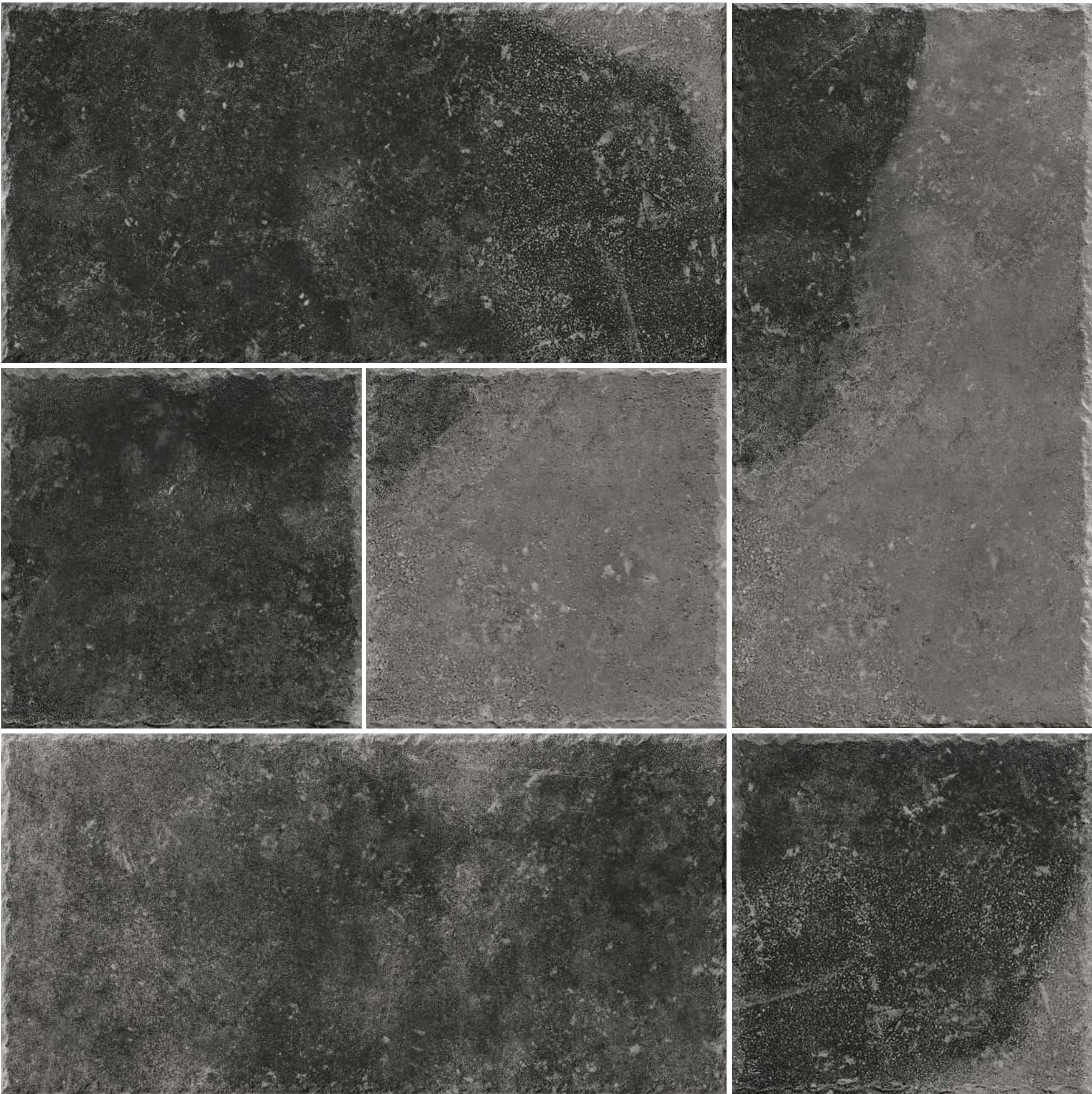


Joint colour / Suggested grouting

Silver Shadow 106



SAND CRUST



Joint colour / Suggested grouting

Dark Grey 104

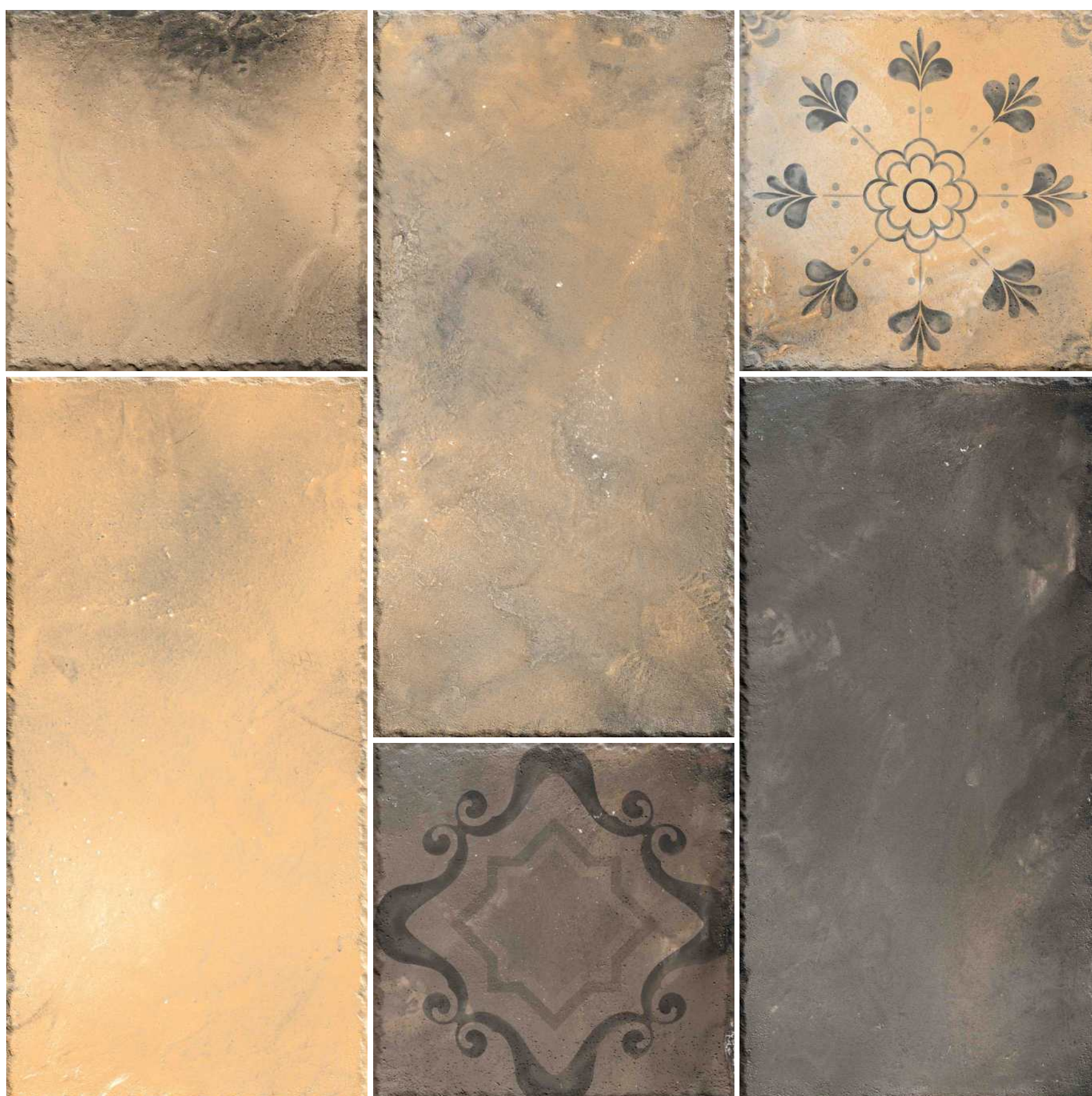


KNIGHT STONE





KNIGHT STONE
298x600, 298x298



Decor

RETRICA ROMANO

Joint colour / Suggested grouting

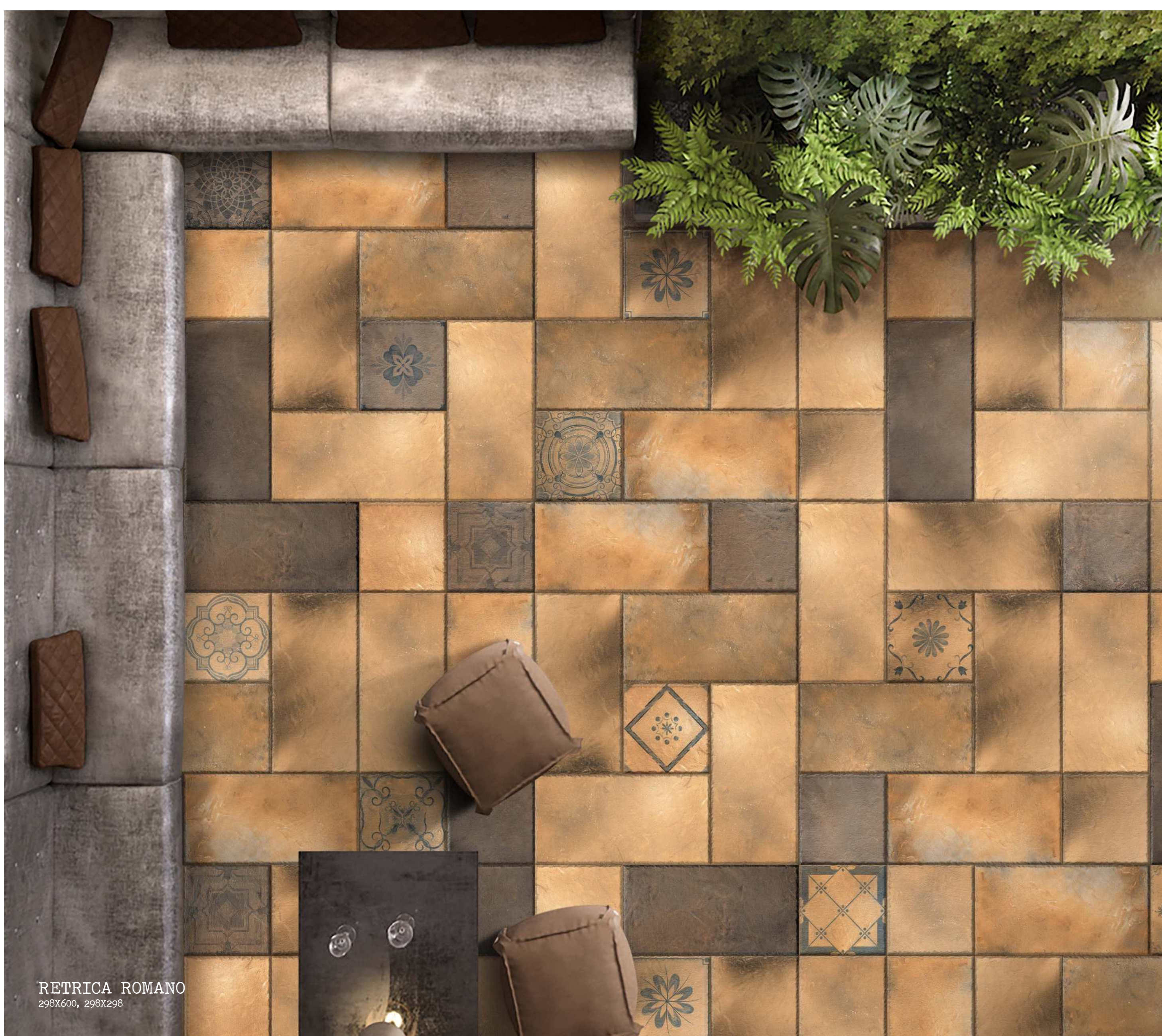


Dark Grey 104



Stone Beach 126

HAMMERED EDGE
FINISHED



RETRICA ROMANO
298X600, 298X298



SIGMA BROWN



VOLCANO

OUTDOOR SENSATIONS





OPEN AIR COMFORT

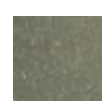


LAGUNA LIGHT GREY
298X600, 298X298



RIVER PLATINA

Joint colour / Suggested grouting



Smoke Grey 103

HAMMERED EDGE
FINISHED



RIVER PLATINA
298X600, 298X298



MODULO FUSION

Joint colour / Suggested grouting

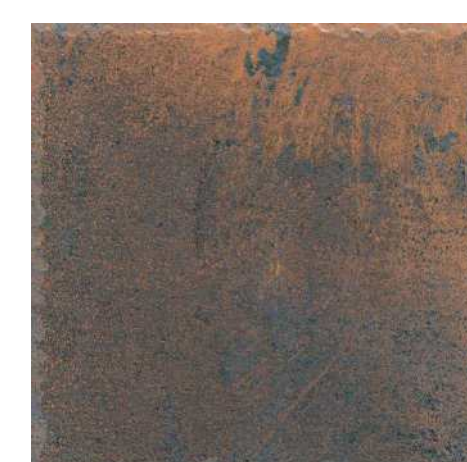
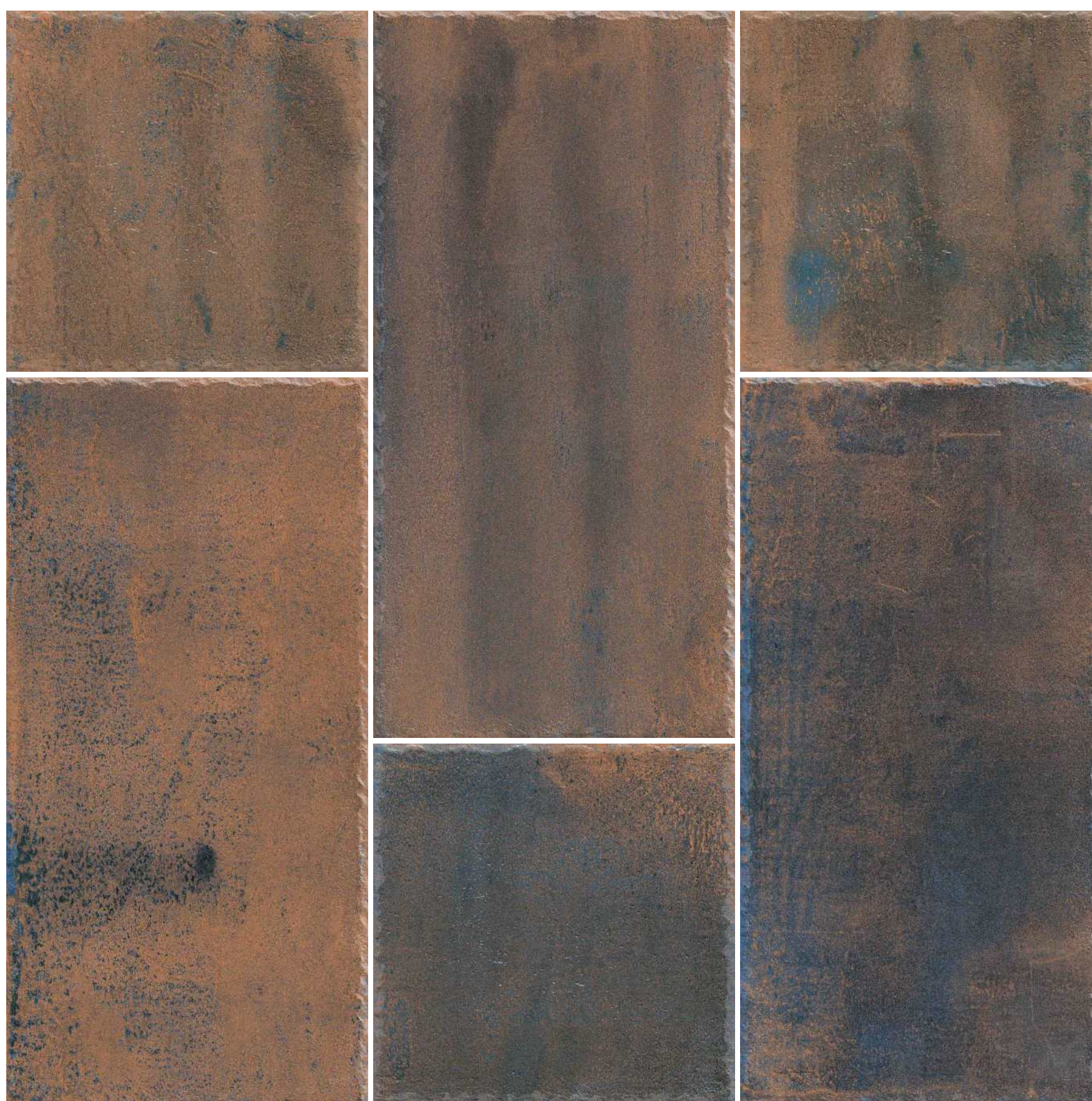


Light Grey 105

HAMMERED EDGE
FINISHED



MODULO FUSION
298X600, 298X298



CARBONIO BRONZ

Joint colour / Suggested grouting

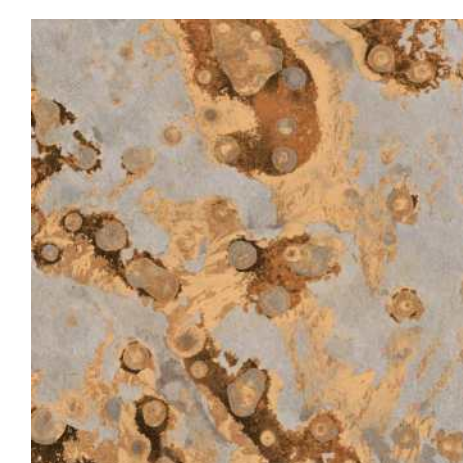
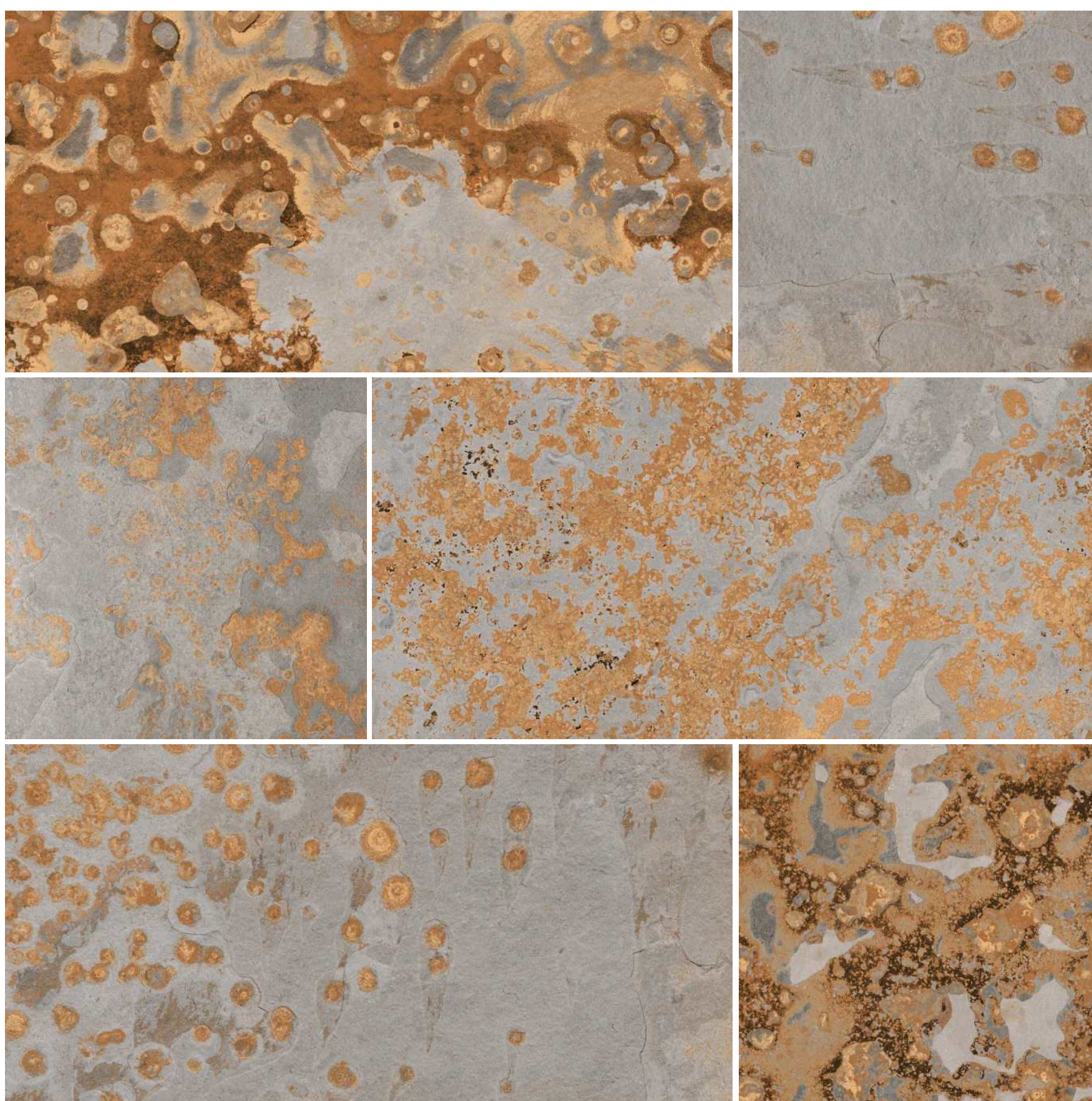


Cyan 128

HAMMERED EDGE
FINISHED



CARBONIO BRONZ
298X600, 298X298



FUSION DARK

Joint colour / Suggested grouting



Dusty Rose 110



Stone Beach 126

SOFT STRUCTURED
FINISHED



FUSION DARK
298X600, 298X298



SMOKE STONE

Joint colour / Suggested grouting



Smoke Grey 103



Dark Grey 104

HAMMERED EDGE
FINISHED



SMOKE STONE
298X600, 298X298



Joint colour / Suggested grouting

 Mocha 114



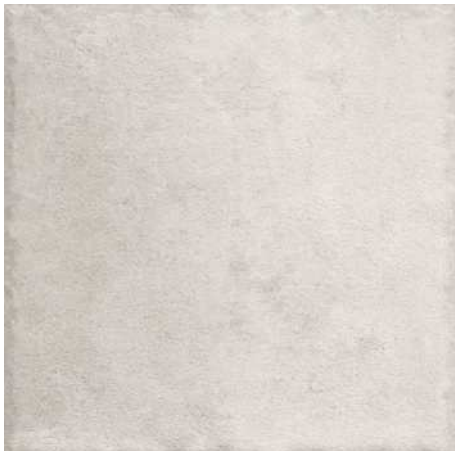
CASA MILA



Joint colour / Suggested grouting

 Silver Shadow 106

 Ocean Blue 127

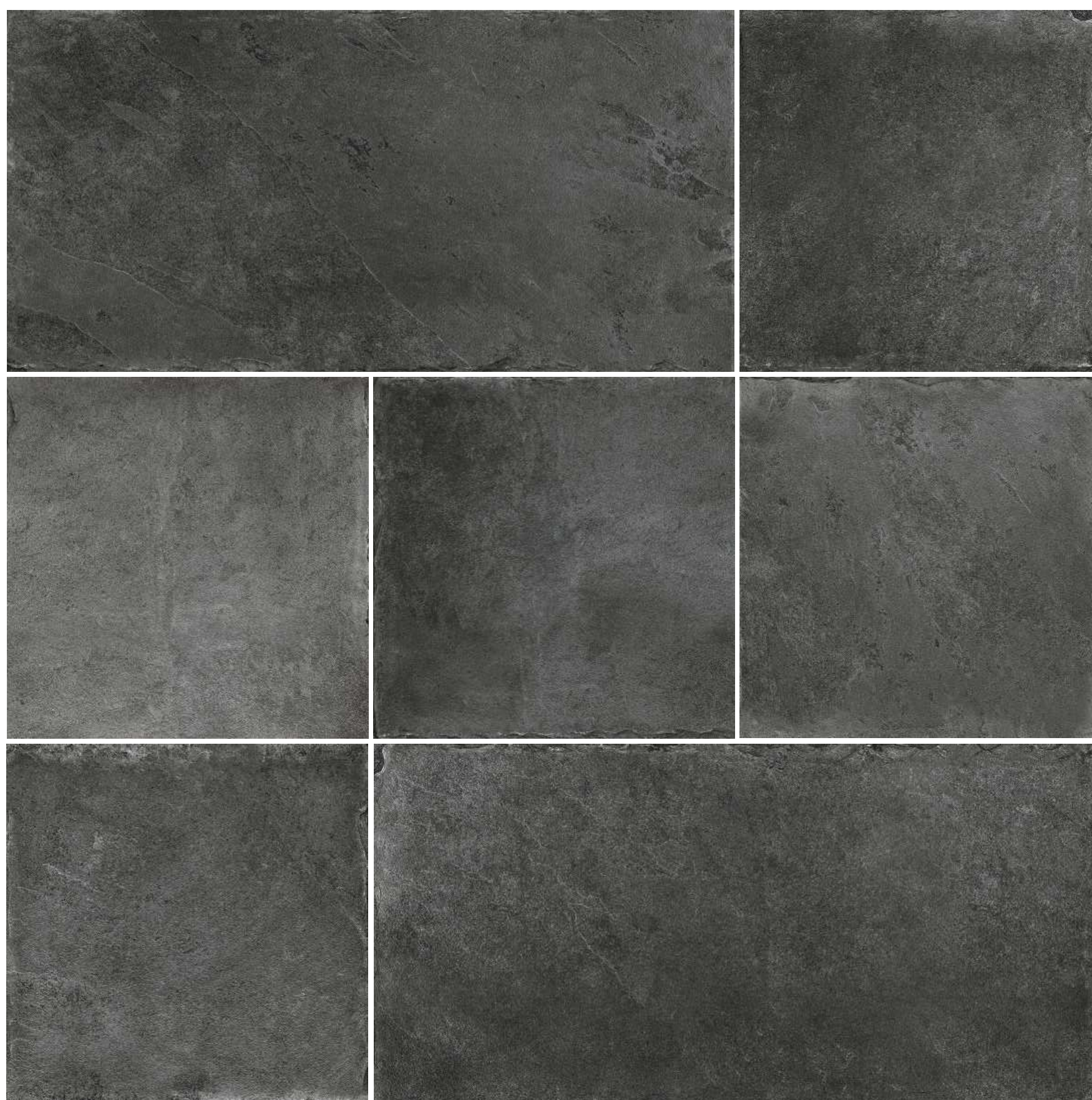


PERE MILA





PERE MILA
298X600, 298X298



DURBAN BLACK

Joint colour / Suggested grouting



Dark Grey 104

HAMMERED EDGE
FINISHED



DURBAN BLACK
298X600, 298X298



3082 TEAK STONE

Joint colour / Suggested grouting

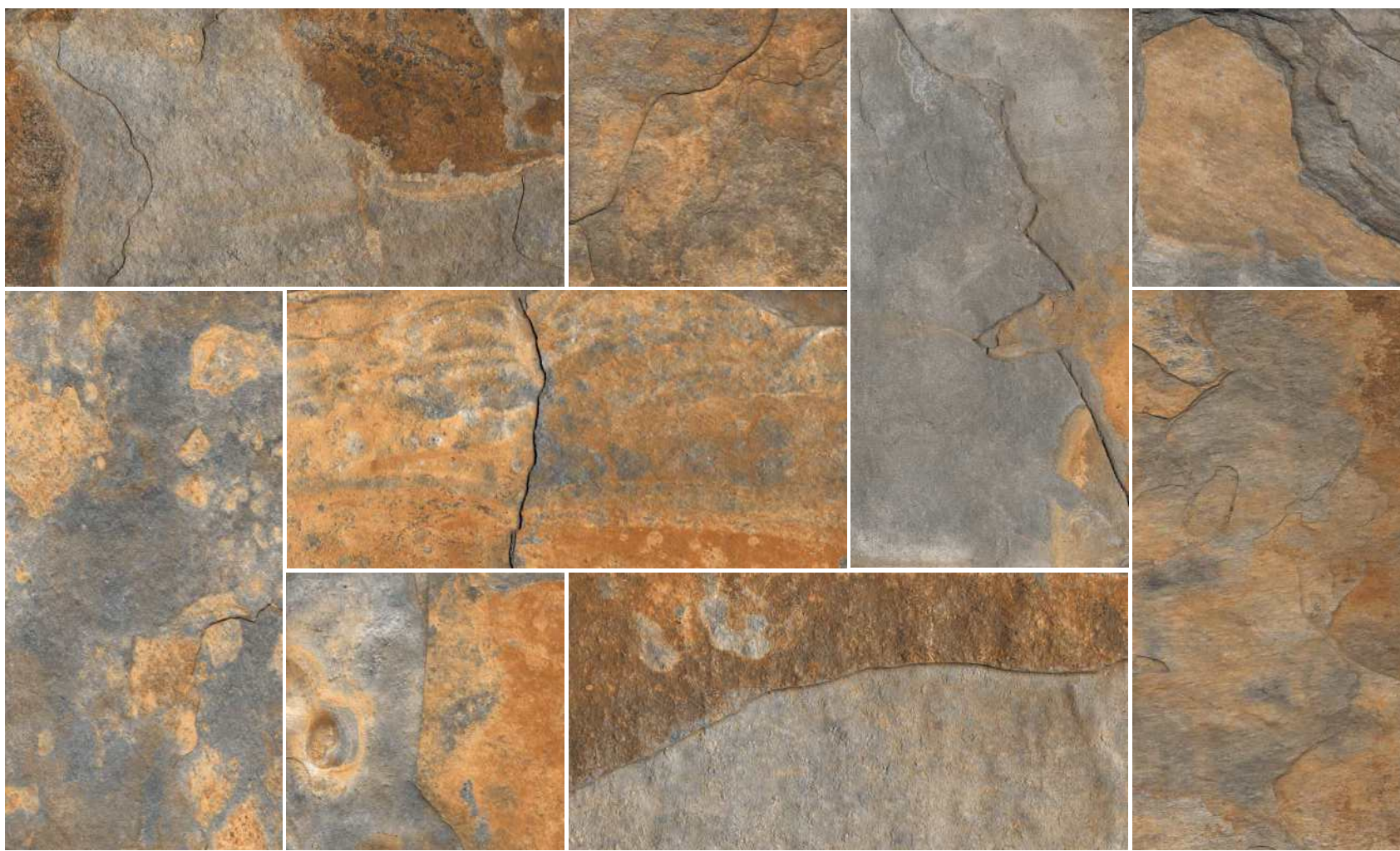


Parchment 123

STONE
FINISHED



TEAK STONE
298x600



3131 SUMI STONE

Joint colour / Suggested grouting



Hemp 108

STONE
FINISHED



SUMI STONE
298X600



MODULAR

PATIO-PACK
4 SIZE FORMATS

The authentic feeling of stone paving is enhanced by the multi format laying rich in different shades and vintage effect edges.

MODULAR

298X600 / 298X298 / 147X298 / 147X147



STONE
FINISHED



29.8x60



29.8x29.8



14.7x29.8



14.7x14.7

3131 SUMI STONE



HAMMERED EDGE
FINISHED



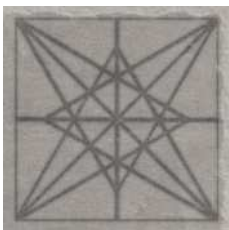
29.8x60



29.8x29.8



14.7x29.8

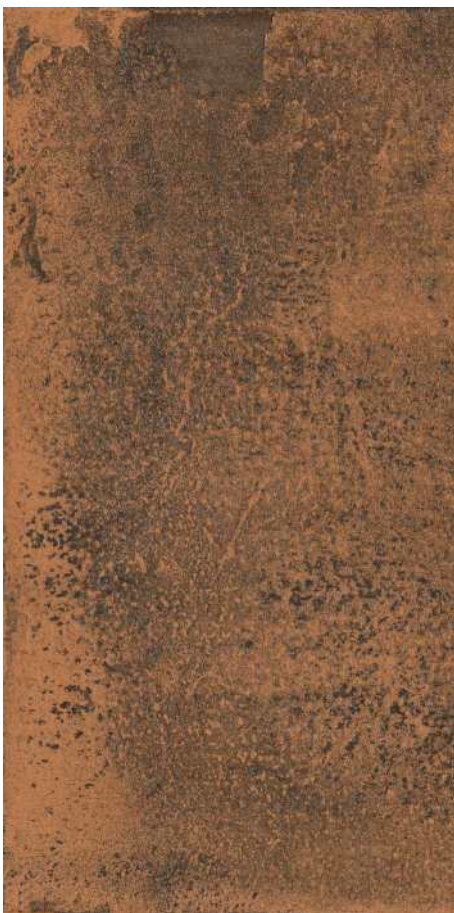


14.7x14.7

RIVER PLATINA



SOFT STRUCTURED
FINISHED



29.8x60



29.8x29.8



14.7x29.8



14.7x14.7

IRON OXIDE



STONE
FINISHED



29.8x60



29.8x29.8



14.7x29.8



14.7x14.7

3082 TEAK STONE

A STYLISH
WELCOME



SOFT STRUCTURED SKIN



IRON OXIDE
298X600, 298X298
147X298, 147X147

Joint colour / Suggested grouting



Dusty Rose 110



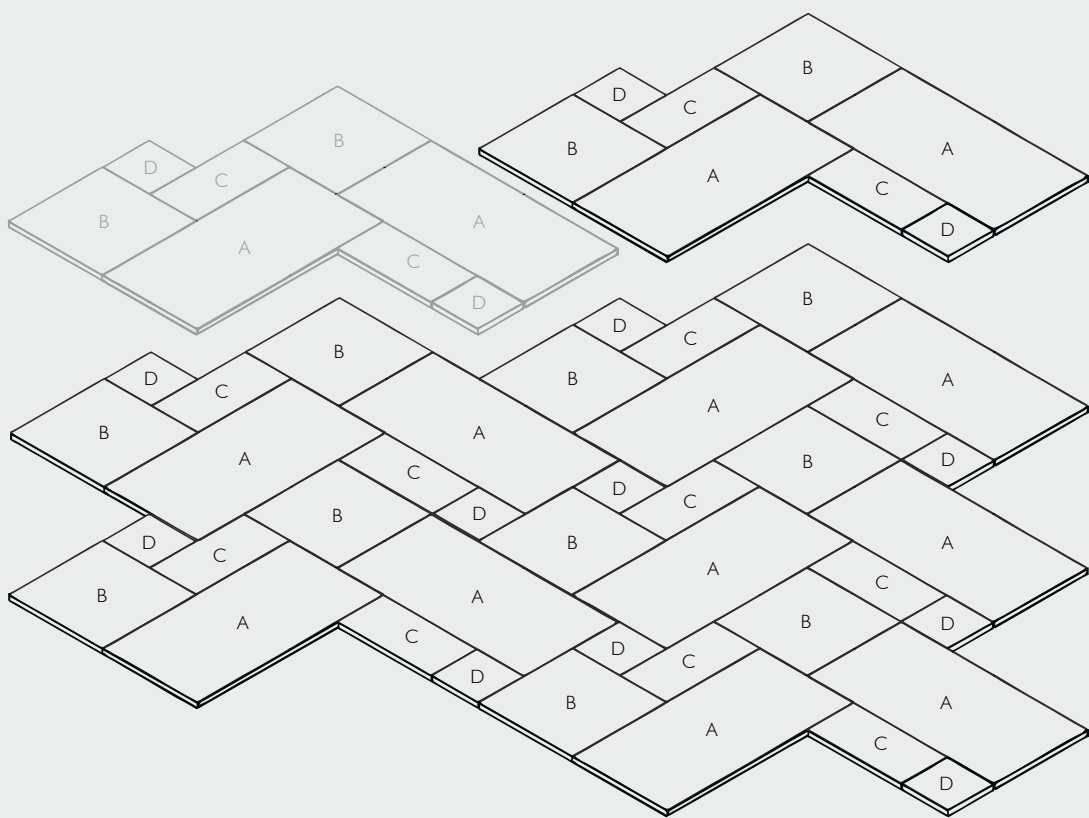
Burgundy 113

STONE LOOK



Modern
MINIMALISM

MODULAR LAYING PATTERN



RIVER PLATINA
298X600, 298X298
147X298, 147X147

Joint colour / Suggested grouting



Smoke Grey 103



TEAK STONE
298X600, 298X298
147X298, 147X147

Joint colour / Suggested grouting



Parchment 123

HAMMERED EDGE
FINISHED



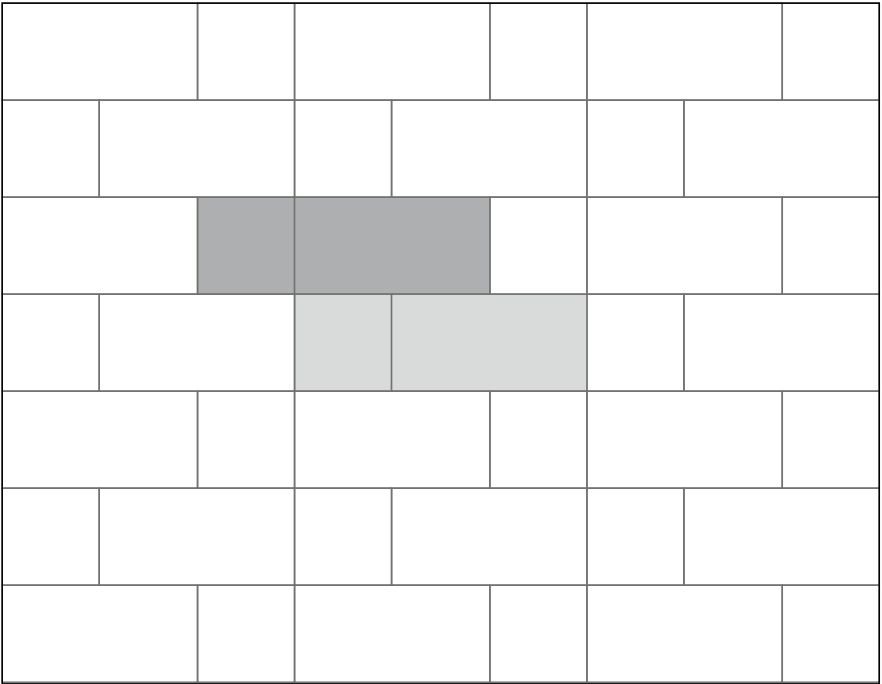
COTTO NATURAL
298x600, 147x147 Inserts



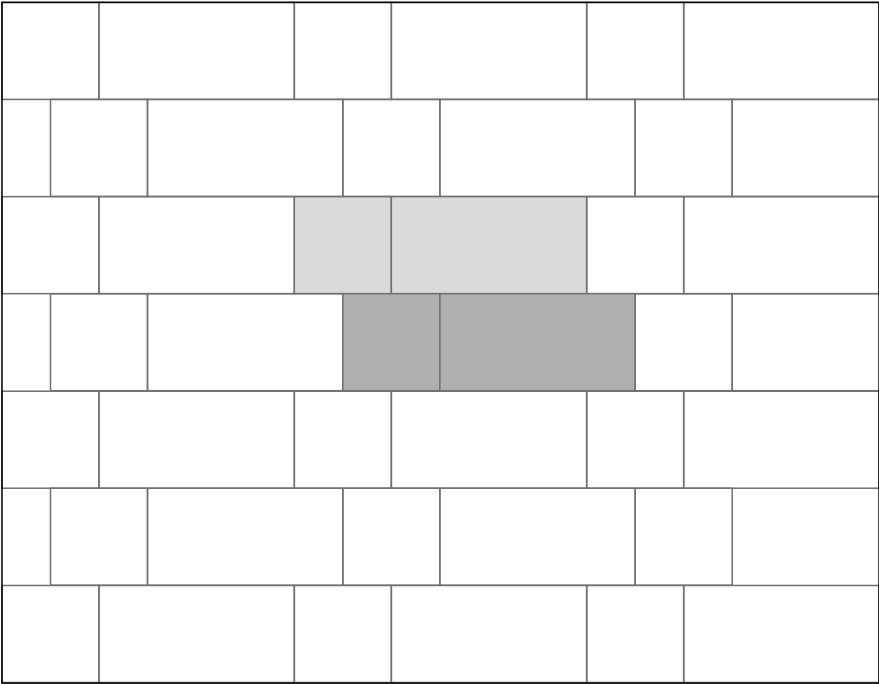
Inserts

COTTO NATURAL

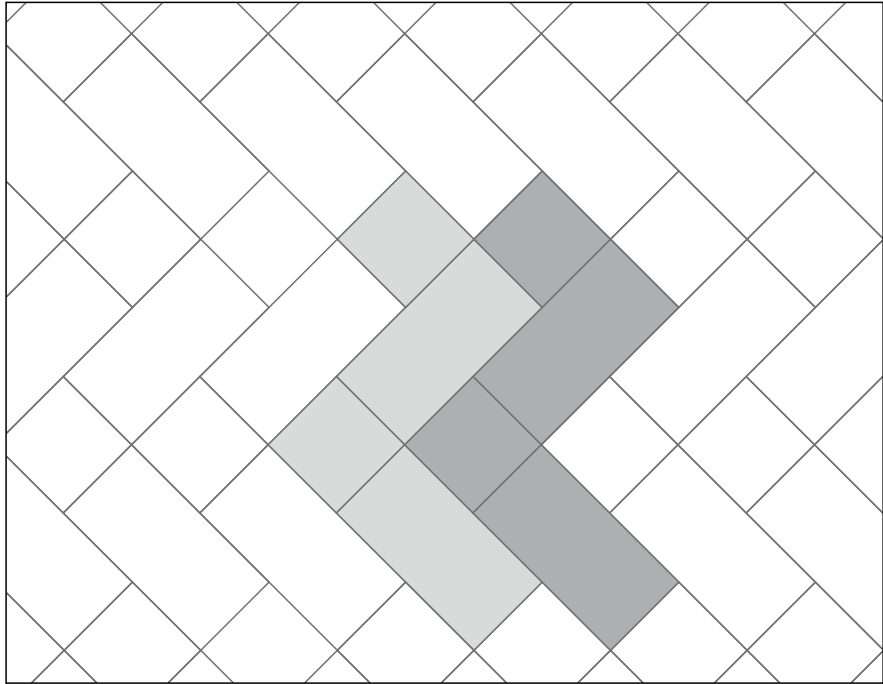
2 SIZEs



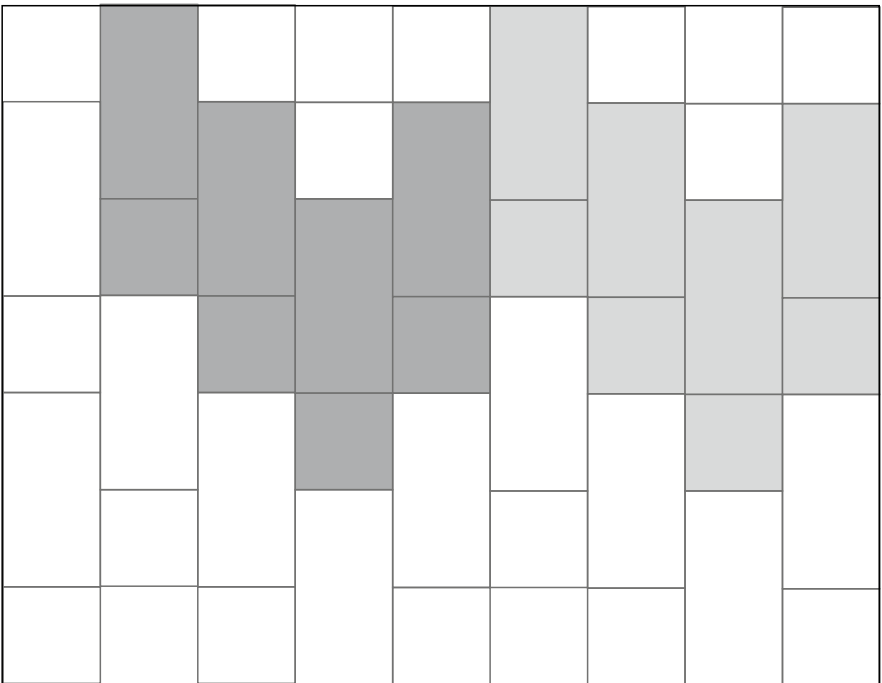
30x60 - 67% | 30x30 - 33%



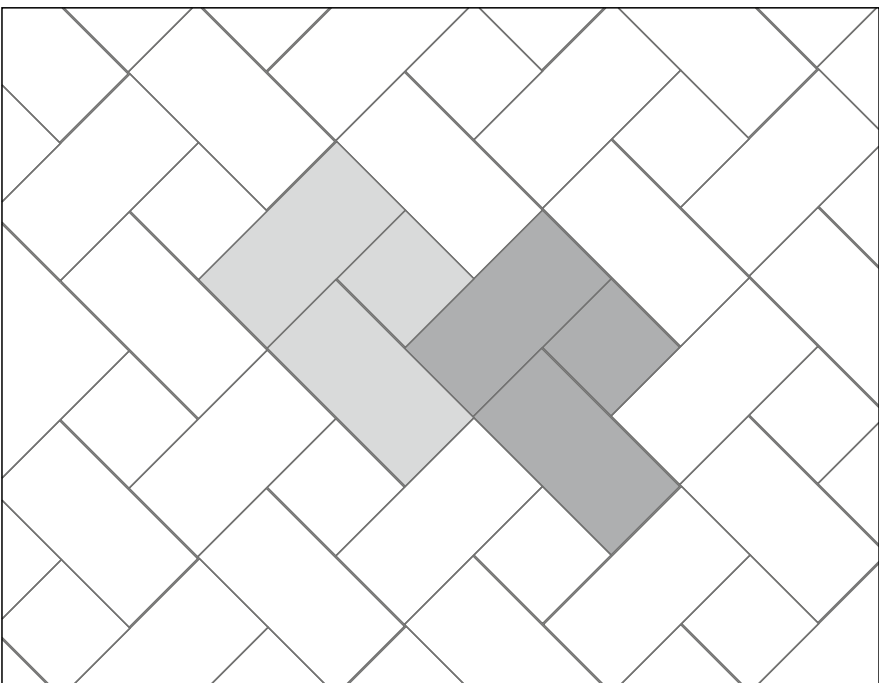
30x60 - 67% | 30x30 - 33%



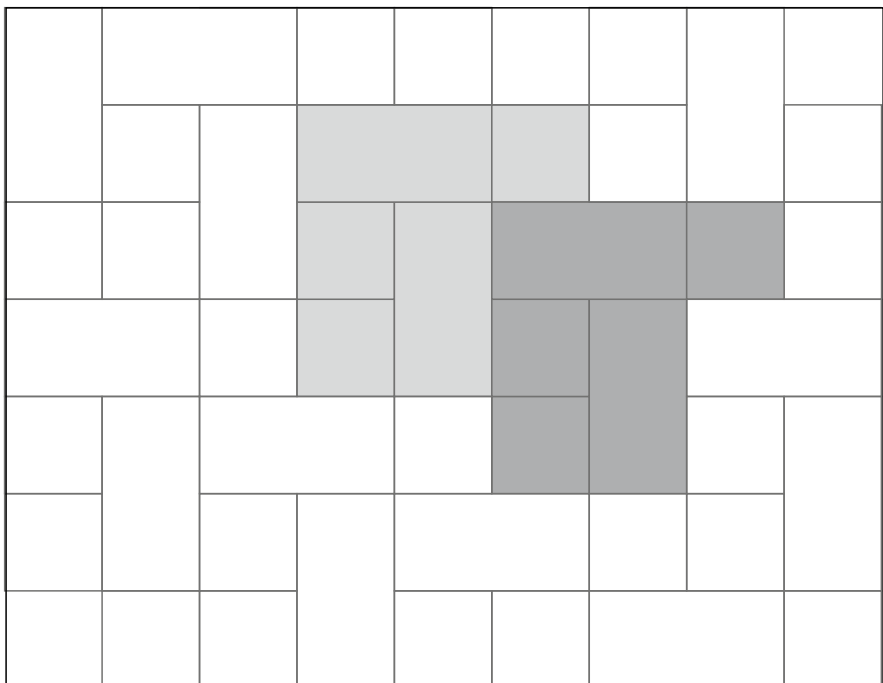
30x60 - 67% | 30x30 - 33%



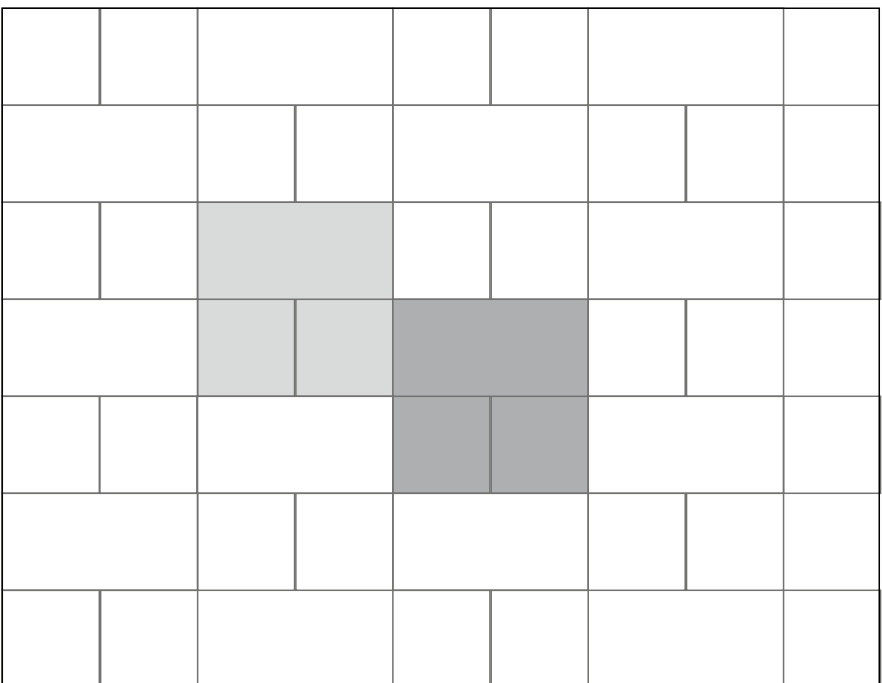
30x60 - 67% | 30x30 - 33%



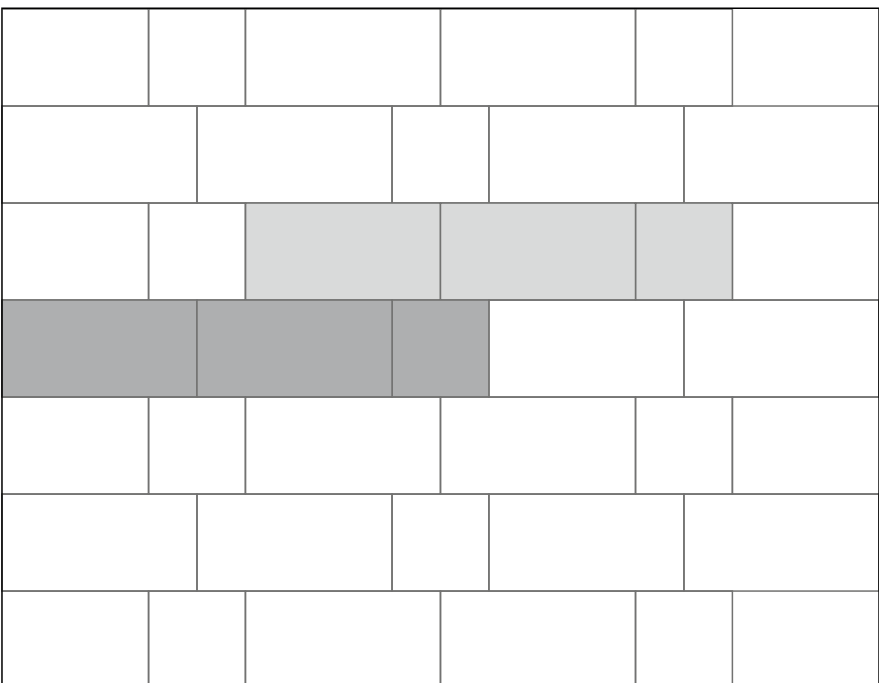
30x60 - 80% | 30x30 - 20%



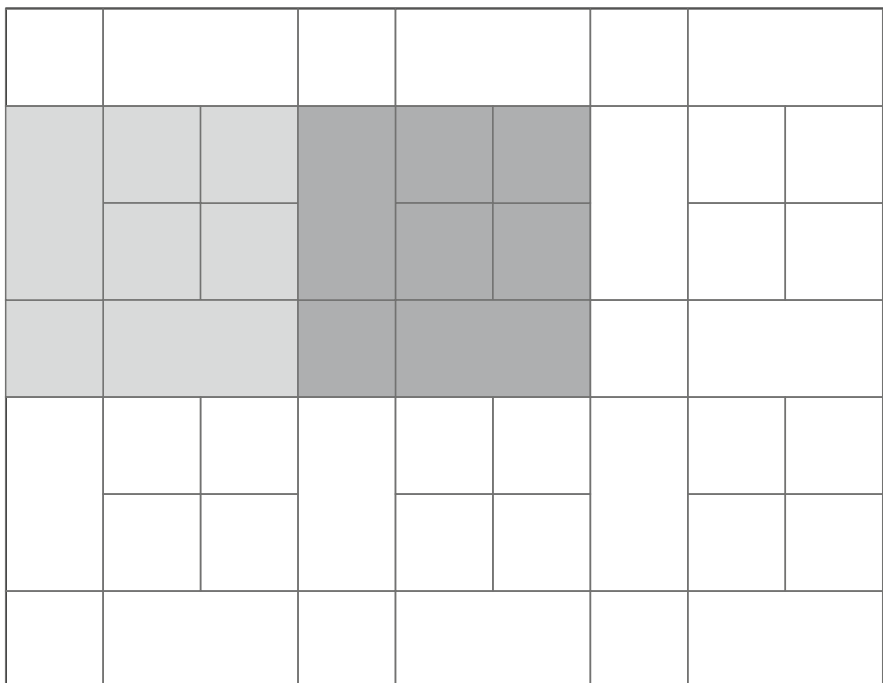
30x60 - 57% | 30x30 - 43%



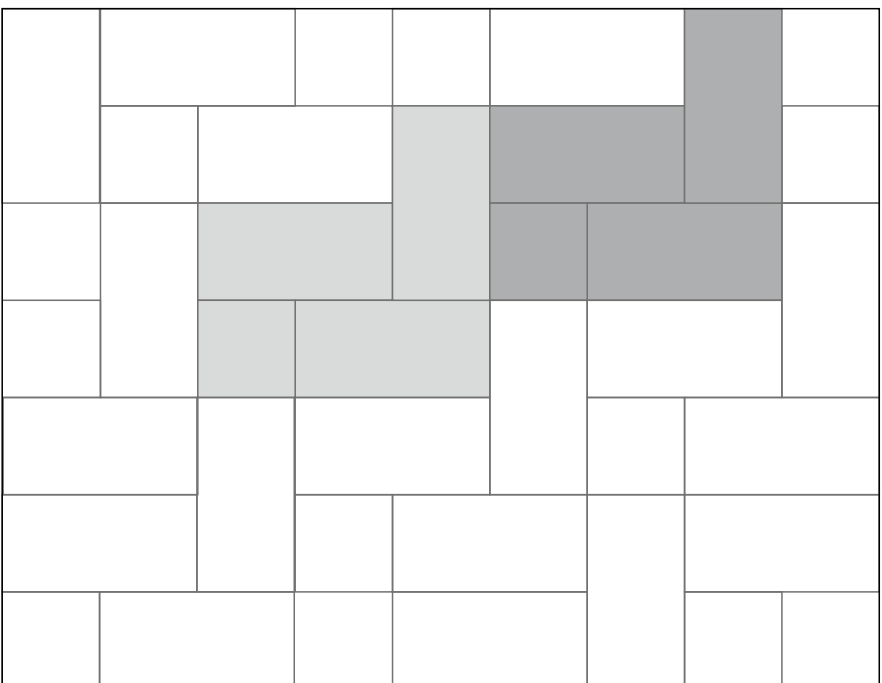
30x60 - 50% | 30x30 - 50%



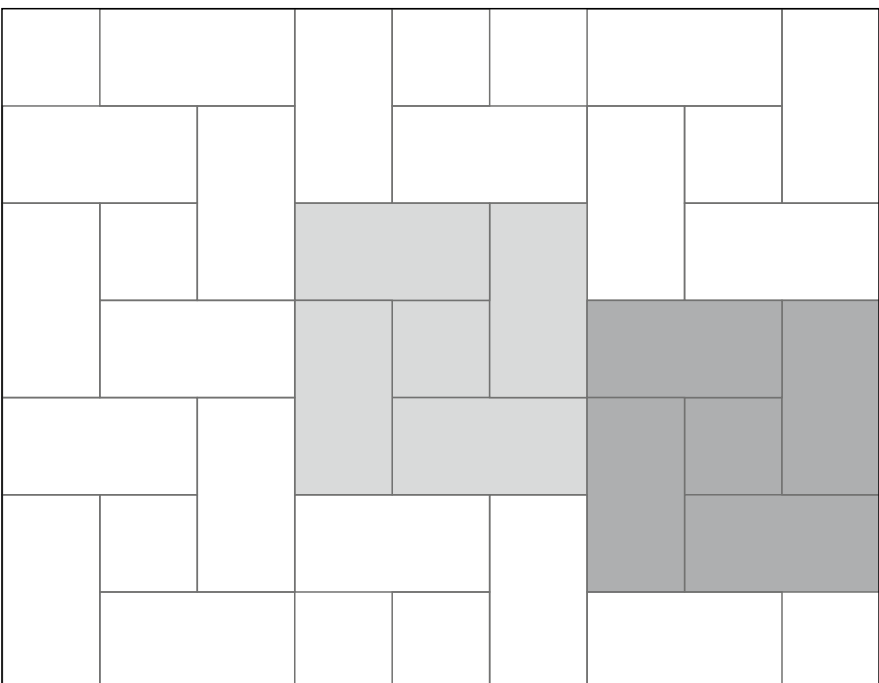
30x60 - 80% | 30x30 - 20%



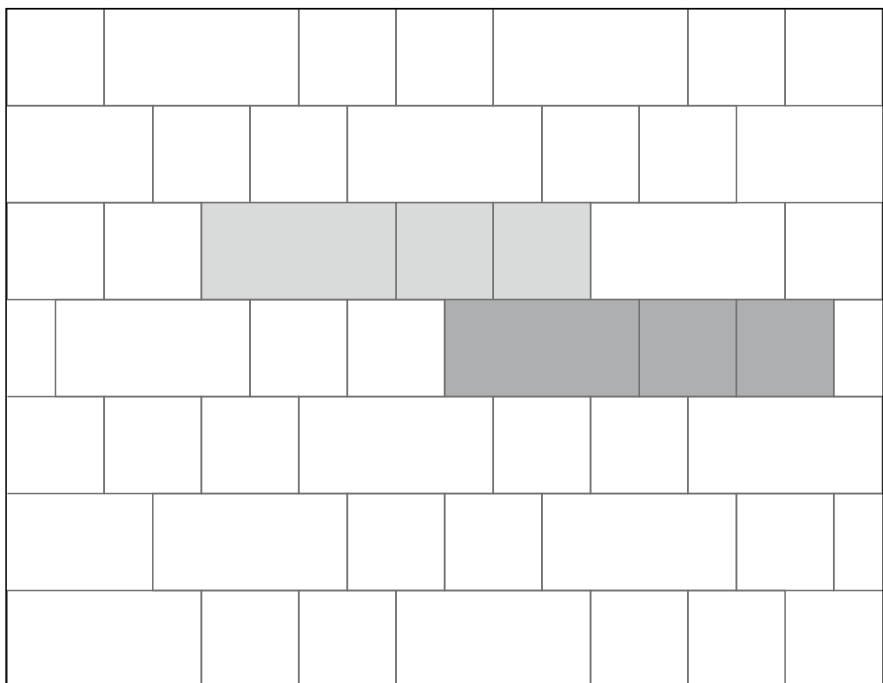
30x60 - 45% | 30x30 - 55%



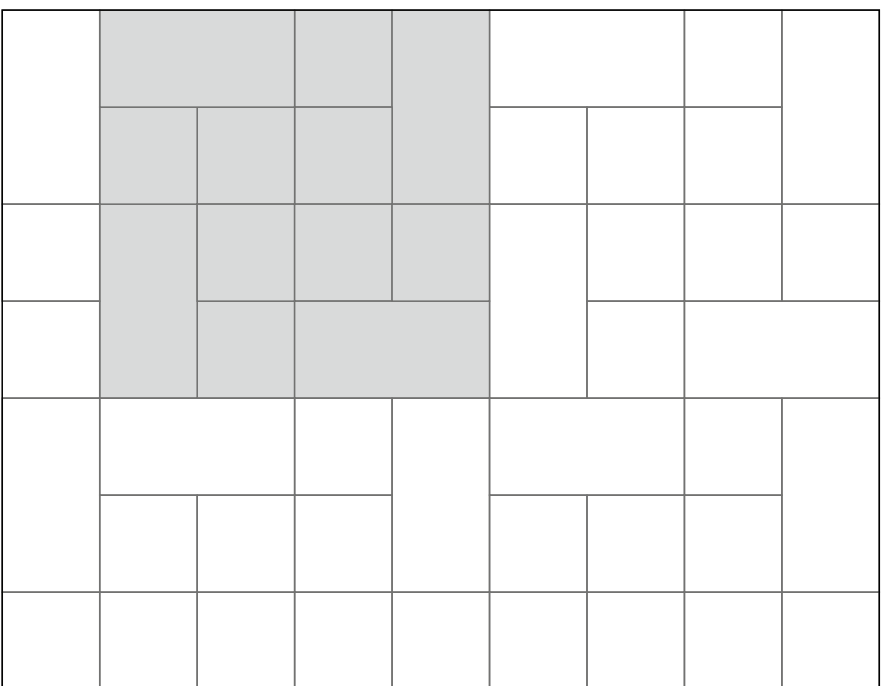
30x60 - 85% | 30x30 - 15%



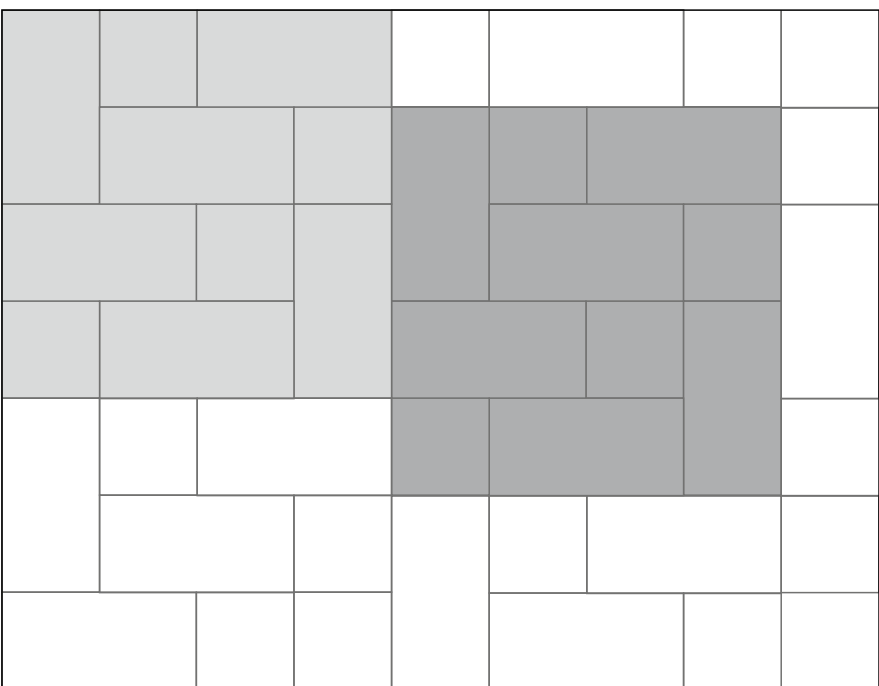
30x60 - 89% | 30x30 - 11%



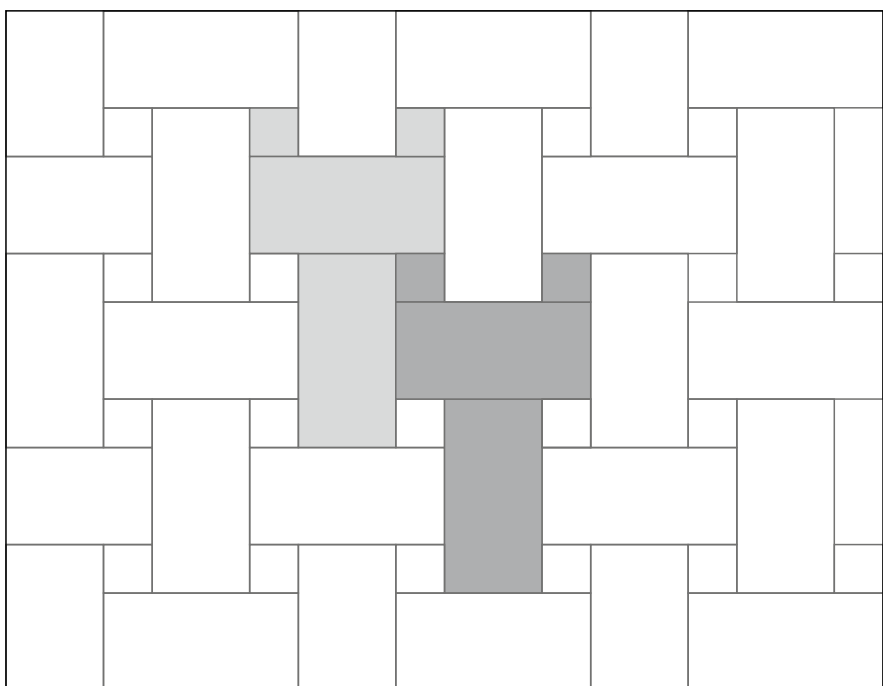
30x60 - 50% | 30x30 - 50%



30x60 - 50% | 30x30 - 50%



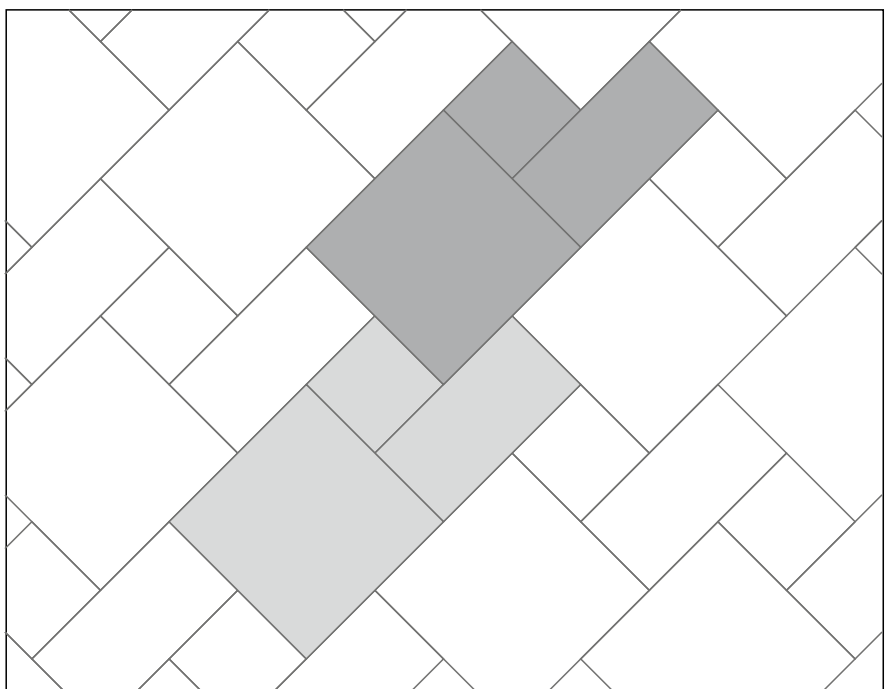
30x60 - 75% | 30x30 - 25%



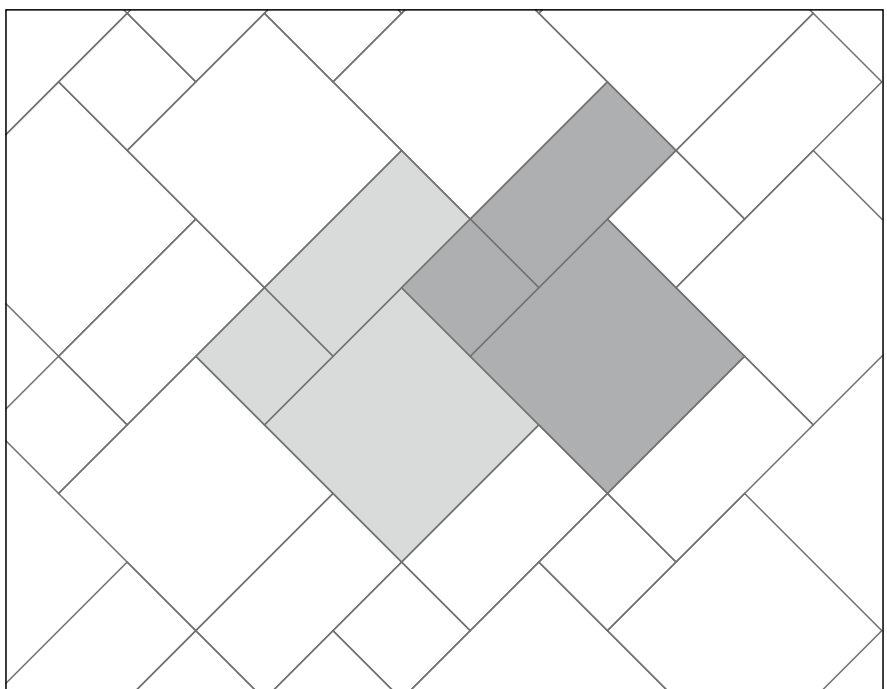
30x60 - 89% | 15x15 - 11%

LAYING PROPOSALS / PATTERNS

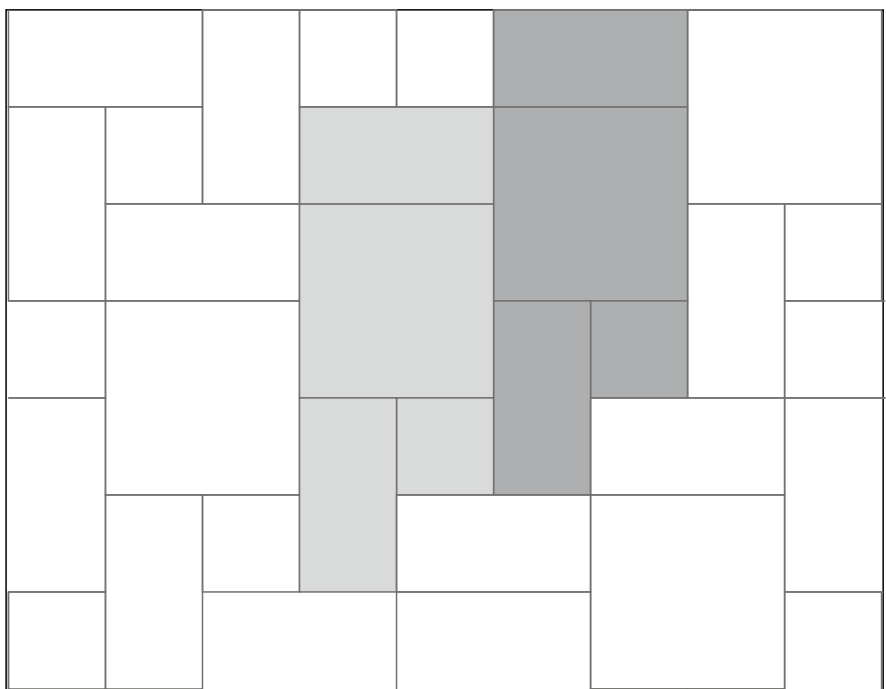
3 SIZES



30x30 - 57% | 15x30 - 29%
15x15 - 14%

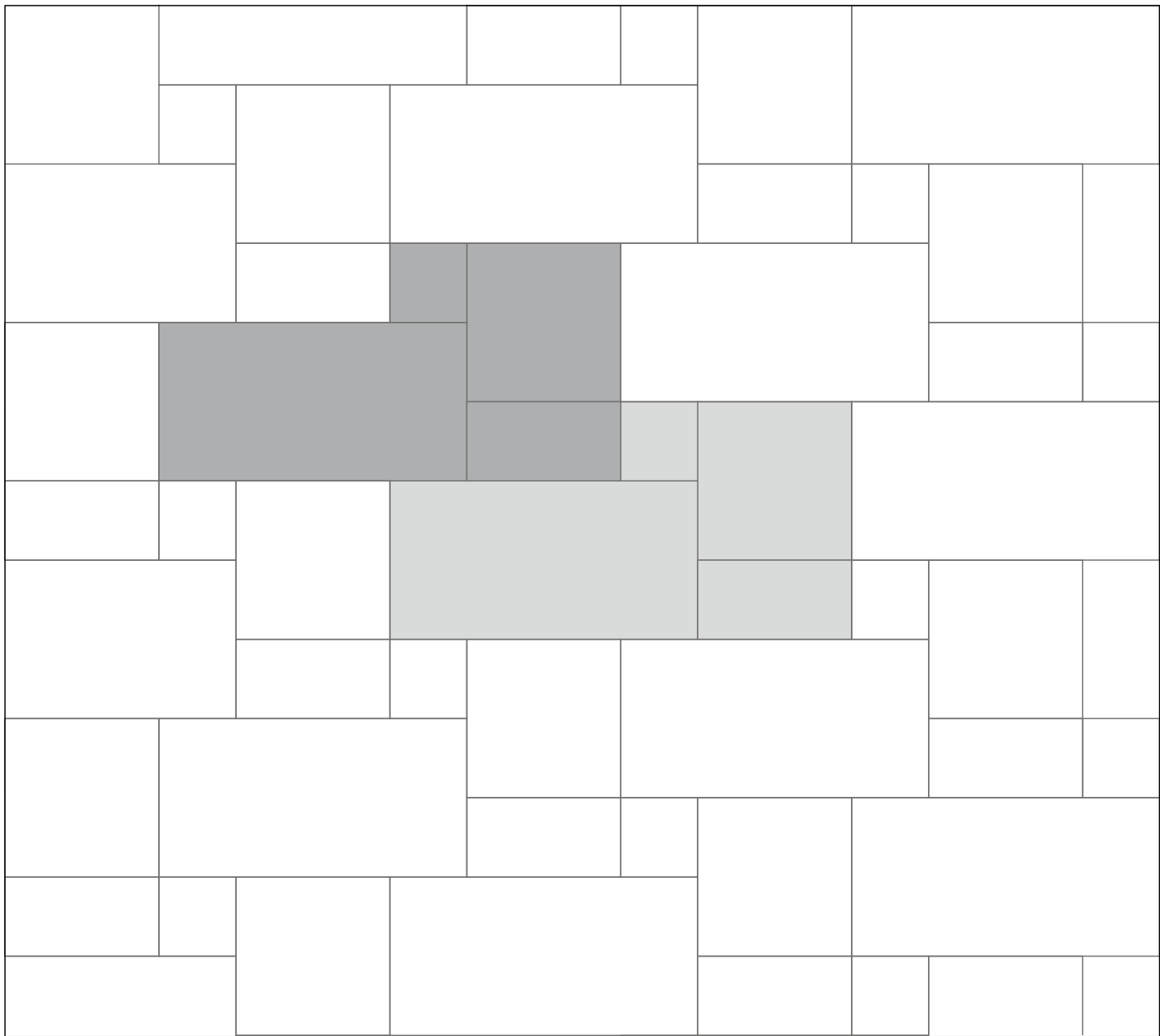


30x30 - 57% | 15x30 - 29%
15x15 - 14%

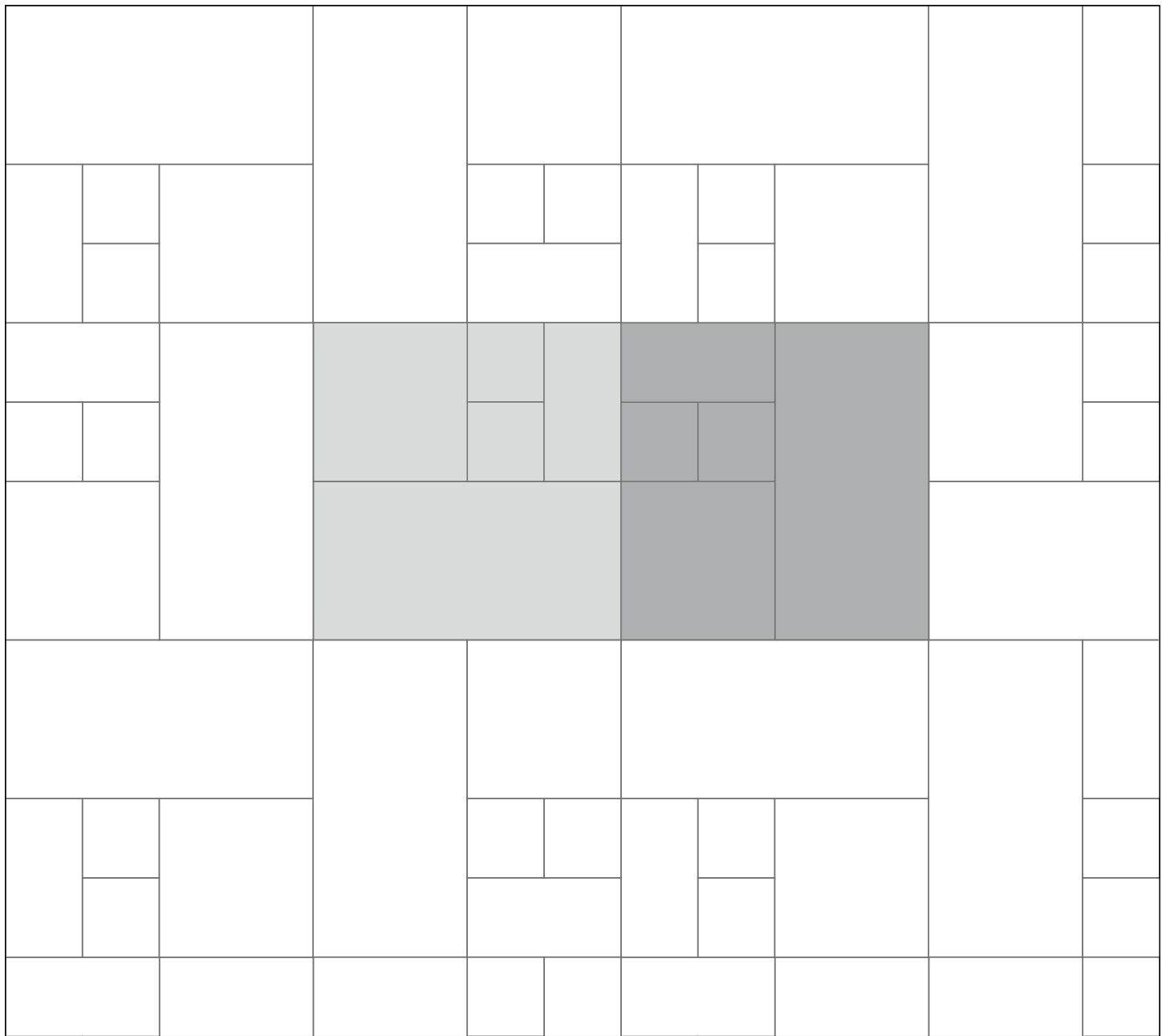


30x30 - 44.5% | 15x30 - 44.5%
15x15 - 11%

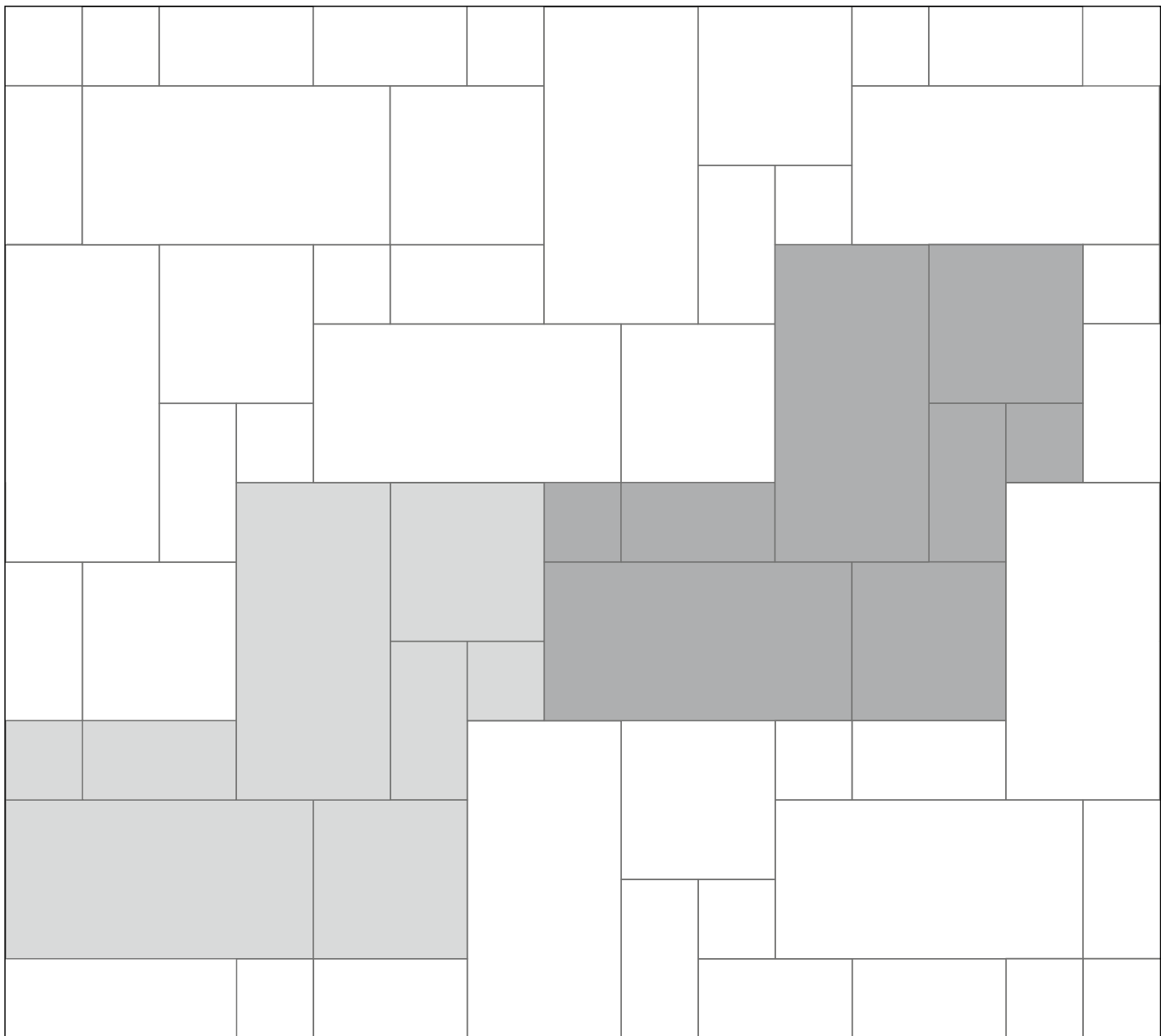
4 SIZES



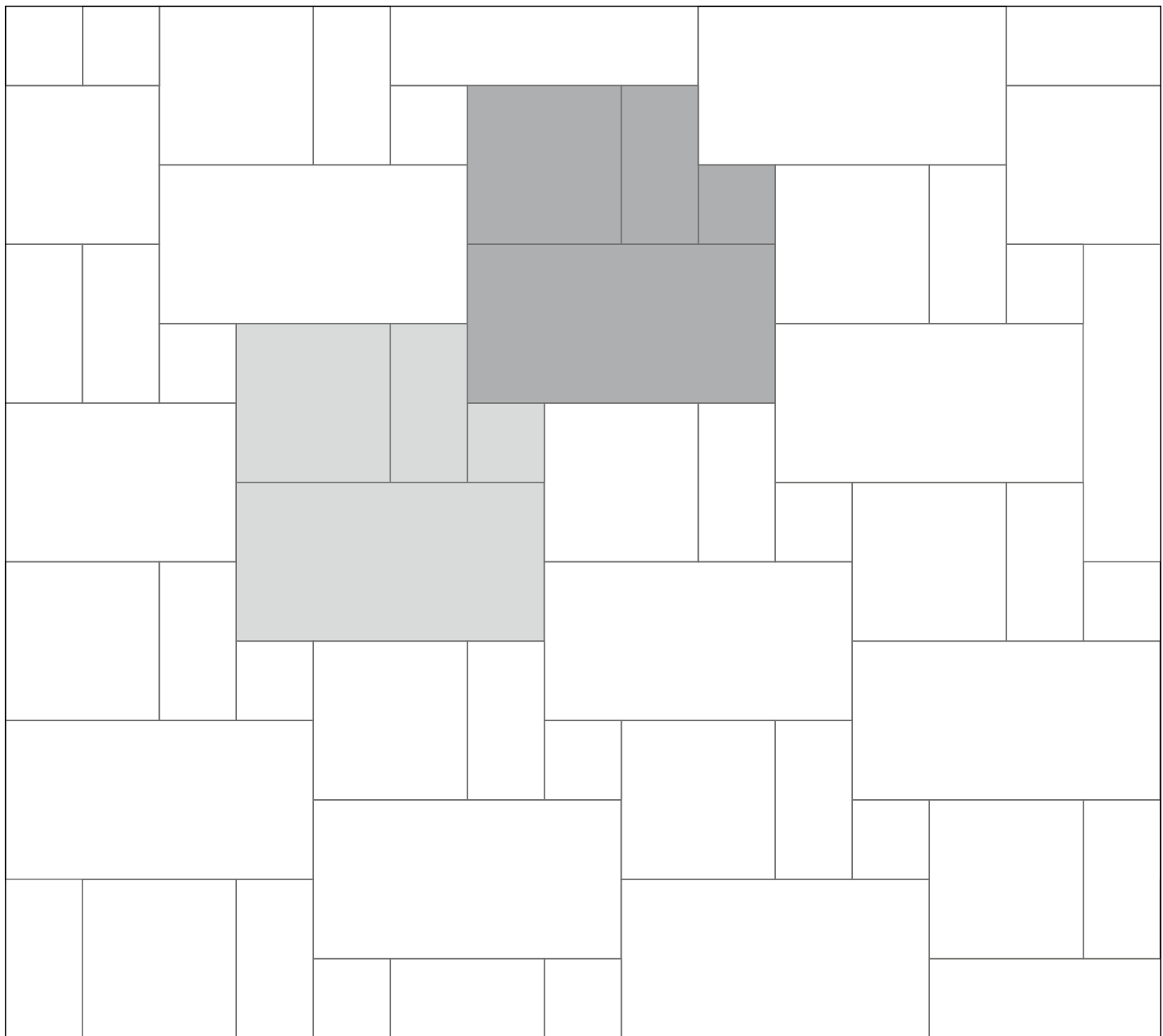
30x60 - 53% | 30x30 - 27% | 15x30 - 13% | 15x15 - 7%



30x60 - 50% | 30x30 - 25% | 15x30 - 12.5% | 15x15 - 12.5%



30x60 - 53% | 30x30 - 27% | 15x30 - 13% | 15x15 - 7%



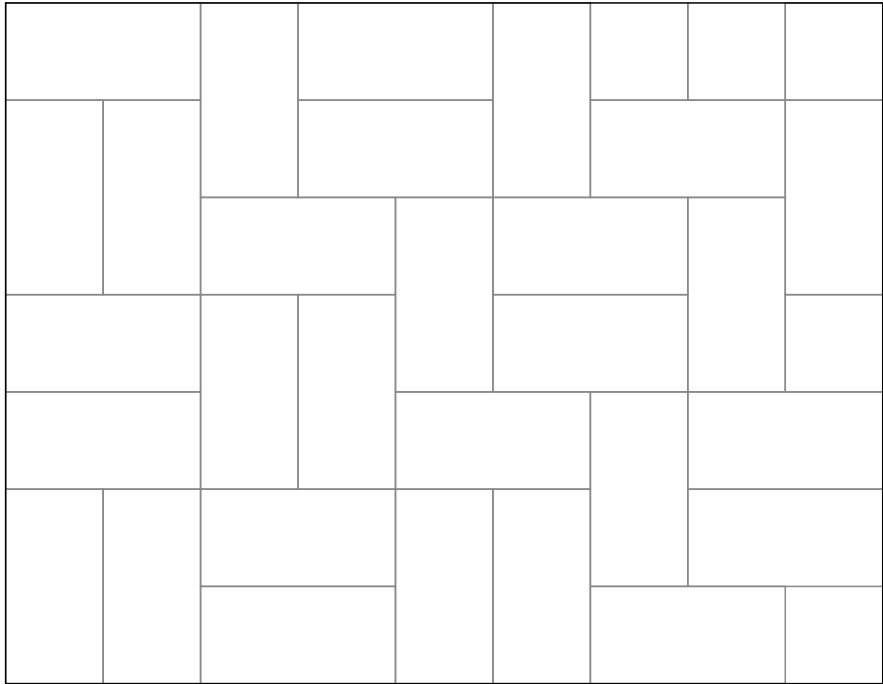
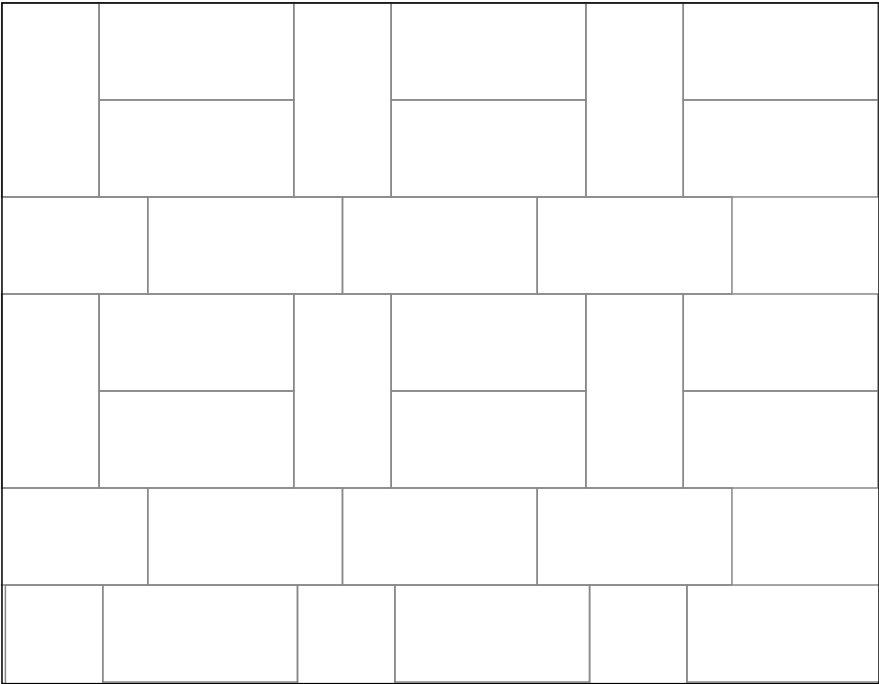
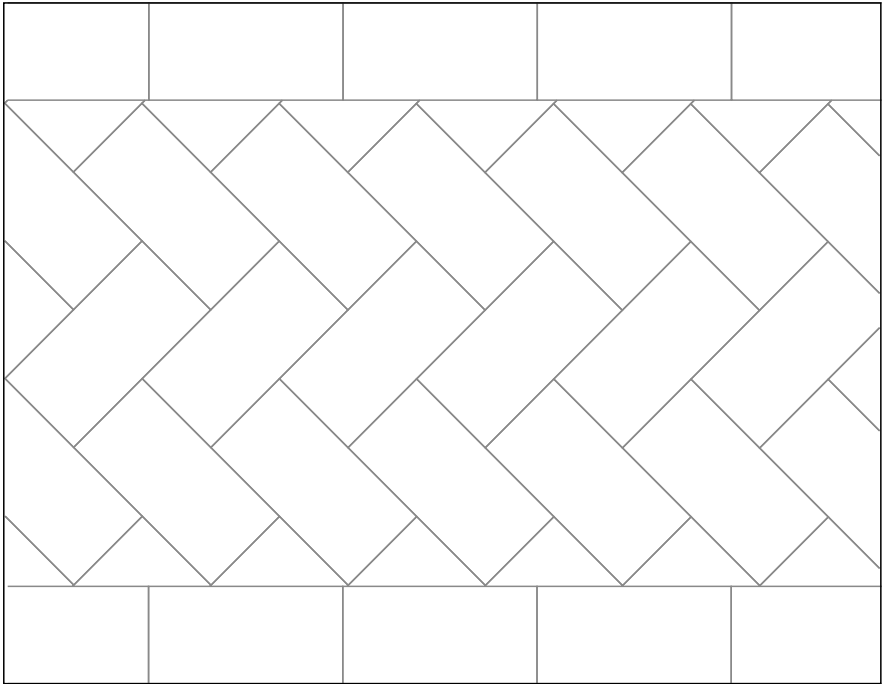
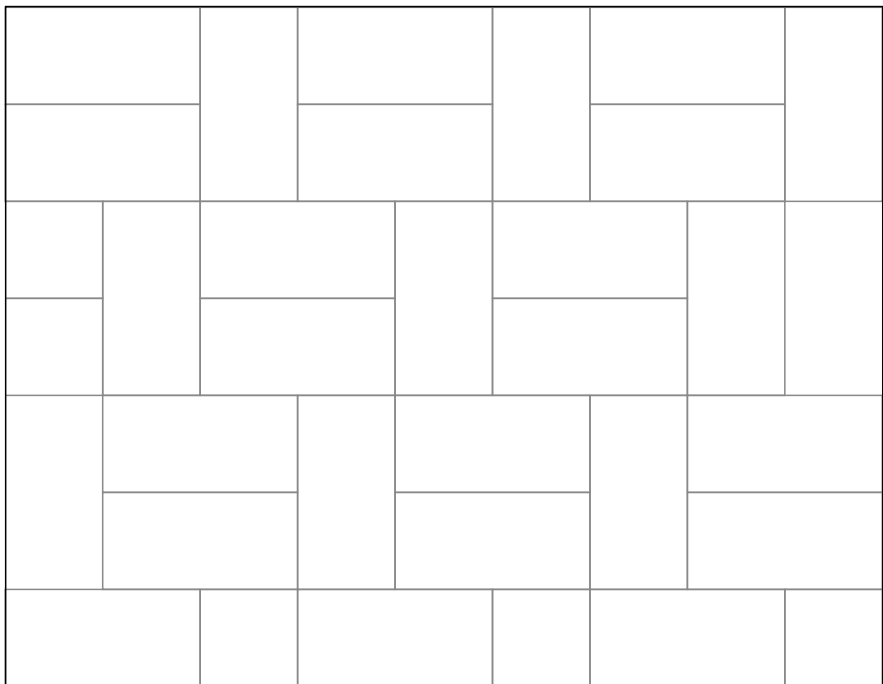
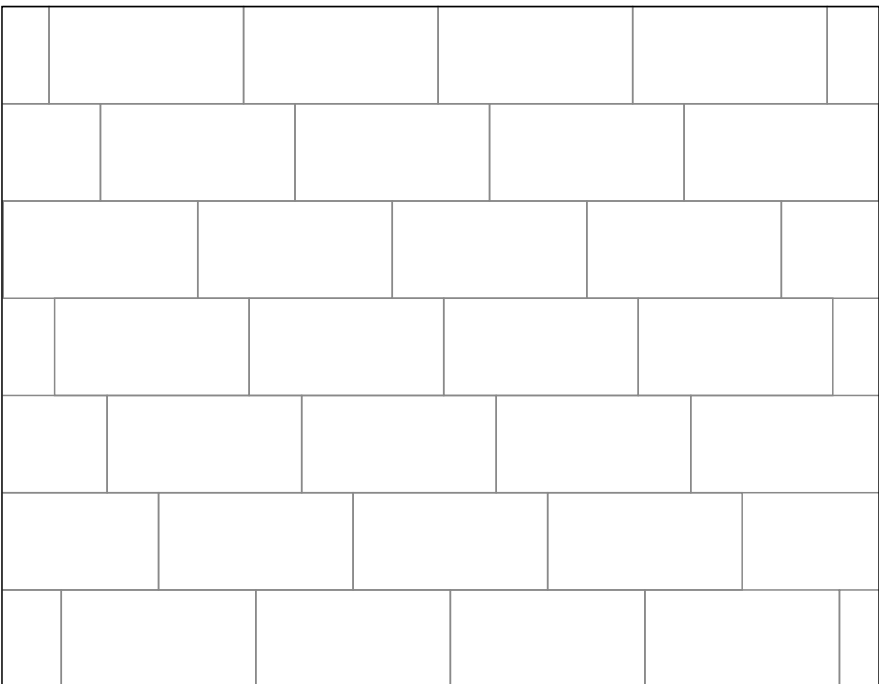
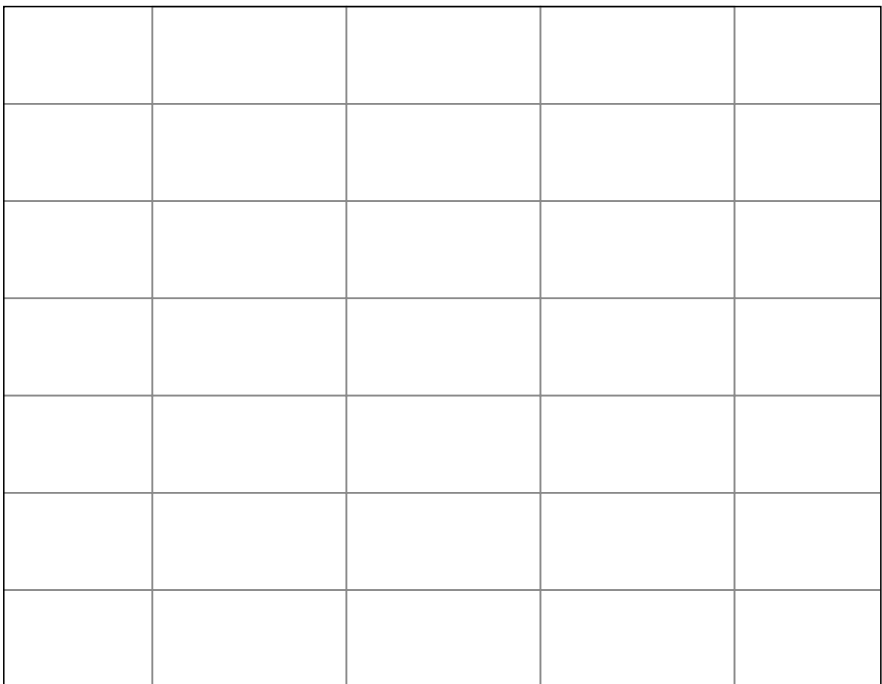
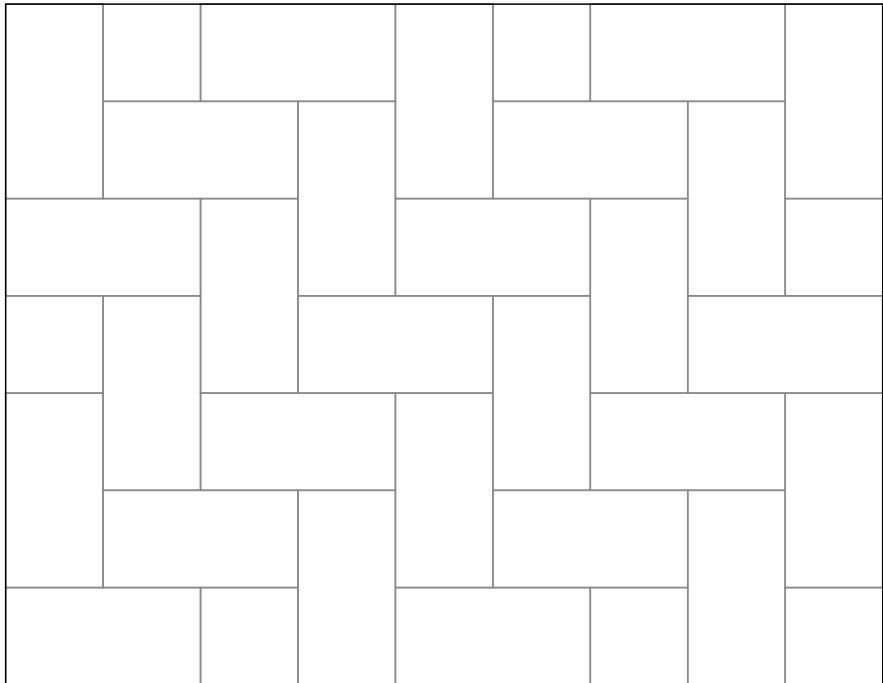
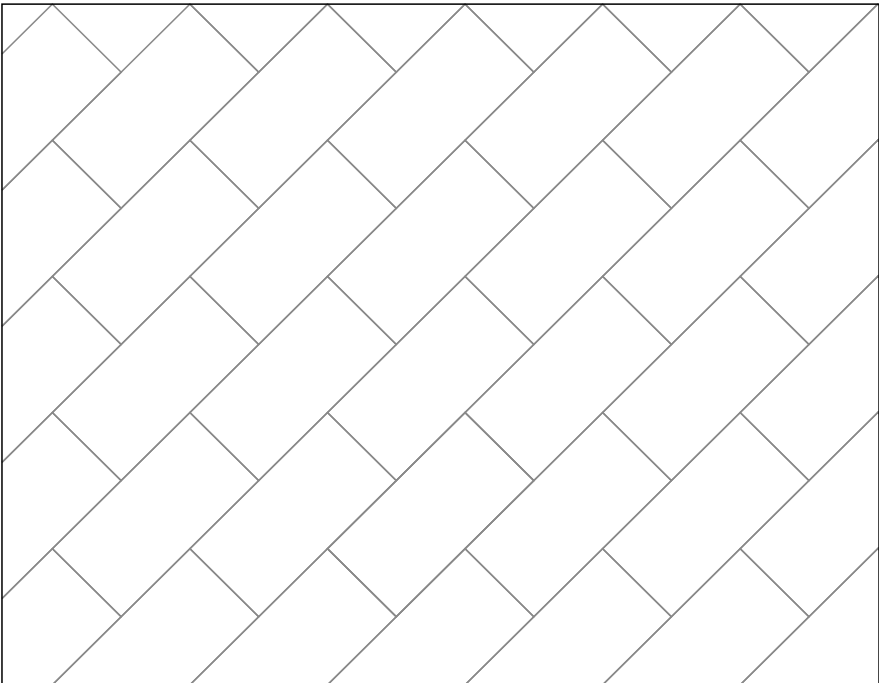
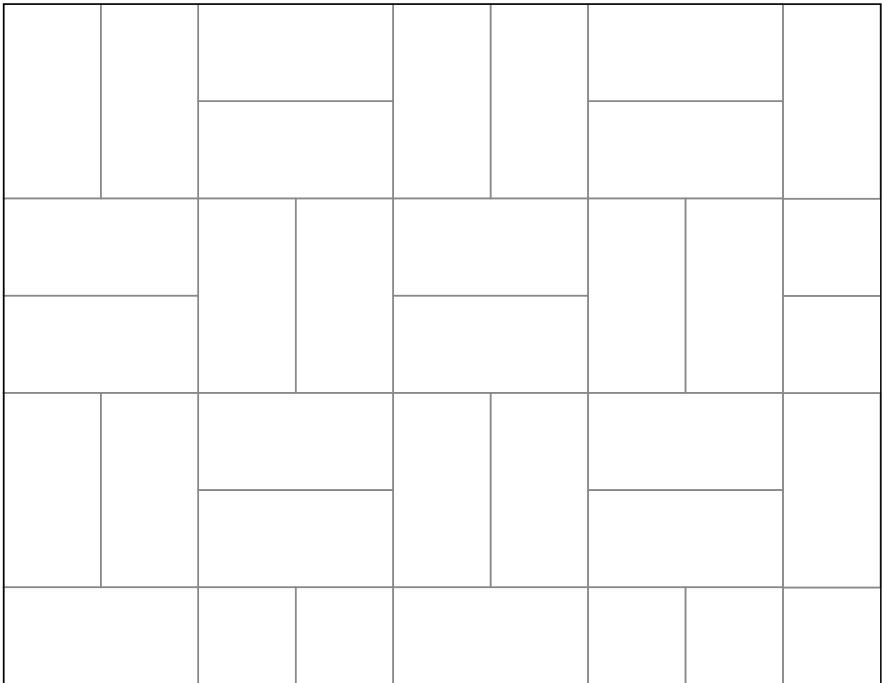
30x60 - 53% | 30x30 - 27% | 15x30 - 13% | 15x15 - 7%

 FOR PROPER INSTALLATION WE STRONGLY RECOMMEND 4MM GROUT JOINT

*Make your tile layout more interesting by switching up the pattern !
These work with a variety of sizes and colors.*

30x60 SIZE

ONE TILE, MANY STYLES



LAYING SUGGESTIONS

Before laying (of) ceramic material, you should take the following aspects into account:

- Check if the ceramic material is suitable for (use at) the selected site, according to its specifications and technical characteristics;
- Check whether there is enough material to conclude the work;
- Check the boxes to see/confirm in the boxes if the product is in the same shade, choice and caliber.
- Designers has to establish the correct way of application of the tiles depending on the structure and the foreseen utilization of the floor.

The good performance of the ceramic material depends strongly on the conditions of application for which it is extremely important to ensure the following assumptions:

01 BASE

The base must be stable, free of debris, dust and cracks. Curing times and stability of the treatments to which the support may have been subjected should be respected. You should check its flatness and stabilize it, if necessary with the help of products suitable for the purpose.

02 MATERIAL

For a better visual effect of the product, it is advisable to use alternating ceramic pieces taken from various packages simultaneously. If the product has shade variations or has different graphics and shades, it should be applied randomly.

03 JOINTS FOR TILE-LAYING

For a perfect application of the ceramic pieces, you should definitely use joints. They fulfill important aesthetic and technical functions, facilitating alignment of the materials, absorbing any possible deformation liable to be felt in the structure thus preventing the transmission of deformations to the ceramic pieces. For proper laying use of 4mm grout is essential, installation without joints is not recommendable at any technical point of view.

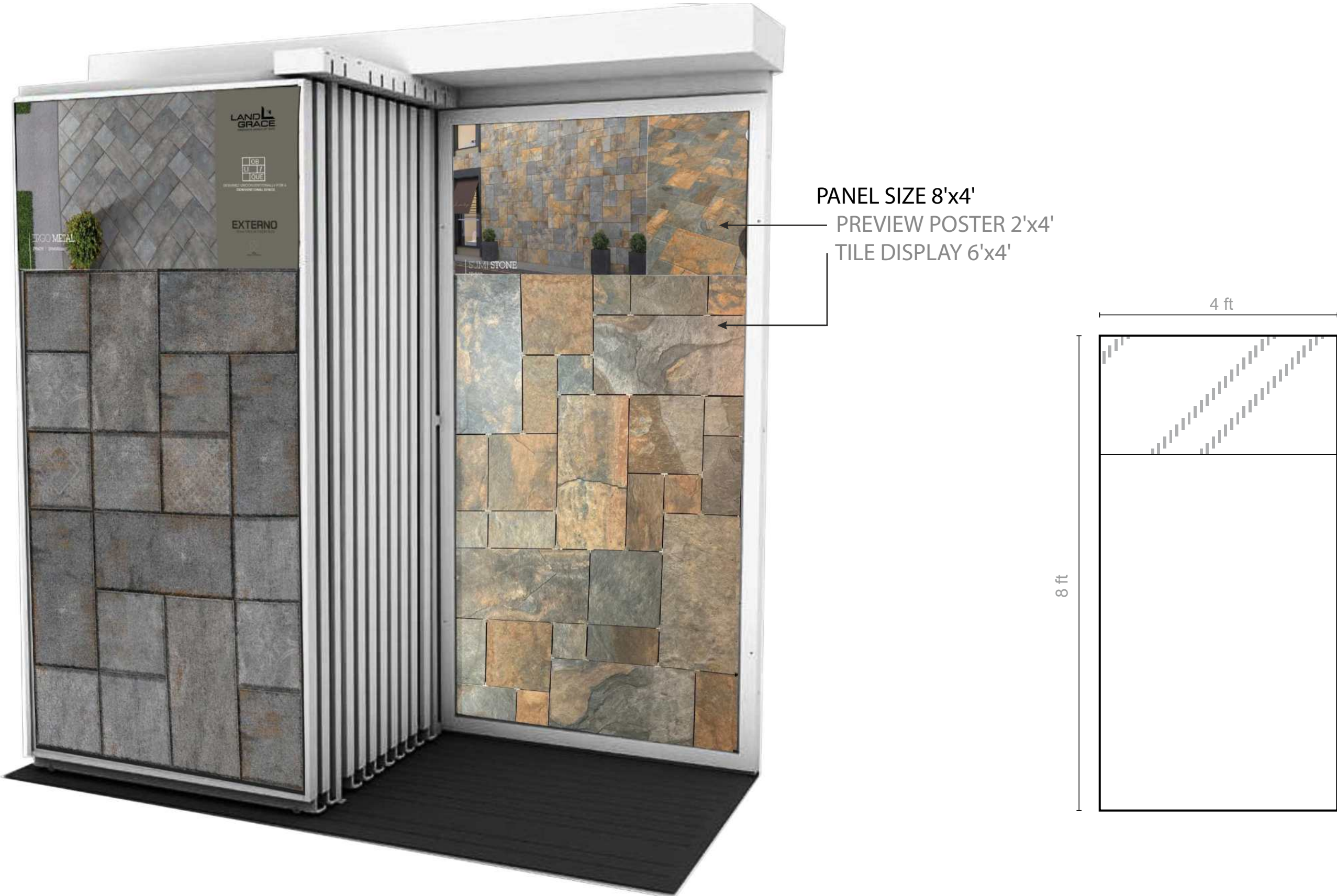
04 PACKAGING WASTE MANAGEMENT

Packaging Waste (cardboard) should be placed in locations available for recycle, namely in Eco points or adequate systems.

NOTE

All sizes are nominal. The colours and appearance features of the products are as close as possible to reality, within the limitation of this digital print.

DISPLAY PRESENTATION



TECHNICAL FEATURES		
STANDARDS UNI EN 14411 - ISO 13006 Annex G group Blb		
TILE TYPE	GLAZED PORCELAIN TILE GROUP Blb	REFERENCE STANDARD
MANUFACTURING PROCESS	SINGLE FIRING	DRY PRESSED PORCELAIN TILE
SIZES	LENGHT AND WIDTH ±0.6% max LINEARITY ±0.5% max THICKNESS ±5% max	UNI EN ISO 10545/2
WATER ABSORPTION	0.08 % < E ≤ 3%	UNI EN ISO 10545/3
BENDING STRENGTH	S ≥ 1300 N R ≥ 35 N/mm2	UNI EN ISO 10545/4
ABRASION RESISTANCE (GLAZED TILES)	PLEASE CHECK FOR EACH ITEM	UNI EN ISO 10545/7
THERMAL SHOCK	NO SAMPLE SHOW VISIBLE DEFECTS	UNI EN ISO 10545/9
FROST RESISTANCE	IT STANDS THE TEST	UNI EN ISO 10545/12
CHEMICAL RESISTANCE (ACIDS AND ALKALIS)	MINIMUM TYPE GLB	UNI EN ISO 10545/13
STAIN RESISTANCE	MINIMUM CLASS 4	UNI EN ISO 10545/14
SLIP RESISTANCE	R10	DIN 51130
SCRATCH HARDNESS OF SURFACE	8	UNI EN 101

All technical features stated in brochure are meant to be an indication of an average of figures recorded within a span in several production runs, therefore a slight discrepancy in quality figures of a certain batch in relation to these figures cannot be considered as producation failure.



SOUTHINDIATILES

159/1,159/2, Bashyakaralu Road East, R.S.Puram,
Coimbatore,Tamilnadu-641002

E-mail: info@southindiatiles.com | www.southindiatiles.com

Number :+91 7066666618